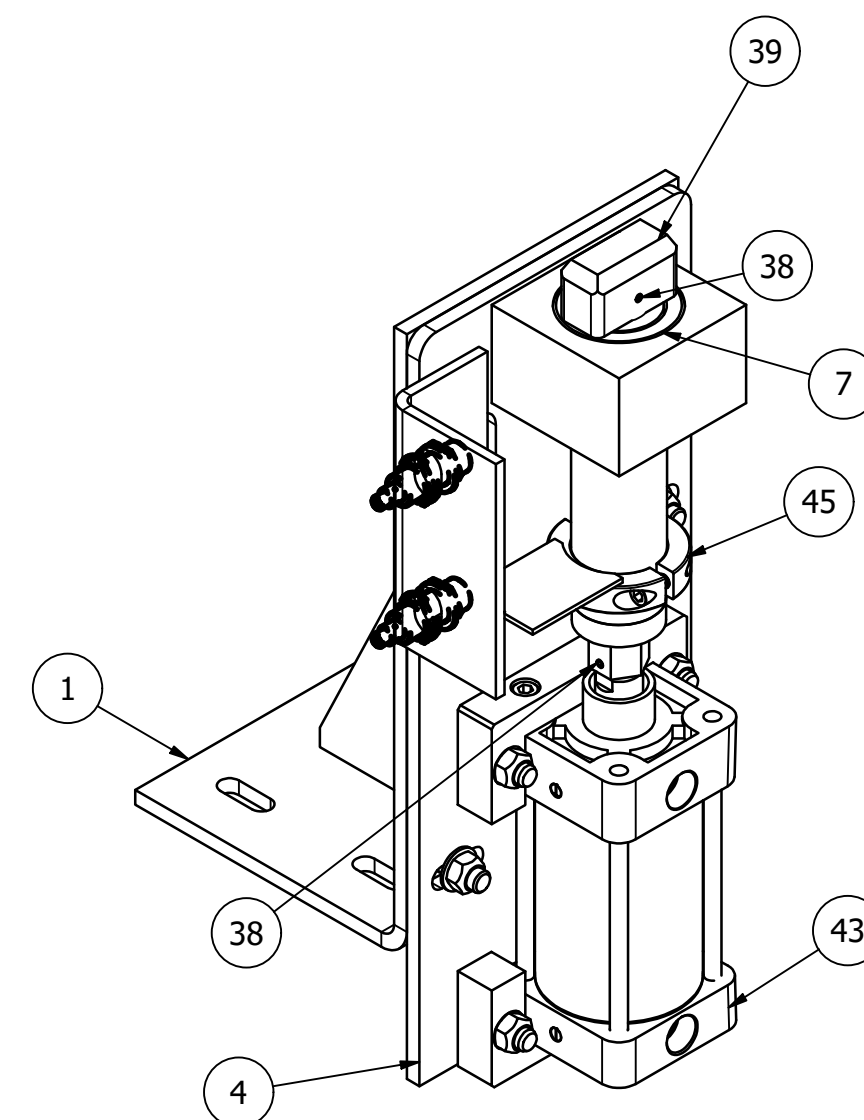
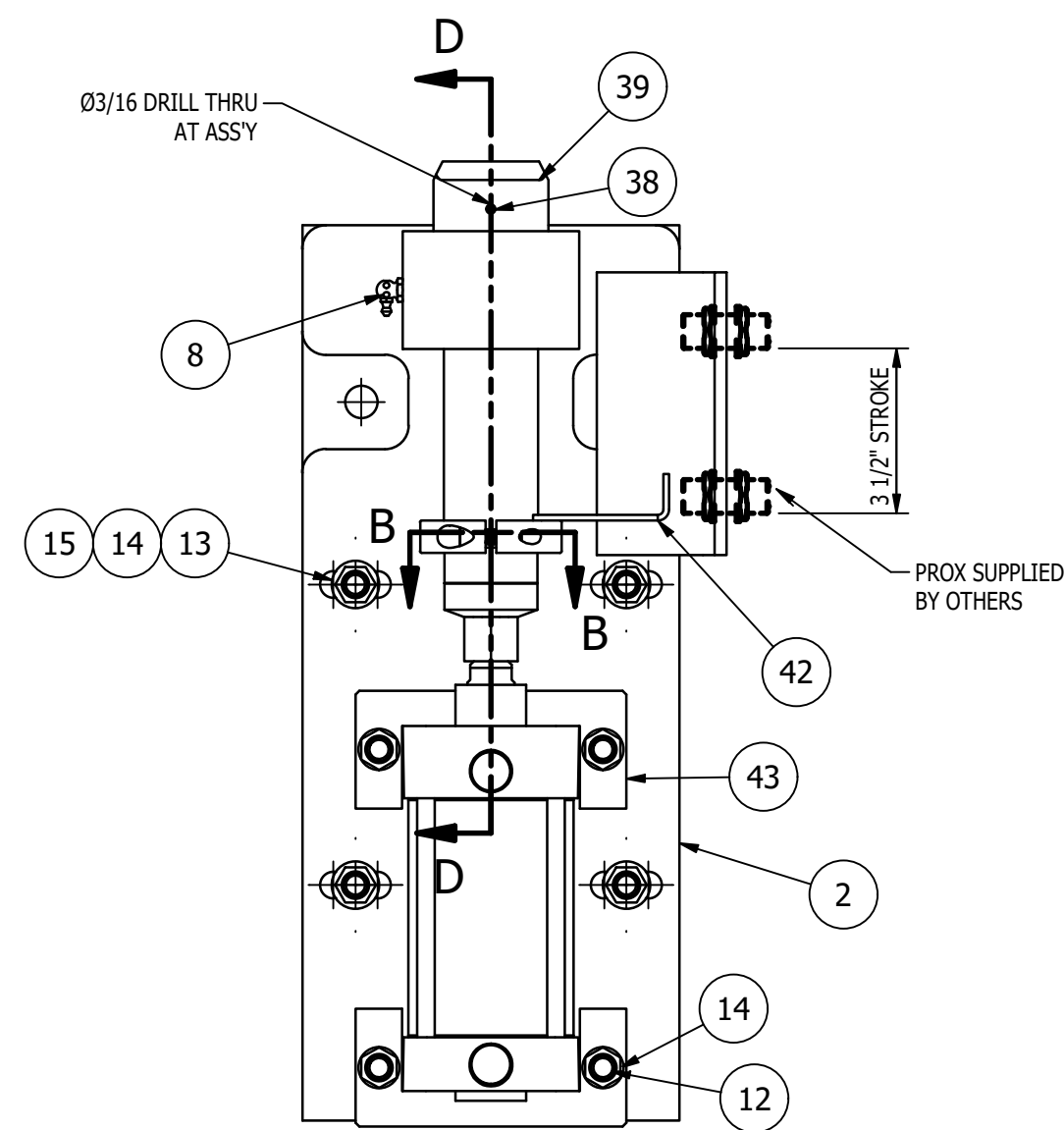


ISOVIEW OF MK-D059A  
SCALE 3"=1'-0"

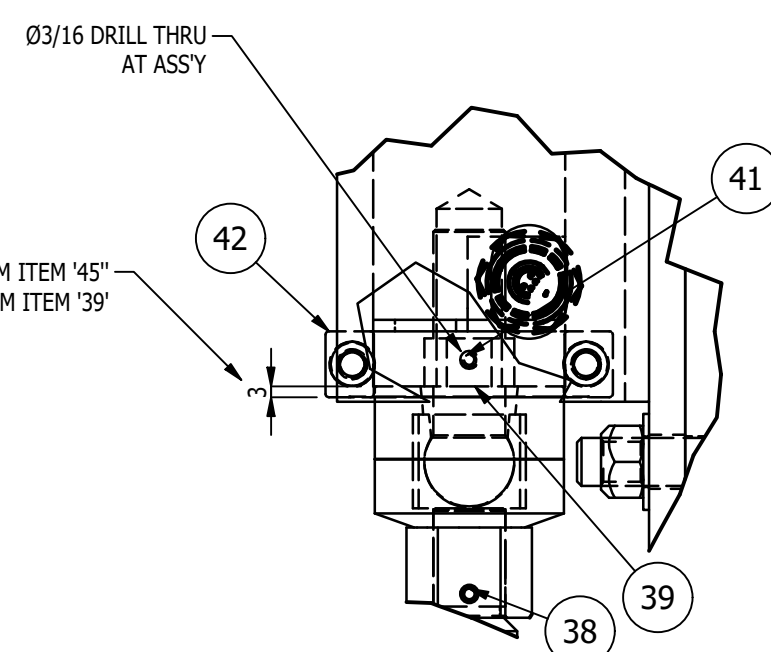
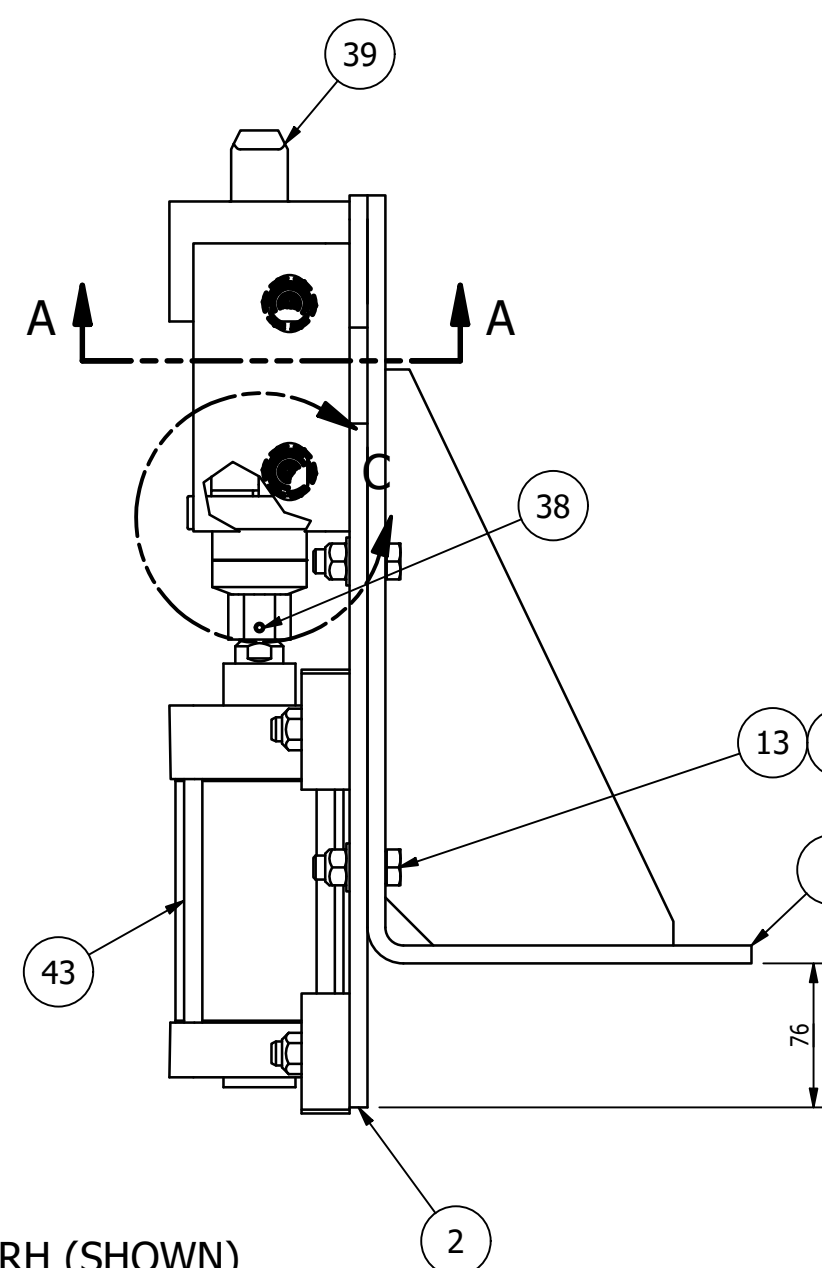


ISOVIEW OF MK-D059B  
SCALE 3"=1'-0"

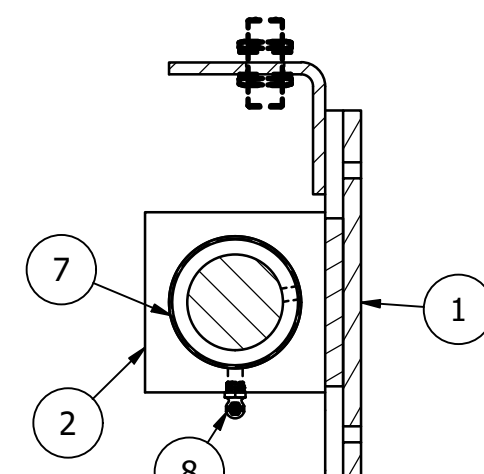


SECTION 'B-B'  
SCALE 3"=1'-0"

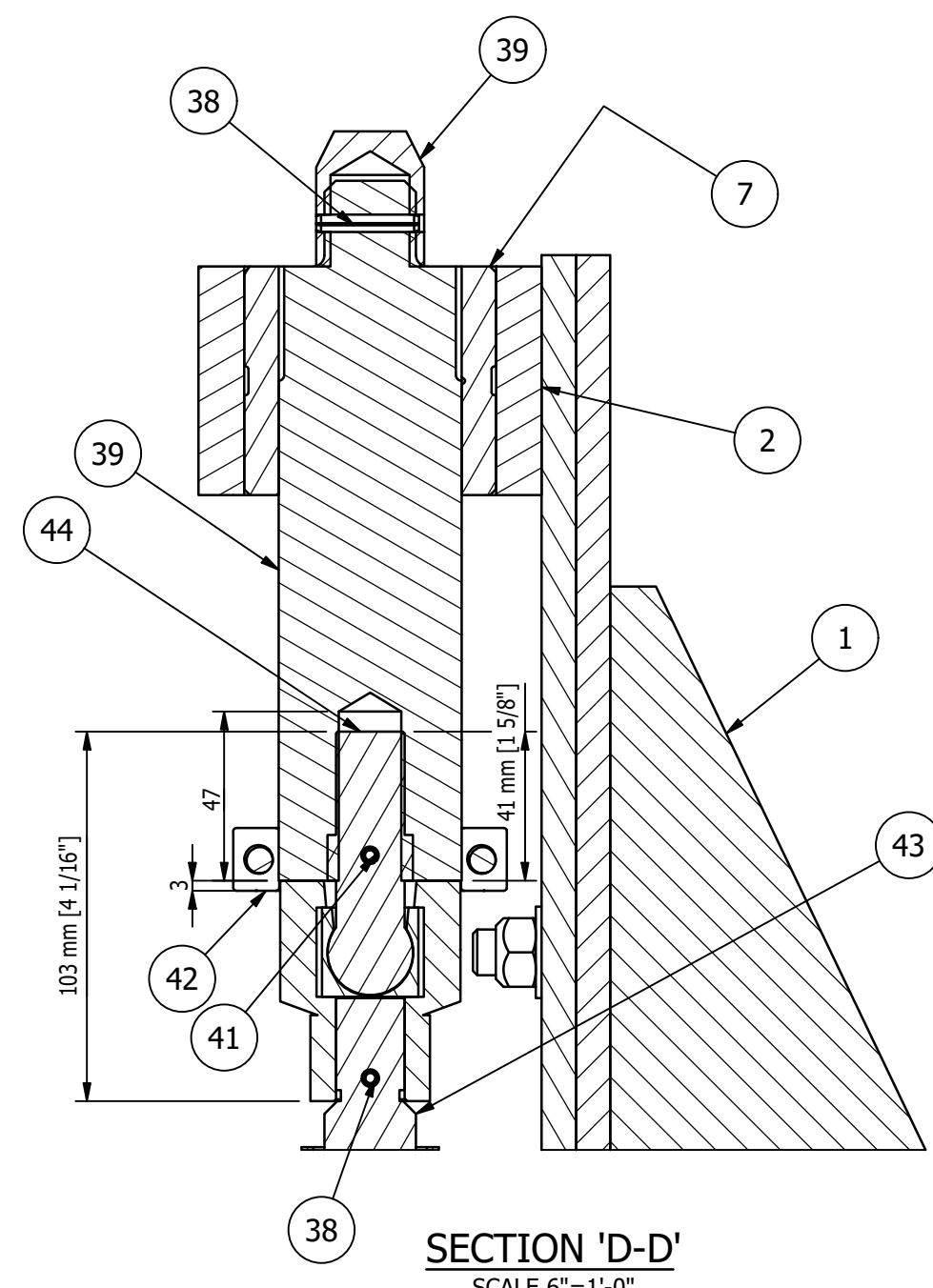
MK-D059A ~ SKID POSITIONER - RH (SHOWN)  
MK-D059B ~ SKID POSITIONER - LH (OPPOSITE)  
SCALE 3"=1'-0"



ENLARGED VIEW 'C'  
SCALE 6"=1'-0"



SECTION 'A-A'  
SCALE 3"=1'-0"



SECTION 'D-D'  
SCALE 6"=1'-0"

- SHOP NOTES:**
1. ALL MATERIAL IS TO BE FREE FROM RUST, SCALE & WELD SLAG
  2. ALL WELDS ARE TO BE CLEAN AND NEAT IN APPEARANCE
  3. REMOVE ALL EXPOSED SHARP EDGES AND BURRS
  4. ALL STEEL TO BE ASTM A-36 UNLESS OTHERWISE SPECIFIED
  5. ALL WELDS TO BE 3/16" / 5mm MINIMUM CONTINUOUS FILLET UNLESS OTHERWISE SPECIFIED.
  6. ALL HARDWARE MUST BE METRIC CLASS 8.8 OR SAE GR 5 AND ZINC PLATED
  7. MARK ASSEMBLIES AND SUB-ASSEMBLIES (WHERE APPLICABLE) WITH MK IDENTIFIERS.
  8. ALL SLOT LENGTHS ARE END TO END U.N.O.

BILL OF MATERIAL					
MARK	QTY	DESCRIPTION	LENGTH	ABM #	REMARKS
		MK-D059A			
1	1	MK-D064A ~ BRACKET WELDMENT			
2	1	MK-D064B ~ GUIDE WELDMENT - RH			
7	1	ACME DRILL JIG BUSHING 2P176-40 HEADLESS PRESS FIT TYPE "P" 2.0 ID x 2 3/4 OD x 2 1/2" LG. STYLE "P" OIL GROOVE		24-2	
8	1	ALEMITE 90 DEGREES x 1/8 NPT, 1613-B		24-3	
12	4	1/2-13UNC x 2" LG. FLAT HEX SOCKET HEAD CAP SCREW			
13	4	1/2 TYPE B NARROW FLAT WASHER			
14	8	1/2-13UNC STOVER LOCK NUT			
15	4	1/2-13UNC x 1 1/2" LG. HEX HEAD CAP SCREW			
38	2	3/16 x 1 1/8 LG. SLOTTED SPRING PIN			
39	1	MK-D065A ~ PIN ASSEMBLY			
41	1	3/16 x 2 LG. SLOTTED SPRING PIN			
42	1	MK-D065B ~ PROX TARGET ASSY			
43	1	SMC AIR CYLINDER NCA1-S325-0350, NON-LUBE, MOUNT SIDE LUG, BORE 3.25 OD, ROD 3/4-16, STROKE 3 1/2", CUSHIONED B.E., 1/2 NPTF PORTS		24-4	
44	1	SMC NJ12 FLOATING JOINT FOR 3/4-16 ROD END		24-1	
		MK-D059B			
1	1	MK-D064A ~ BRACKET WELDMENT			
4	1	MK-D064C ~ GUIDE WELDMENT - LH			
7	1	ACME DRILL JIG BUSHING 2P176-40 HEADLESS PRESS FIT TYPE "P" 2.0 ID x 2 3/4 OD x 2 1/2" LG. STYLE "P" OIL GROOVE		24-2	
8	1	ALEMITE 90 DEGREES x 1/8 NPT, 1613-B		24-3	
12	4	1/2-13UNC x 2" LG. FLAT HEX SOCKET HEAD CAP SCREW			
13	4	1/2 TYPE B NARROW FLAT WASHER			
14	8	1/2-13UNC STOVER LOCK NUT			
15	4	1/2-13UNC x 1 1/2" LG. HEX HEAD CAP SCREW			
38	2	3/16 x 1 1/8 LG. SLOTTED SPRING PIN			
39	1	MK-D065A ~ PIN ASSEMBLY			
41	1	3/16 x 2 LG. SLOTTED SPRING PIN			
43	1	SMC AIR CYLINDER NCA1-S325-0350, NON-LUBE, MOUNT SIDE LUG, BORE 3.25 OD, ROD 3/4-16, STROKE 3 1/2", CUSHIONED B.E., 1/2 NPTF PORTS		24-4	
44	1	SMC NJ12 FLOATING JOINT FOR 3/4-16 ROD END		24-1	
45	1	MK-D065C ~ PROX TARGET ASSY (LH)			

REV	BY	DATE	DESCRIPTION	APP
C	MC	11/28/22	CHANGED ITEMS 43, 44 FROM PARKER TO SMC, REV GEOMETRY ITEM 39, REV. LENGTH ITEM 38, ADDED SECTION D-D, RENUMBER ITEMS IN BOM	
B	MC	11/2/2022	REV PART NUMBER ITEM 9	
A	MC	10/25/22	FOR FABRICATION	

**REVISION HISTORY**

**MILLER INDUSTRIES**  
3070 W. THOMPSON RD.  
FENTON, MI 48430  
PH: 810.373.0322 FAX: 810.373.0326  
www.millc.com

**TITLE:** P6700 CONVEYORS CAMPUS BUILDING  
**CLIENT:** VOLVO  
**DRAWING No.:** 1875D059  
**REV:** C

**DRAWN BY:** RJB  
**CHECKED BY:** CW  
**DWG DATE:** 9/23/22  
**JOB No.:** 22096

**MAGNUM Consulting**  
4110 Clarkwood Rd.  
Suite 125  
West, MI 48375  
Phone: (248) 772-8822  
Fax: (248) 772-8851  
Web: www.mmagnum.com

MAGNUM JOB #: 1875  
MAGNUM DRAWING #: 1875D059 - REV C

UNLESS OTHERWISE NOTED:  
X = ±.060  
XX = ±.030  
XXX = ±.005  
FRACTIONS = ±1/16"  
ANGLES = ±1°30'  
BREAK ALL SHARP EDGES  
DEBURR ALL HOLES  
DO NOT SCALE DRAWING

**GENERAL NOTES:**

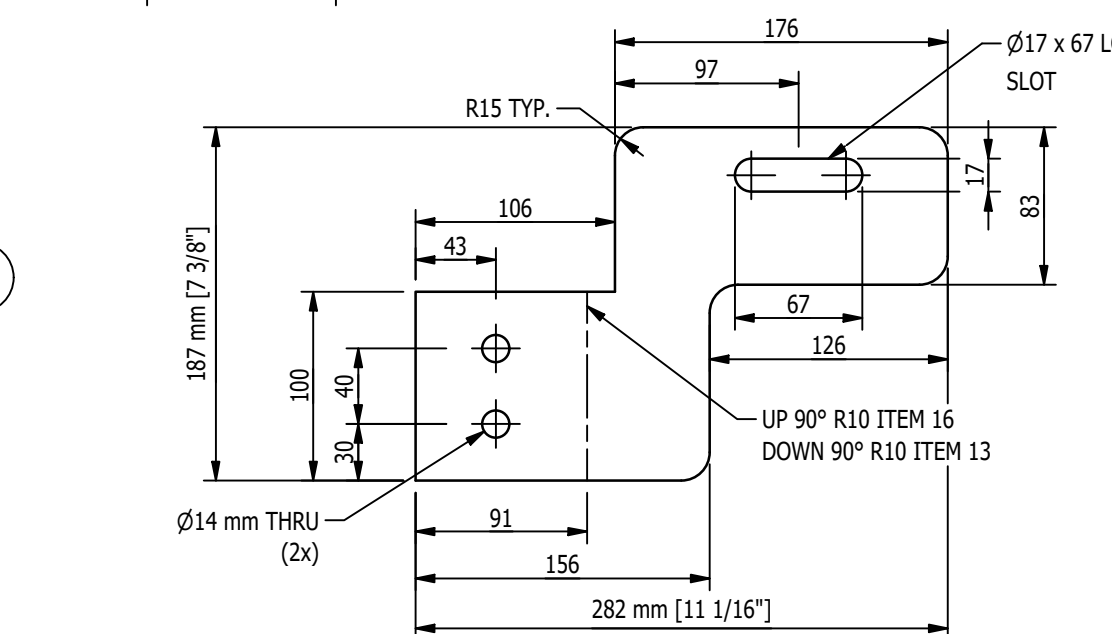
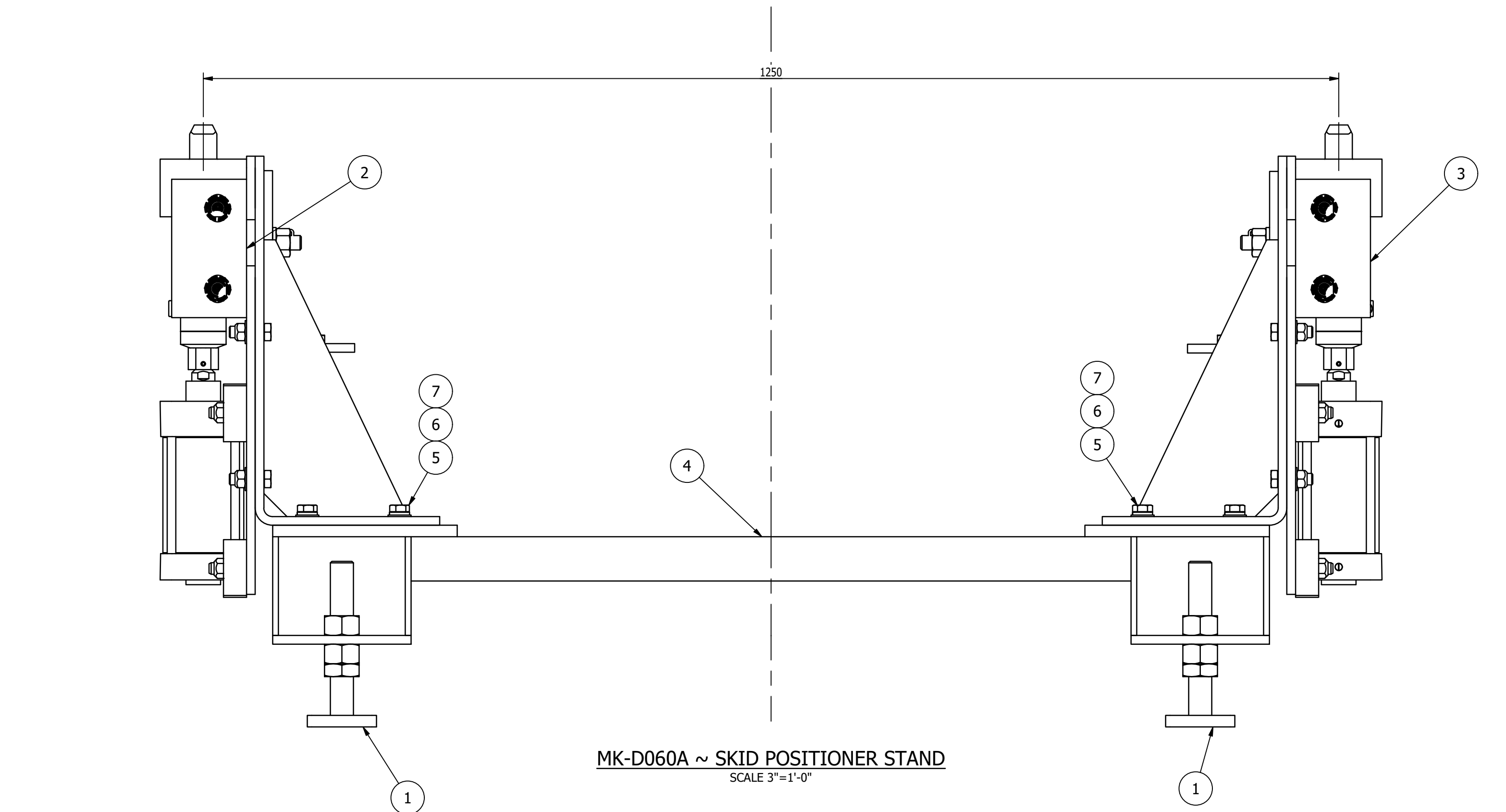
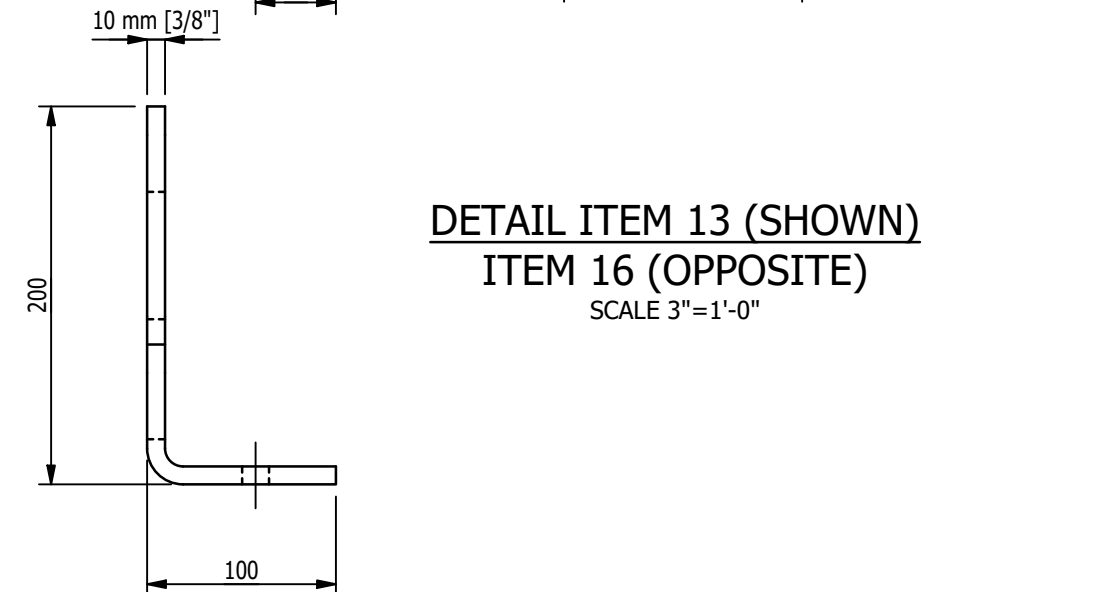
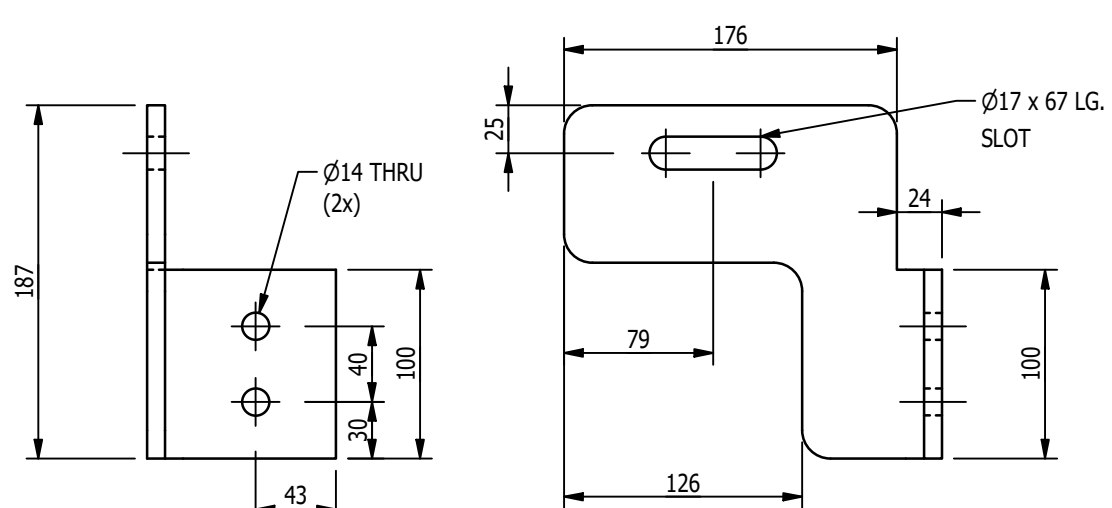
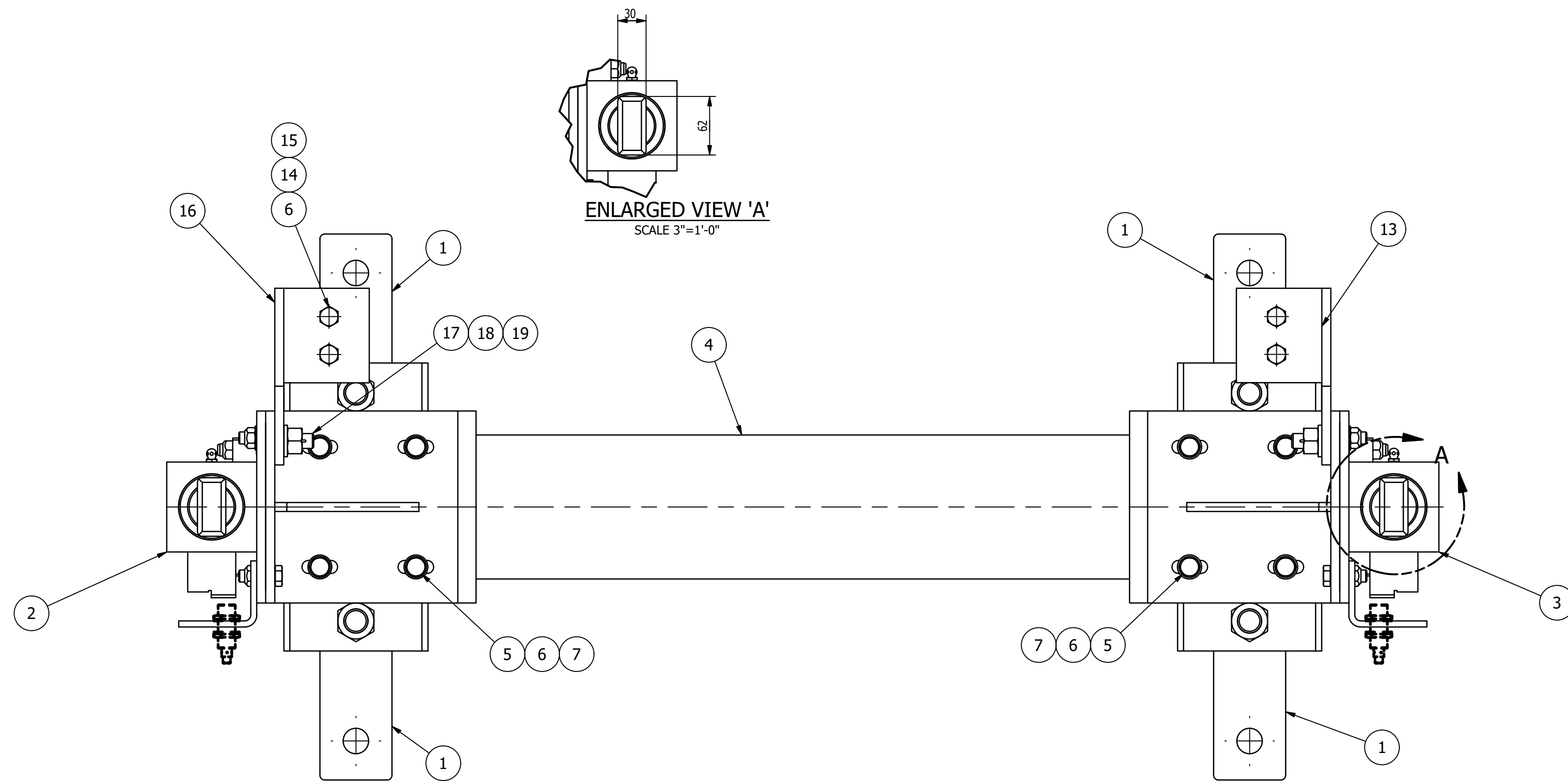
**MATERIALS:**  
- ALL WIDE FLG. MATERIAL TO BE ASTM A992-GR50 U.N.O.  
- ALL TUBE MATERIAL TO BE ASTM A500, GRADE B U.N.O.  
- ALL PIPE MATERIAL TO BE ASTM A53, GRADE B U.N.O.  
- ALL OTHER MATERIAL TO BE ASTM-A36 U.N.O.

**HOLES:**  
- ALL HOLES ARE 13/16" DIA. U.N.O.  
- ALL BOLTED CONNECTIONS TO BE 3/4" DIA. A325-N (SHEAR BEARING TYPE CONNECTIONS) WITH BOLTS INSTALLED IN SNUG TIGHT CONDITION, UNLESS NOTED.

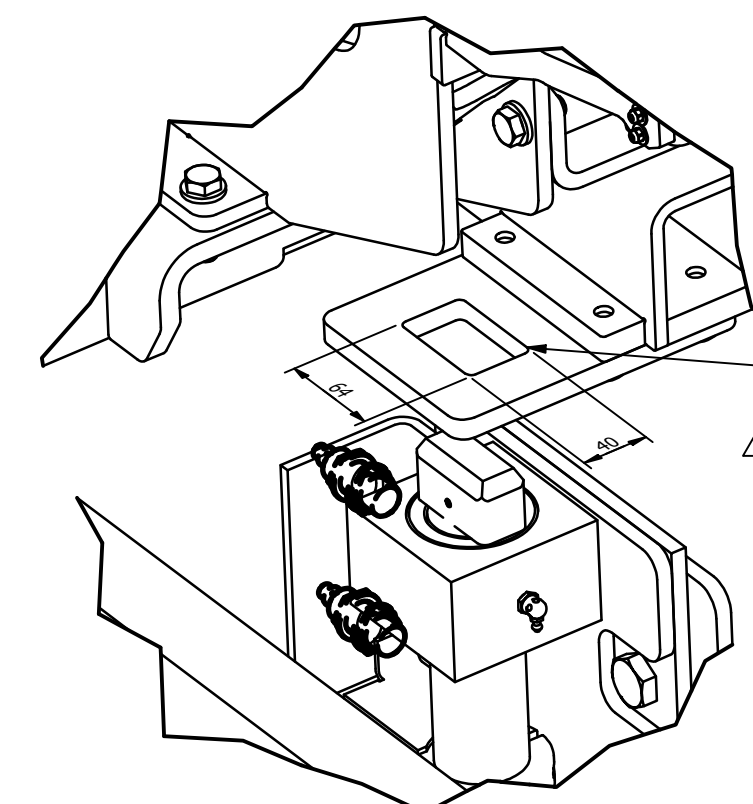
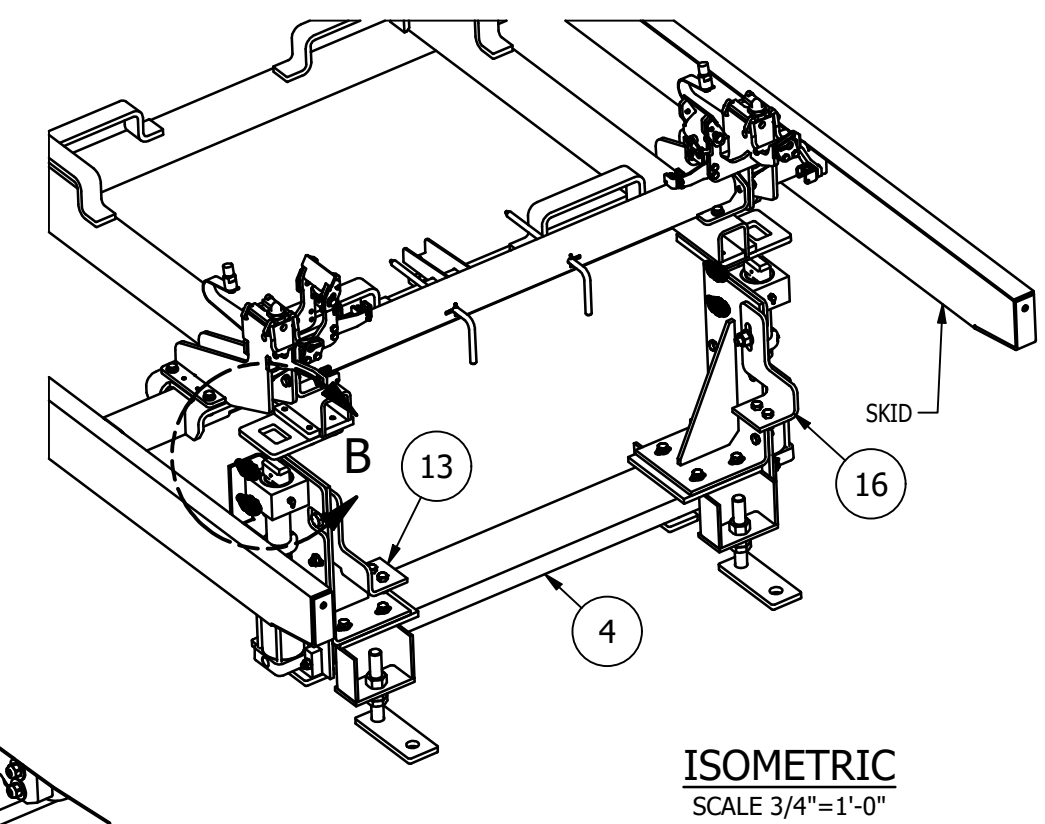
**WELDS:**  
- ALL WELDS TO BE "E70XX", (PER AWS D1.1)  
- PAINT PER CUSTOMER SPECIFICATIONS U.N.O.

**COPIES:**  
- ALL REentrant CUTS TO BE A MIN 1/2" RADIUS U.N.O.





BILL OF MATERIAL					
MARK	QTY	DESCRIPTION	LENGTH	ABM #	REMARKS
		MK-D060A			
1	4	MK-D007A ~ ADJUSTING SUPPORT			
2	1	MK-D059A ~ SKID POSITIONER - RH			
3	1	MK-D059B ~ SKID POSITIONER - LH			
4	1	MK-D063A ~ SKID POSITIONER STAND WELDMENT			
5	8	1/2 SPRING LOCK WASHER			
6	12	1/2 TYPE B NARROW FLAT WASHER			
7	8	1/2-13UNC x 1" LG. HEX HEAD CAP SCREW			
13	1	SHT 3/8 x 7 3/8	11 1/16"		
14	4	1/2-13UNC HEX NUT			
15	4	1/2-13UNC x 1 1/4" LG. HEX HEAD BOLT			
16	1	SHT 3/8 x 7 3/8	11 1/16"		
17	2	5/8-11UNC ANCO LOCK NUT A194 GR. 2H			
18	2	5/8 FLAT HARDENED WASHER F436			
19	2	5/8-11UNC x 2" LG. A325 HEX HEAD BOLT			



NOTE: THERE IS A NOMINAL 2mm CLEARANCE IN FRONT AND BACK AND 5mm CLEARANCE ON EACH SIDE BETWEEN THE PIN AND THE SLOT

- SHOP NOTES:**
1. ALL MATERIAL IS TO BE FREE FROM RUST, SCALE & WELD SLAG
  2. ALL WELDS ARE TO BE CLEAN AND NEAT IN APPEARANCE
  3. REMOVE ALL EXPOSED SHARP EDGES AND BURRS
  4. ALL STEEL TO BE ASTM A-36 UNLESS OTHERWISE SPECIFIED
  5. ALL WELDS TO BE 3/16" / 5mm MINIMUM CONTINUOUS FILLET UNLESS OTHERWISE SPECIFIED.
  6. ALL HARDWARE MUST BE METRIC CLASS 8.8 OR SAE GR 5 AND ZINC PLATED
  7. MARK ASSEMBLIES AND SUB-ASSEMBLIES (WHERE APPLICABLE) WITH MK IDENTIFIERS.
  8. ALL SLOT LENGTHS ARE END TO END U.N.O.

**PAINT NOTES:**  
 PAINT ALL FABRICATED STEEL  
 ONE SHOP COAT OF LIGHT GREY RAL 7035  
 DO NOT PAINT MACHINED ITEMS, FASTENERS  
 OF PURCHASED ITEMS.

REV	BY	DATE	DESCRIPTION	APP
B	MC	11/28/22	CHANGED CLEARANCE FOR POSITIONER PIN IN SKID	
A	MC	10/25/22	FOR FABRICATION	

**REVISION HISTORY**

**MILLER INDUSTRIES**  
 3070 W. THOMPSON RD.  
 FENTON, MI 48430  
 PH: 810.373.0322 FAX: 810.373.0326  
 www.millc.com

TITLE:	P6700 CONVEYORS CAMPUS BUILDING	DRAWN BY:	RJB
CLIENT:	VOLVO	CHECKED BY:	CW
DRAWING No.	1875D060	DWG DATE:	9/26/22
REV:	B	JOB No:	22096

**MAGNUM CONSULTING**  
 41100 QuakerRoad Rd.  
 Suite 125  
 Novi, MI 48235  
 Phone: (248) 772-8800  
 Fax: (248) 772-8801  
 Web: www.mmagnum.com

UNLESS OTHERWISE NOTED:  
 X = ±.060  
 XX = ±.030  
 XXX = ±.005  
 FRACTIONS = ±1/16"  
 ANGLES = ±1°30'  
 BREAK ALL SHARP EDGES  
 DEBURR ALL HOLES  
 DO NOT SCALE DRAWING

**GENERAL NOTES:**

**MATERIALS:**

- ALL WIDE FLG. MATERIAL TO BE ASTM A892-GR50 U.N.O.
- ALL TUBE MATERIAL TO BE ASTM A500, GRADE B U.N.O.
- ALL PIPE MATERIAL TO BE ASTM A53, GRADE B U.N.O.
- ALL OTHER MATERIAL TO BE ASTM-A36 U.N.O.

**HOLES:**

- ALL HOLES ARE 13/16" DIA. U.N.O.
- ALL BOLTED CONNECTIONS TO BE 3/4" DIA. A325-N (SHEAR BEARING TYPE CONNECTIONS) WITH BOLTS INSTALLED IN SNUG TIGHT CONDITION, UNLESS NOTED.

**WELDS:**

- ALL WELDS TO BE "E70XX"; (PER AWS D1.1)

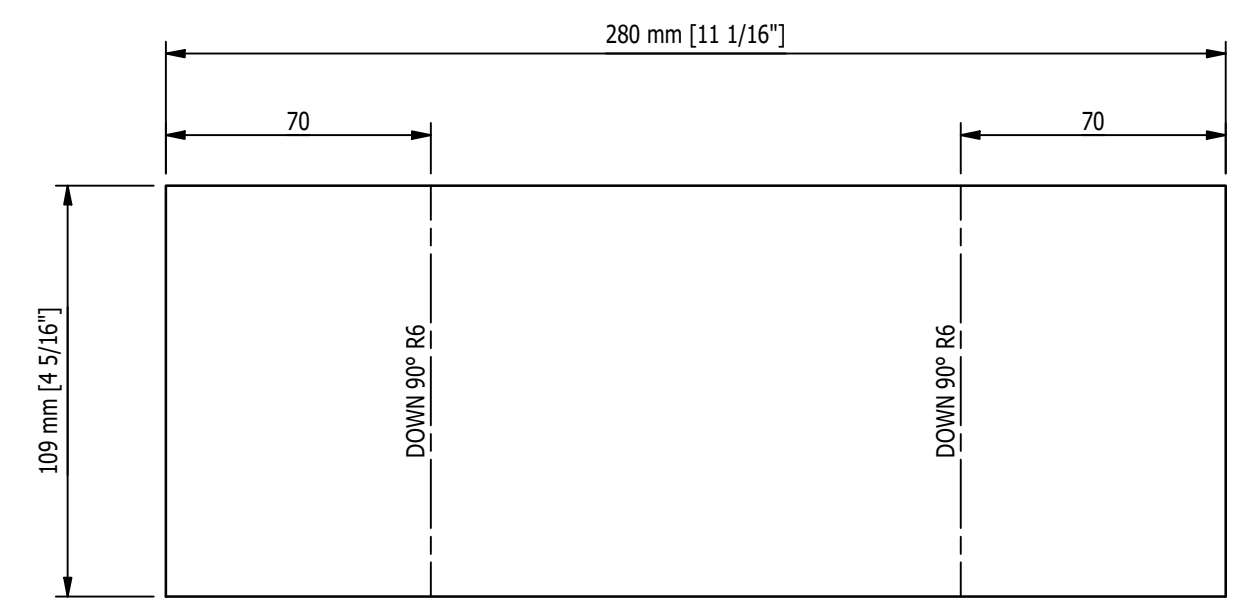
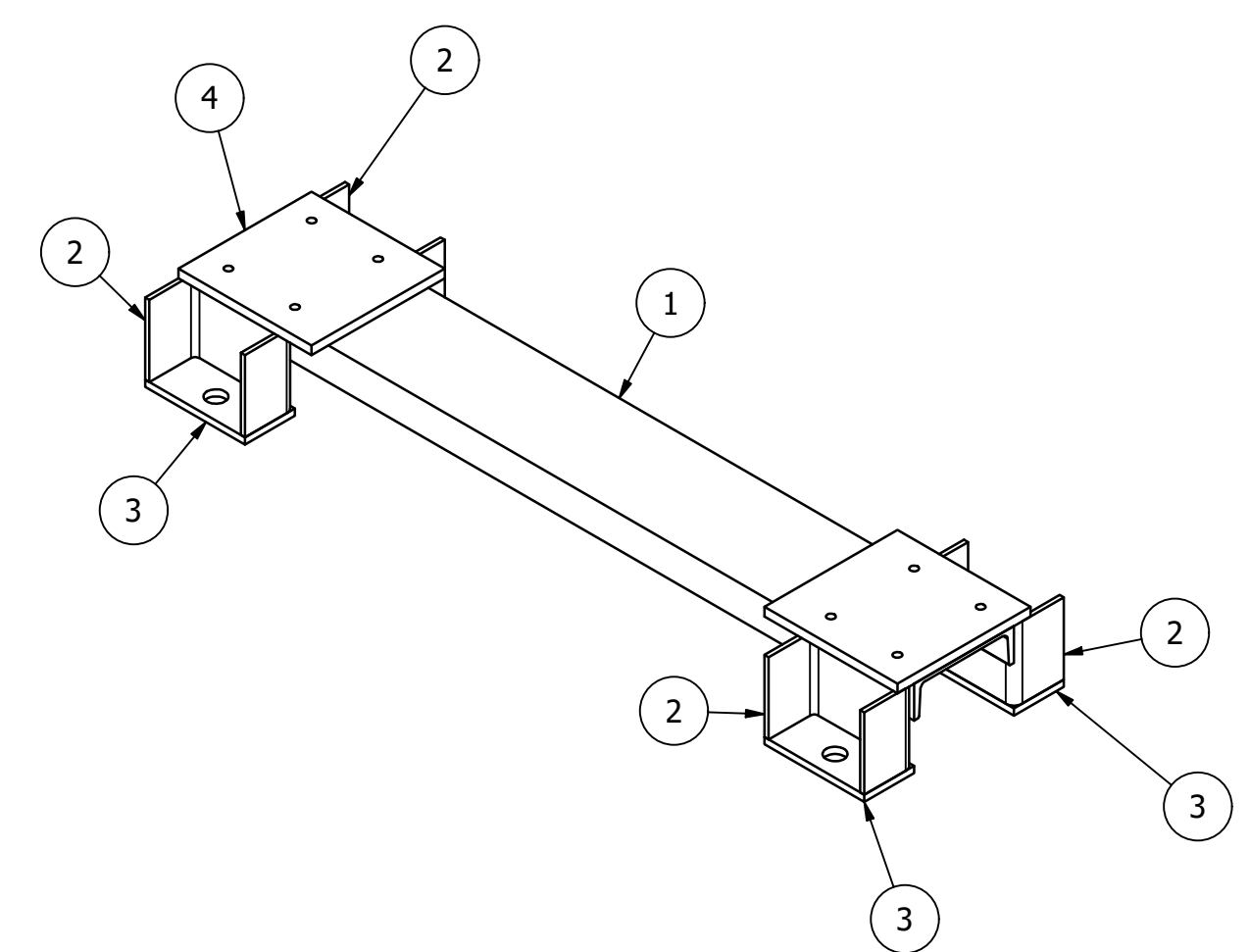
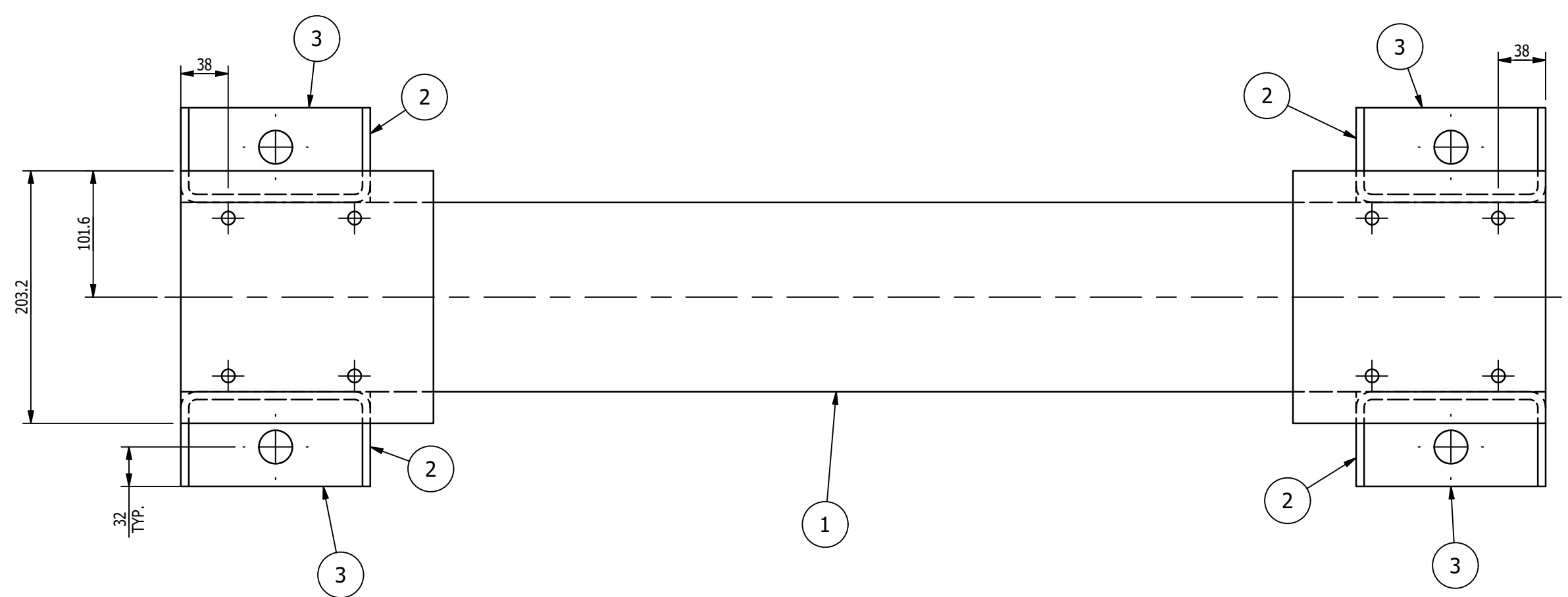
**PAINT:**

- PAINT PER CUSTOMER SPECIFICATIONS U.N.O.

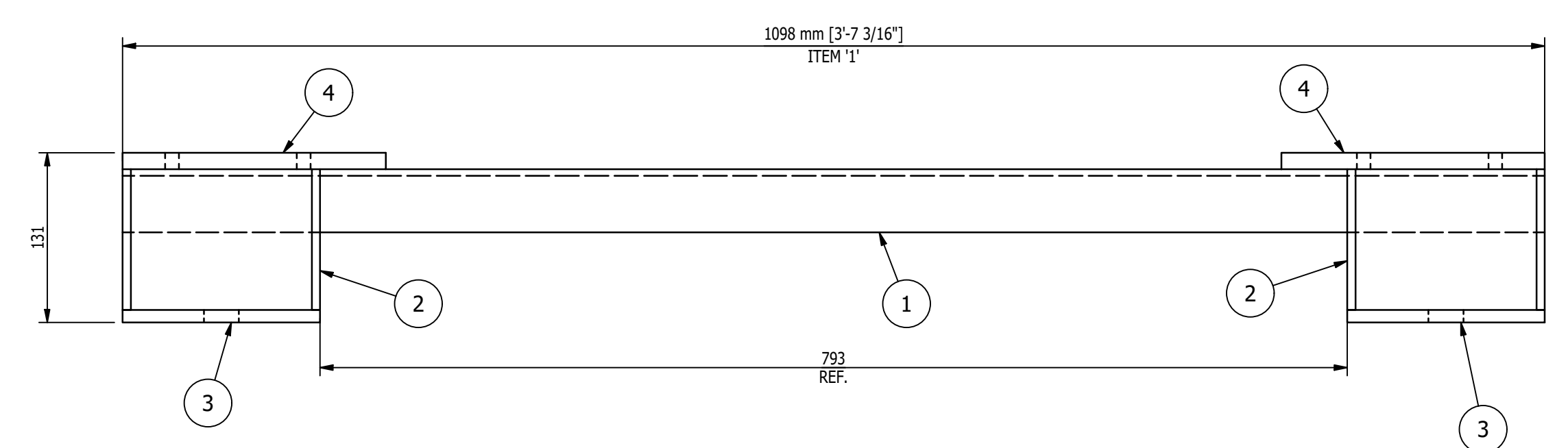
**COPIES:**

- ALL REentrant CUTS TO BE A MIN 1/2" RADIUS U.N.O.

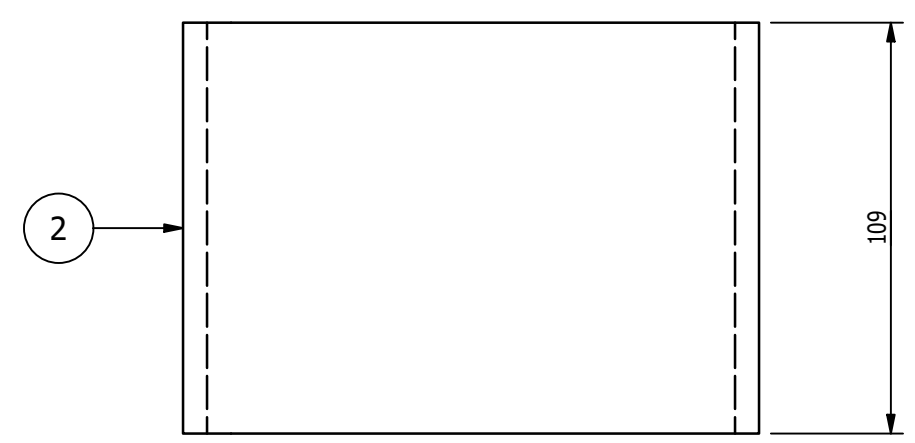
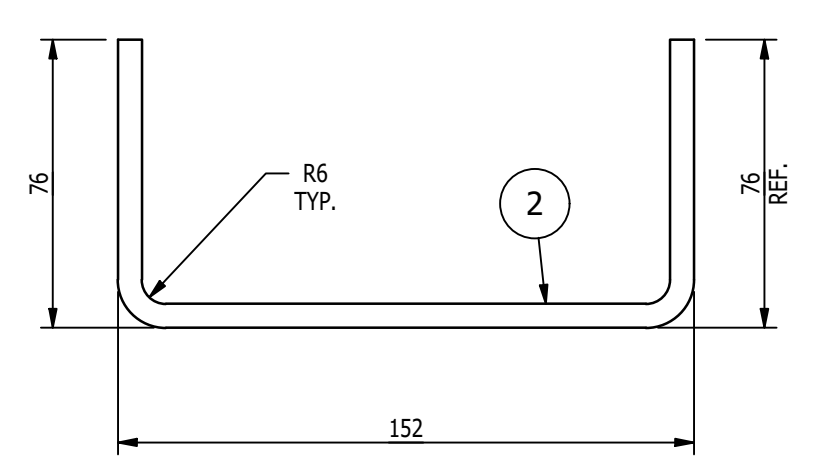
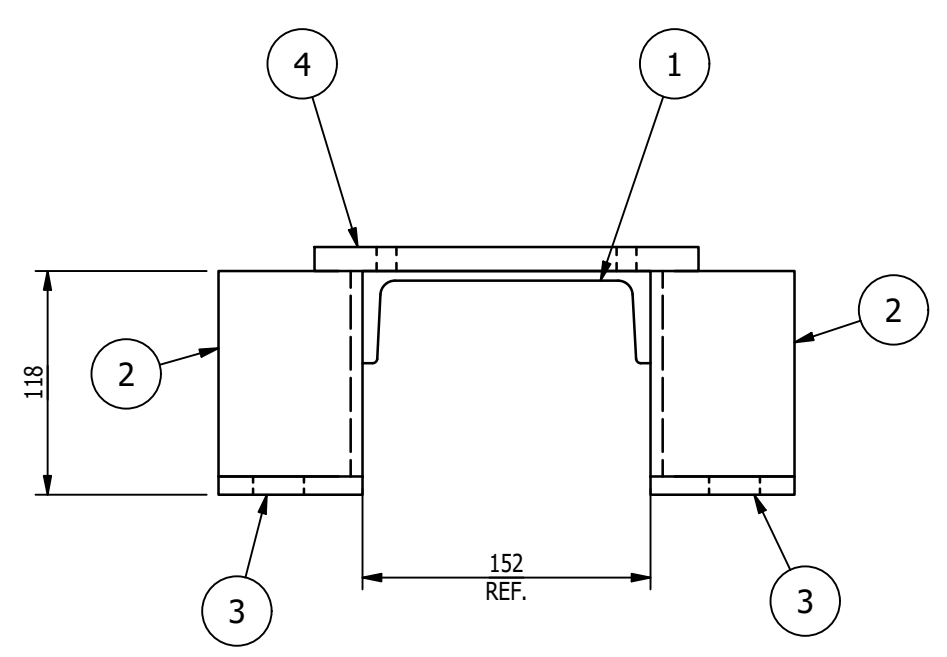
BILL OF MATERIAL					
MARK	QTY	DESCRIPTION	LENGTH	ABM #	REMARKS
		MK-D063A			
1	1	C 6 x 8.2	3'-7 3/16"		
2	4	PL 1/4 x 4 5/16	11 1/16"		
3	4	BAR 3/8 x 3	6"		
4	2	BAR 1/2 x 8	8"		



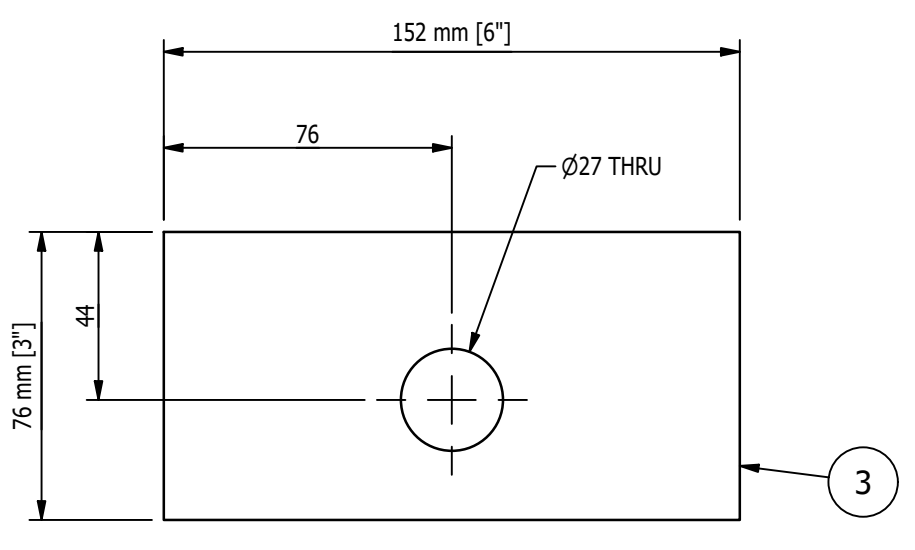
FLAT PATTERN OF ITEM '2'  
SCALE 6"=1'-0"



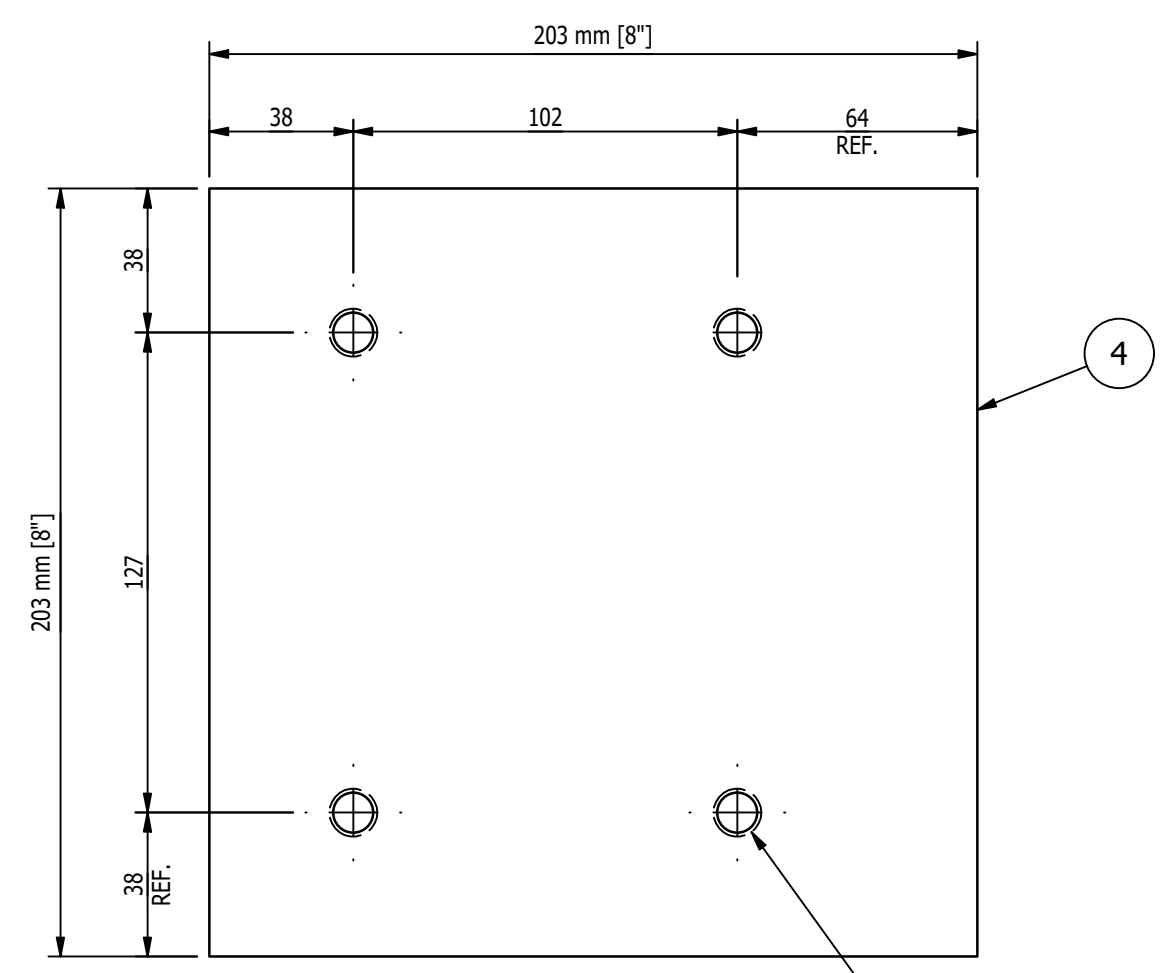
MK-D063A ~ SKID POSITIONER STAND WELDMENT  
SCALE 3"=1'-0"



DETAIL OF ITEM '2'  
SCALE 6"=1'-0"



DETAIL OF ITEM '3'  
SCALE 6"=1'-0"



DETAIL OF ITEM '4'  
SCALE 6"=1'-0"

- SHOP NOTES:**
1. ALL MATERIAL IS TO BE FREE FROM RUST, SCALE & WELD SLAG
  2. ALL WELDS ARE TO BE CLEAN AND NEAT IN APPEARANCE
  3. REMOVE ALL EXPOSED SHARP EDGES AND BURRS
  4. ALL STEEL TO BE ASTM A-36 UNLESS OTHERWISE SPECIFIED
  5. ALL WELDS TO BE 3/16" / 5mm MINIMUM CONTINUOUS FILLET UNLESS OTHERWISE SPECIFIED.
  6. ALL HARDWARE MUST BE METRIC CLASS 8.8 OR SAE GR 5 AND ZINC PLATED
  7. MARK ASSEMBLIES AND SUB-ASSEMBLIES (WHERE APPLICABLE) WITH MK IDENTIFIERS.
  8. ALL SLOT LENGTHS ARE END TO END U.N.O.
- PAINT NOTES:**  
PAINT ALL FABRICATED STEEL  
ONE SHOP COAT OF LIGHT GREY RAL 7035  
DO NOT PAINT MACHINED ITEMS, FASTENERS OF PURCHASED ITEMS.

REV	BY	DATE	DESCRIPTION	APP
A	MC	9/28/22	FOR FABRICATION	

**REVISION HISTORY**

	<b>MILLER INDUSTRIES</b> 3070 W. THOMPSON RD. FENTON, MI 48430 PH: 810.373.0322 FAX: 810.373.0326 www.millc.com	PROPRIETARY AND CONFIDENTIAL INFORMATION CONTAINED IN THIS DRAWING IS THE SOLE PROPERTY OF MILLER INDUSTRIES. ANY REPRODUCTION IN PART OR AS WHOLE WITHOUT THE WRITTEN PERMISSION OF MILLER INDUSTRIES IS PROHIBITED.
--	-----------------------------------------------------------------------------------------------------------------------------	-----------------------------------------------------------------------------------------------------------------------------------------------------------------------------------------------------------------------

TITLE: <b>P6700 CONVEYORS CAMPUS BUILDING</b>	DRAWN BY: <b>RJB</b>
CLIENT: <b>VOLVO</b>	CHECKED BY: <b>CW</b>
DRAWING No. <b>1875D063</b>	DWG DATE: <b>9/26/22</b>
REV: <b>A</b>	JOB No: <b>22096</b>

**MAGNUM CONSULTING**  
41100 Dardickwood Rd.  
Suite 125  
North, MI 48315  
Phone: (248) 772-8822  
Fax: (248) 772-8851  
Web: www.mmagnum.com

MAGNUM JOB #: 1875  
MAGNUM DRAWING #: 1875D063 - REV A

UNLESS OTHERWISE NOTED:  
X = ±.060  
XX = ±.030  
XXX = ±.005  
FRACTIONS = ±1/16"  
ANGLES = ±1°30'  
BREAK ALL SHARP EDGES  
DEBURR ALL HOLES  
DO NOT SCALE DRAWING

**GENERAL NOTES:**

**MATERIALS:**  
- ALL WIDE FLG. MATERIAL TO BE ASTM A992-GR50 U.N.O.  
- ALL TUBE MATERIAL TO BE ASTM A500, GRADE B U.N.O.  
- ALL PIPE MATERIAL TO BE ASTM A53, GRADE B U.N.O.  
- ALL OTHER MATERIAL TO BE ASTM-A36 U.N.O.

**HOLES:**  
- ALL HOLES ARE 13/16" DIA. U.N.O.  
- ALL BOLTED CONNECTIONS TO BE 3/4" DIA A325-N (SHEAR BEARING TYPE CONNECTIONS) WITH BOLTS INSTALLED IN SNUG TIGHT CONDITION, UNLESS NOTED.

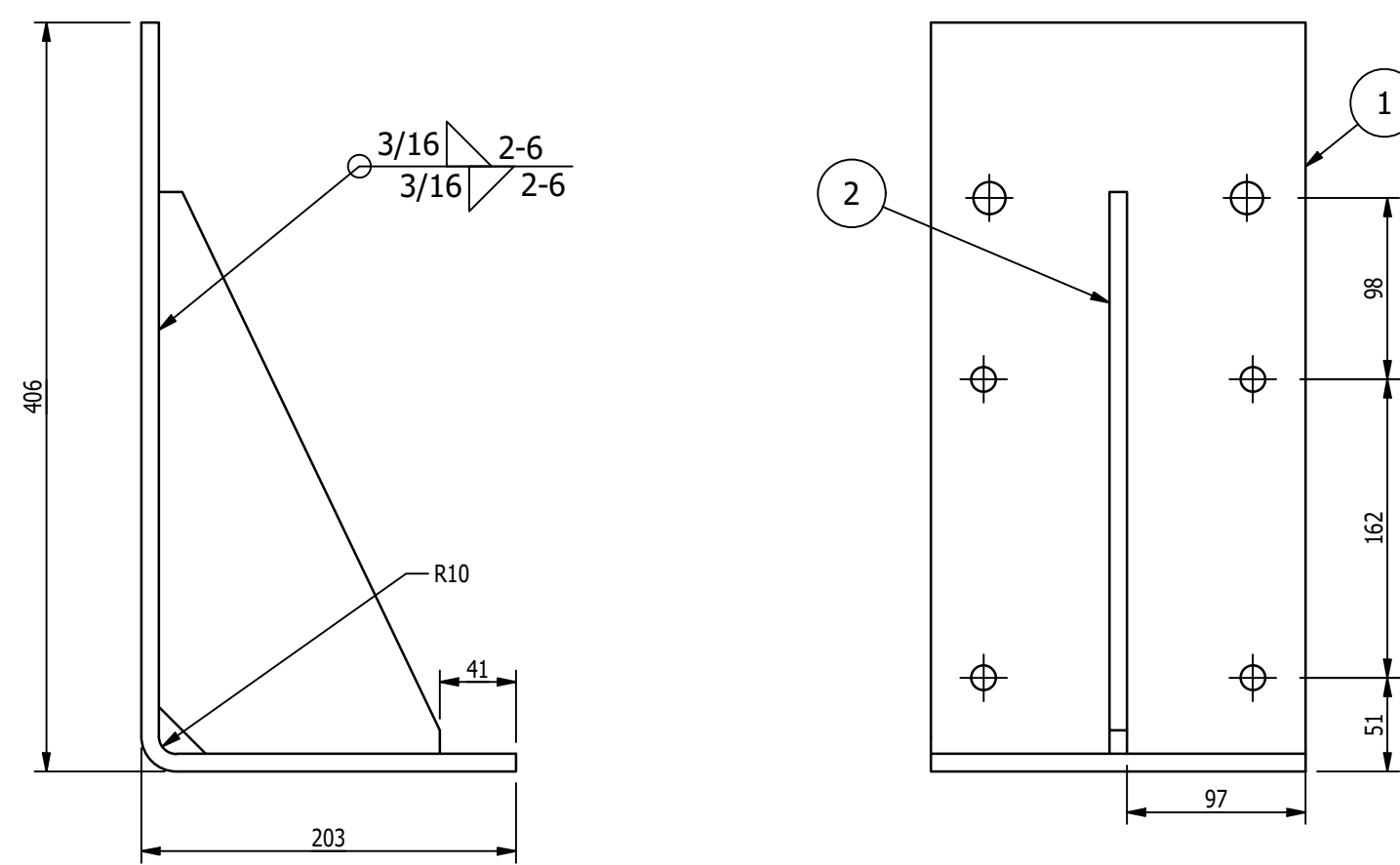
**WELDS:**  
- ALL WELDS TO BE "E70XX", (PER AWS D1.1)

**PAINT:**  
- PAINT PER CUSTOMER SPECIFICATIONS U.N.O.

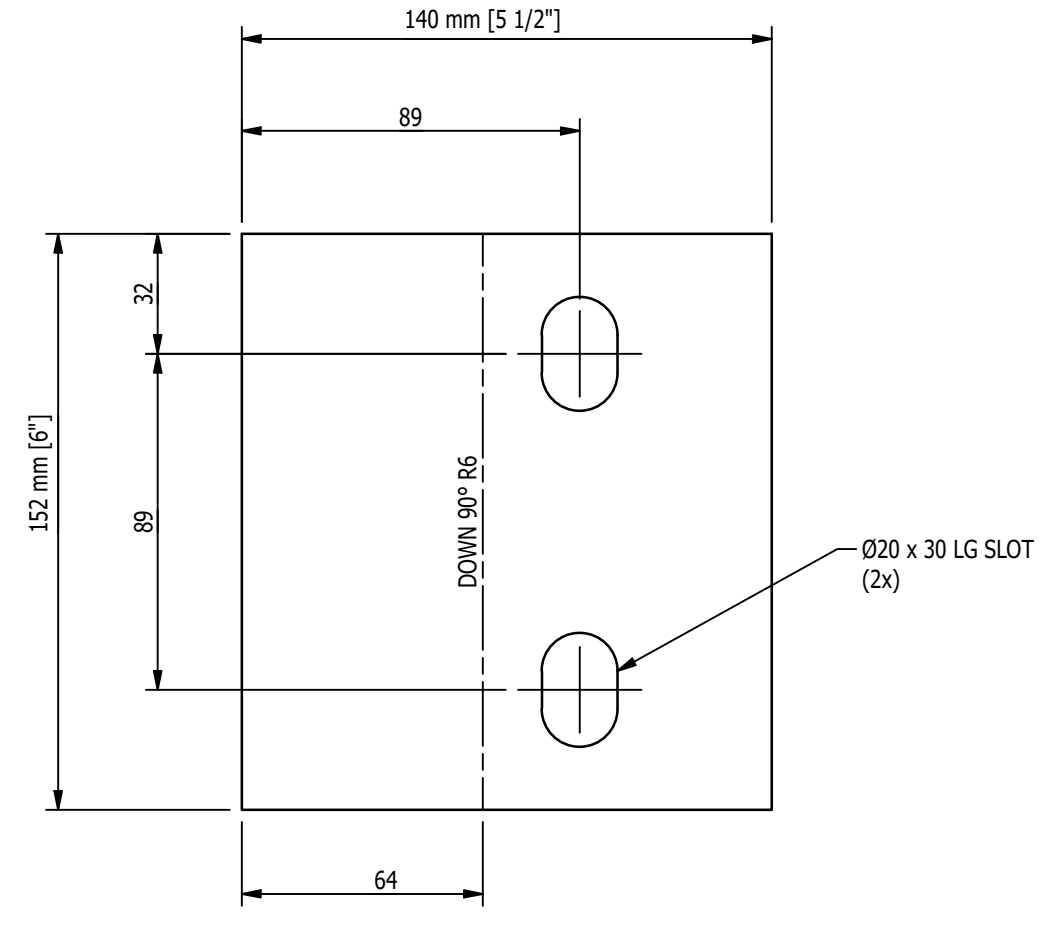
**COPIES:**  
- ALL REentrant CUTS TO BE A MIN 1/2" RADIUS U.N.O.



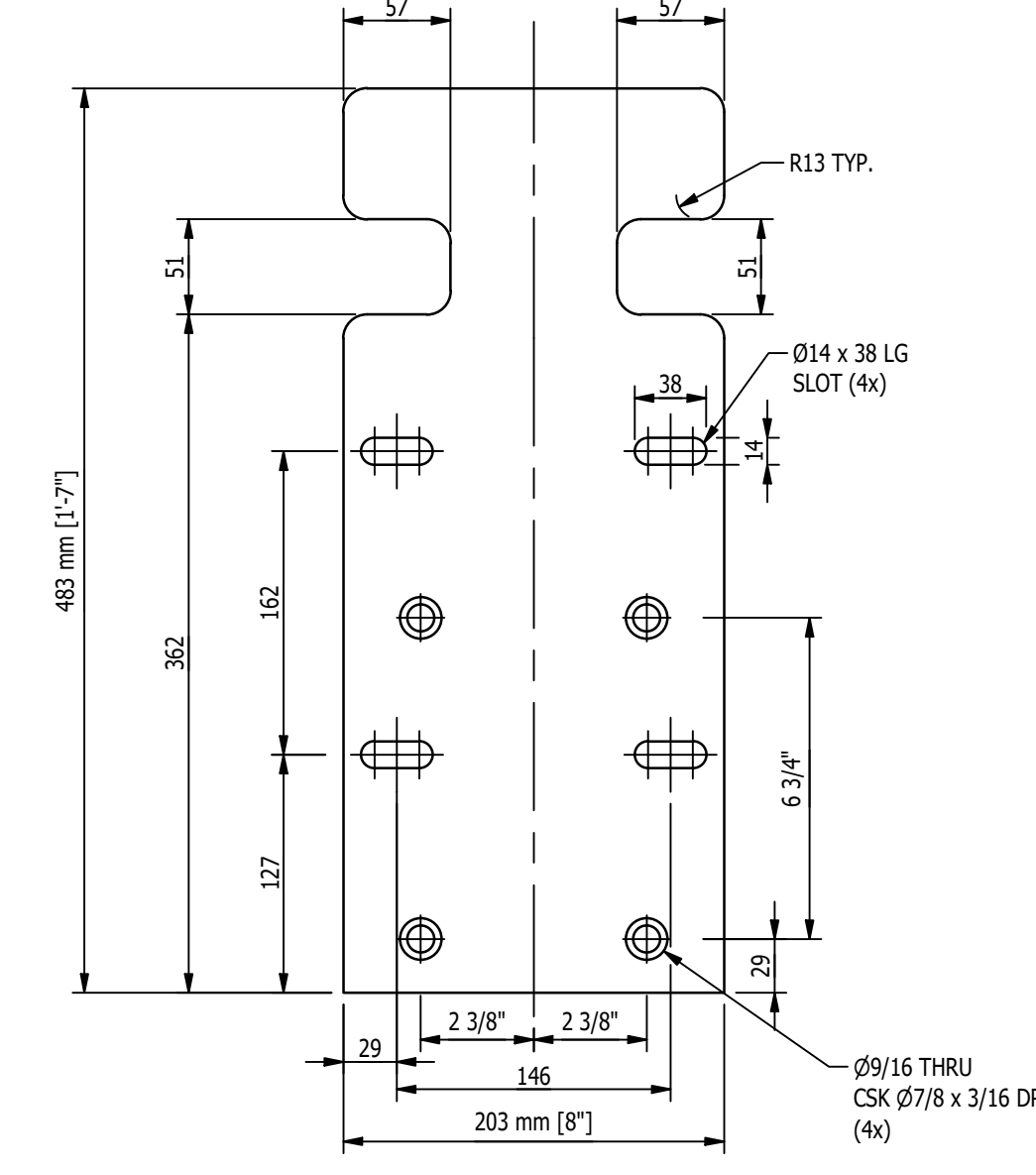
BILL OF MATERIAL					
MARK	QTY	DESCRIPTION	LENGTH	ABM #	REMARKS
		MK-D064A			
1	1	PL 3/8 x 8"	1'-11 3/8"		
2	1	BAR 3/8 x 6	1'-0"		
		MK-D064B			
3	1	PL 3/8 x 8"	1'-7"		
4	1	PL 2 1/2 x 3 3/4"	3 3/4"		
5	1	SHT 1/4 x 5 1/2	6"		
		MK-D064C			
3	1	PL 3/8 x 8"	1'-7"		
4	1	PL 2 1/2 x 3 3/4"	3 3/4"		
5	1	SHT 1/4 x 5 1/2	6"		



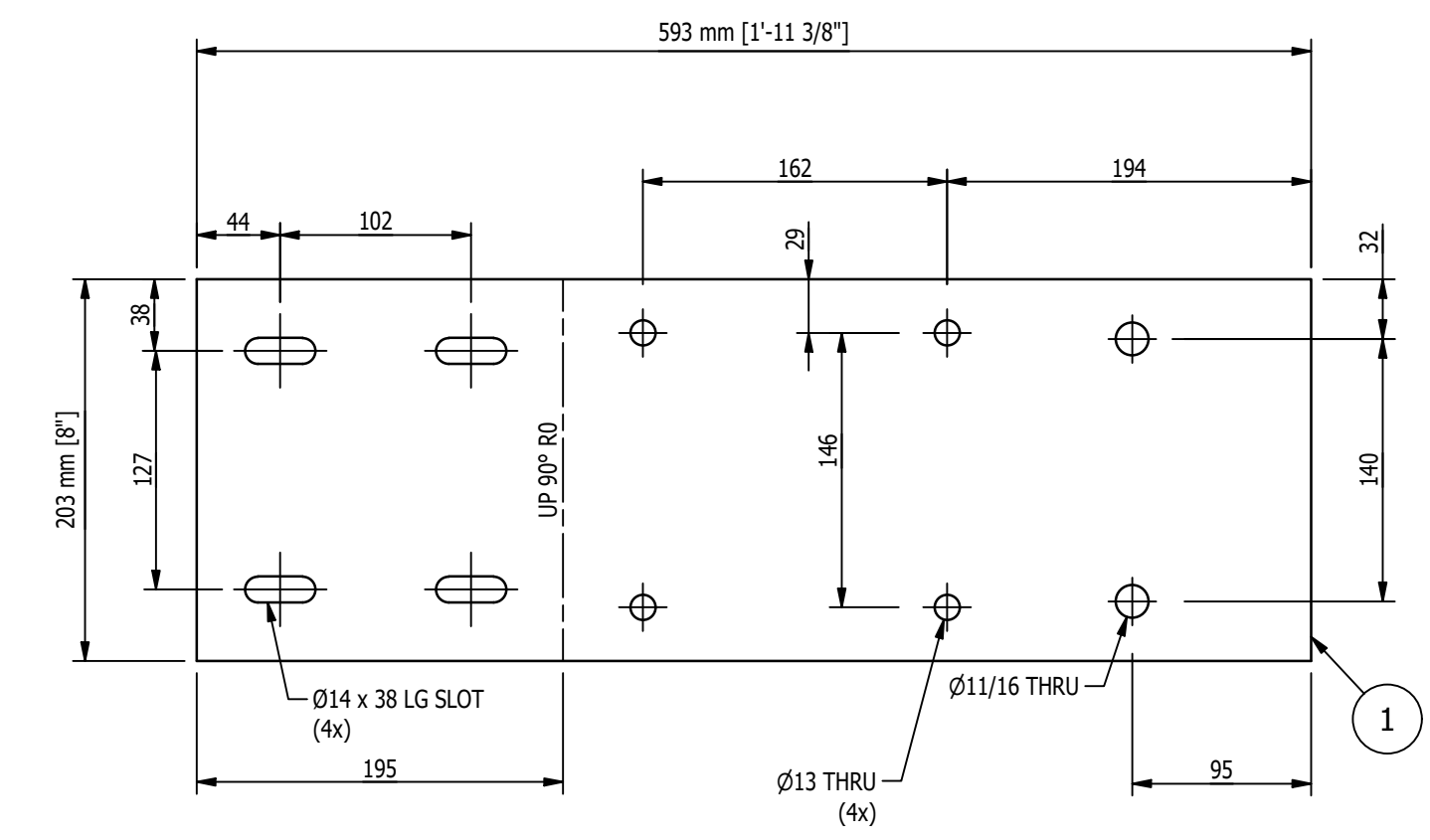
MK-D064A ~ BRACKET WELDMENT  
SCALE 3"=1'-0"



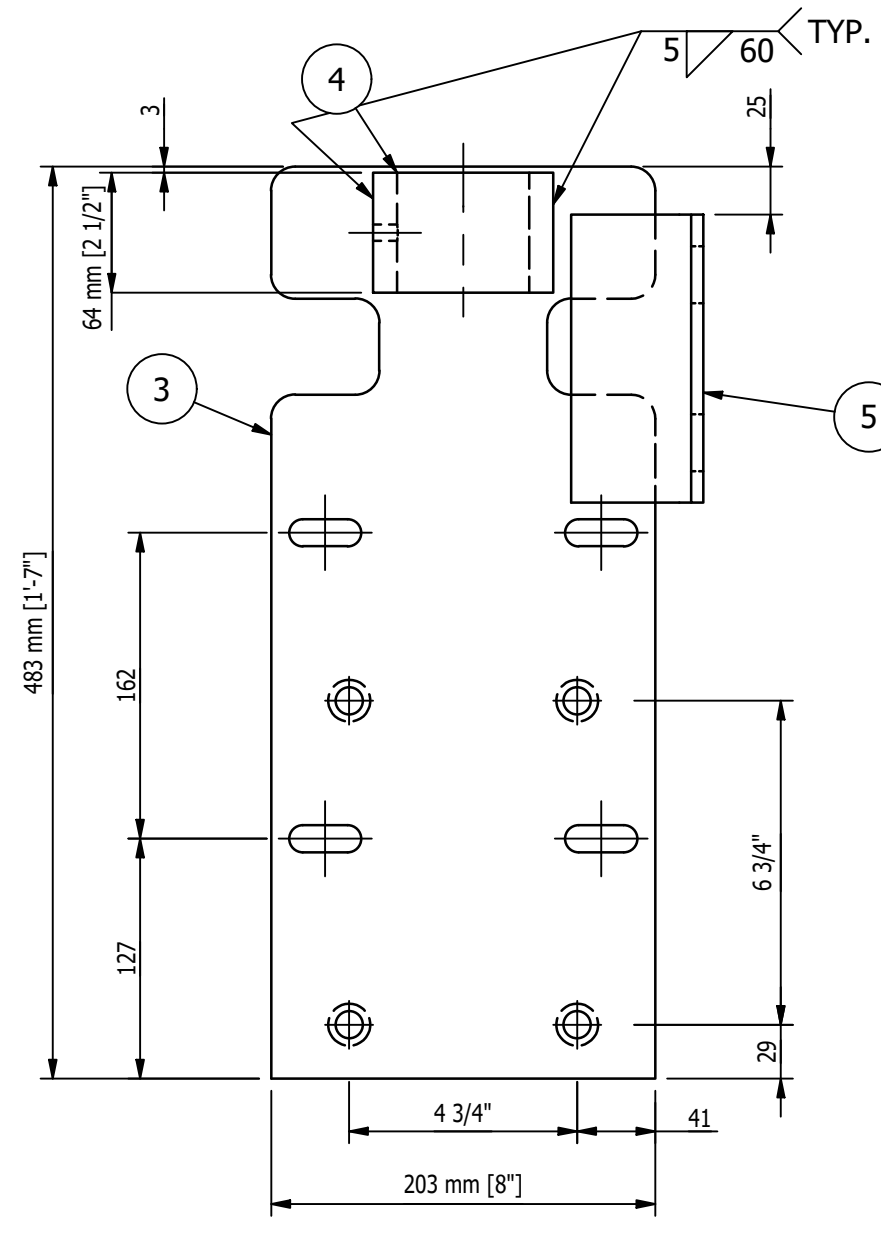
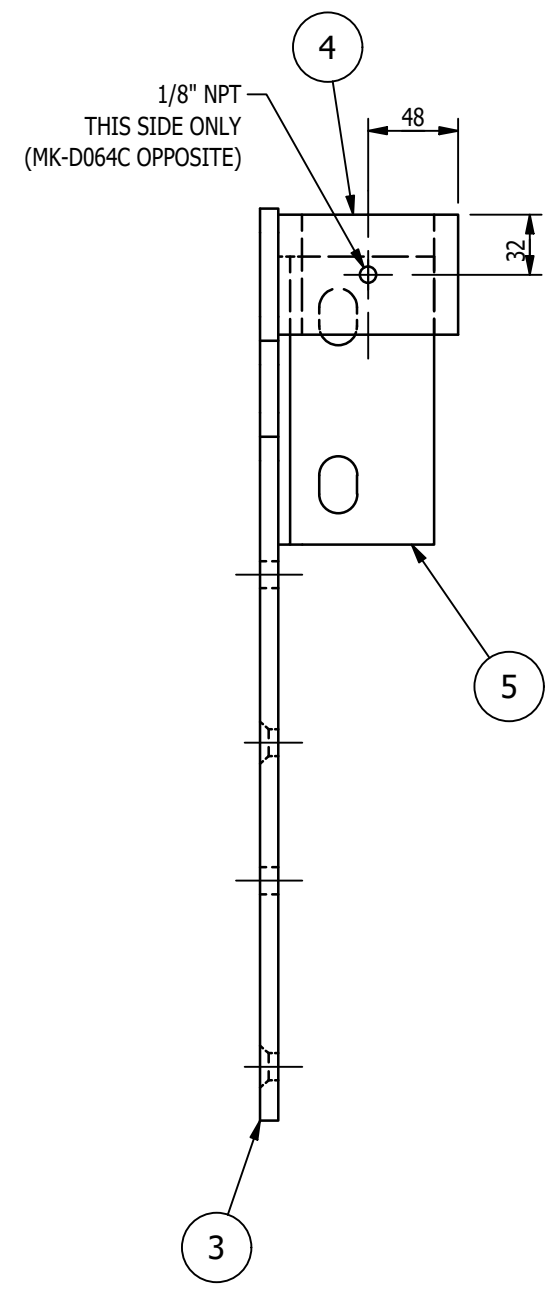
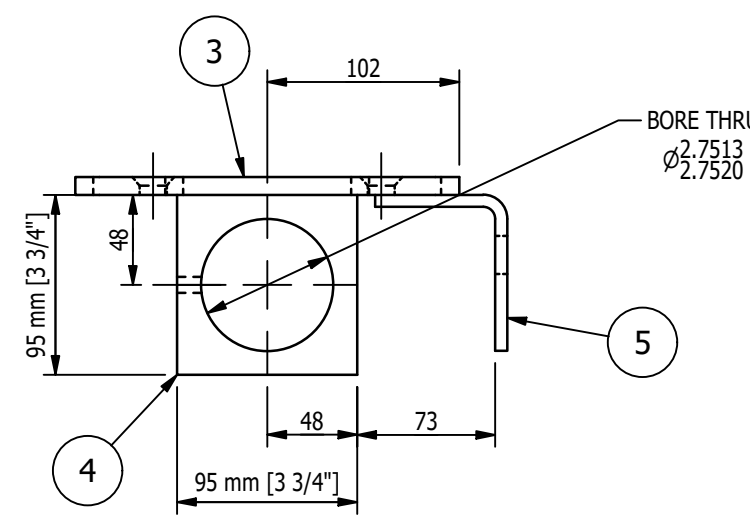
FLAT PATTERN OF ITEM '5'  
SCALE 6"=1'-0"



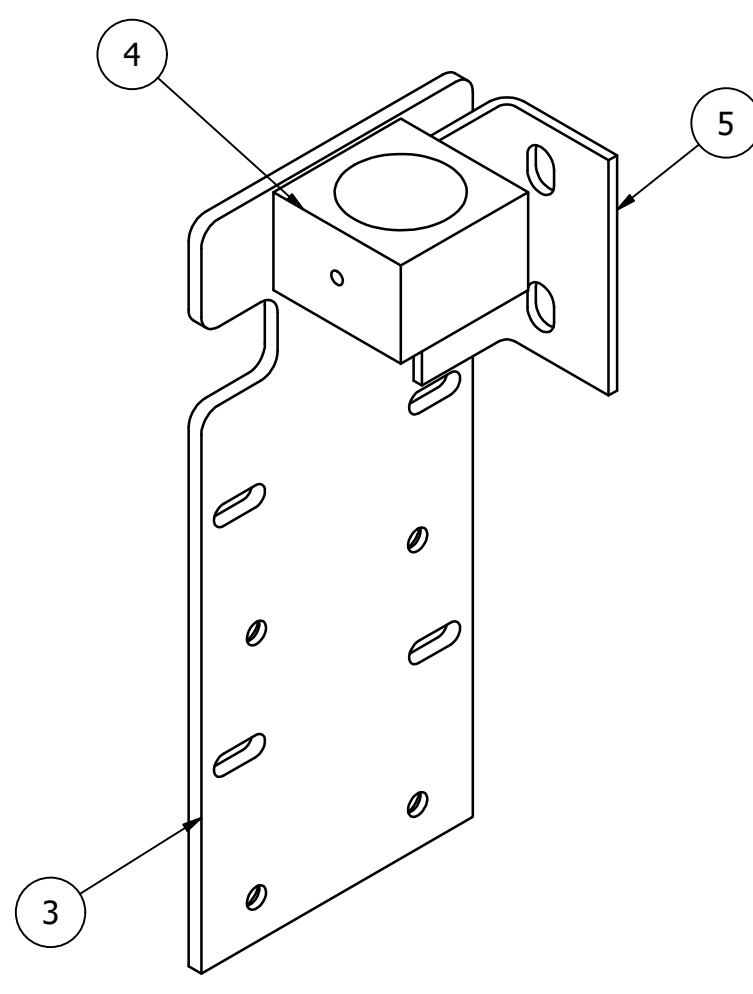
DETAIL ITEM '3'  
SCALE 3"=1'-0"



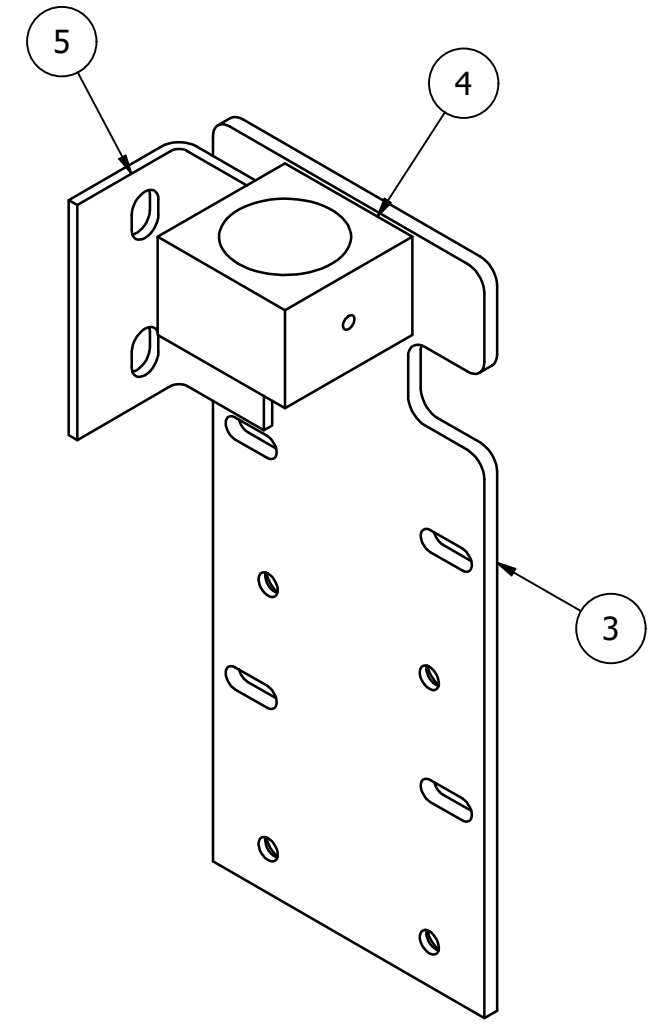
FLAT PATTERN OF ITEM '1'  
SCALE 3"=1'-0"



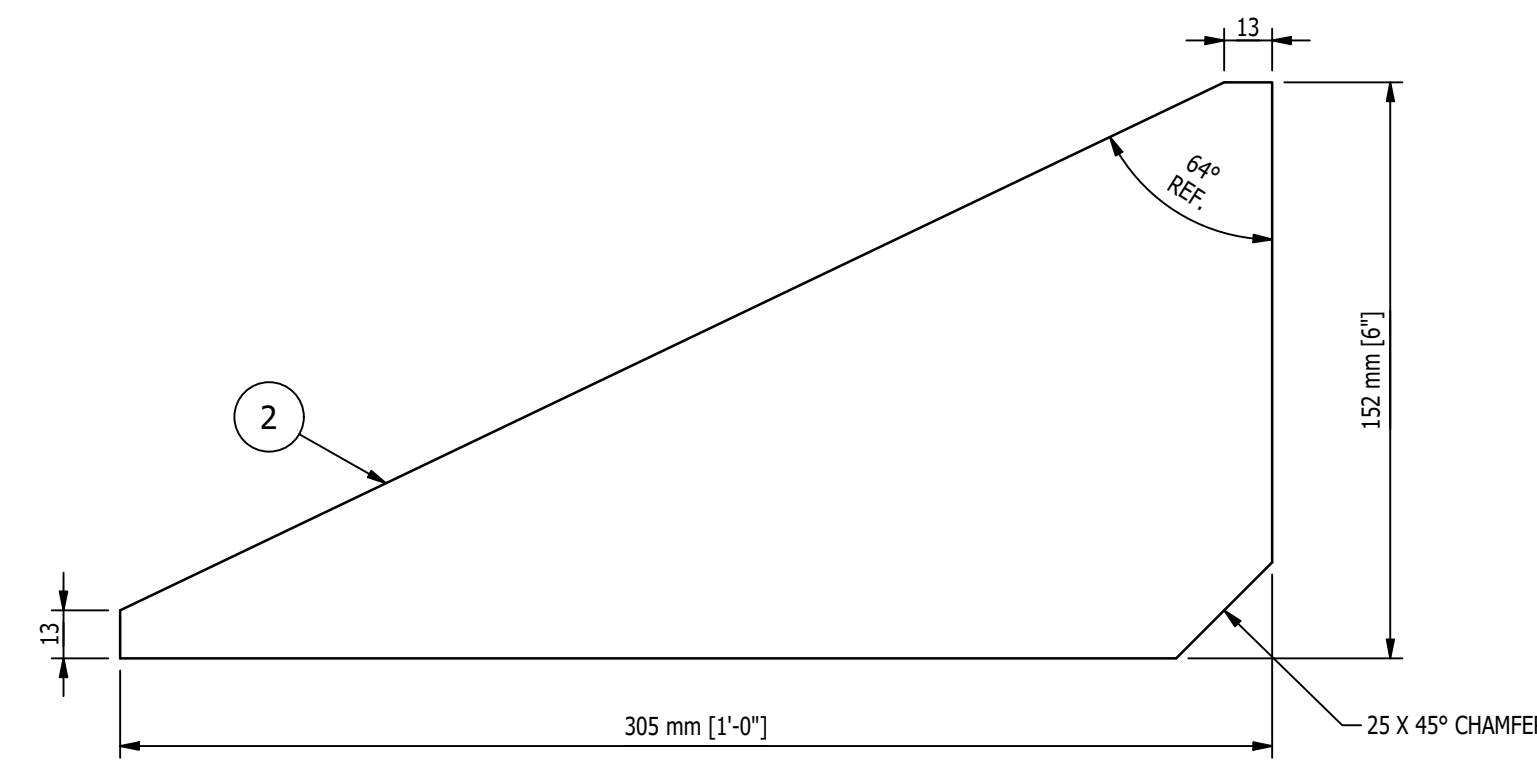
MK-D064B ~ GUIDE WELDMENT - RH (SHOWN)  
MK-D064C ~ GUIDE WELDMENT - LH (OPPOSITE)  
SCALE 3"=1'-0"



ISOVIEW OF MK-D064B  
SCALE 3"=1'-0"



ISOVIEW OF MK-D064C  
SCALE 3"=1'-0"



DETAIL OF ITEM '2'  
SCALE 6"=1'-0"

**PAINT NOTES:**  
PAINT ALL FABRICATED STEEL  
ONE SHOP COAT OF LIGHT GREY RAL 7035  
DO NOT PAINT MACHINED ITEMS, FASTENERS  
OF PURCHASED ITEMS.

- SHOP NOTES:**
1. ALL MATERIAL IS TO BE FREE FROM RUST, SCALE & WELD SLAG
  2. ALL WELDS ARE TO BE CLEAN AND NEAT IN APPEARANCE
  3. REMOVE ALL EXPOSED SHARP EDGES AND BURRS
  4. ALL STEEL TO BE ASTM A-36 UNLESS OTHERWISE SPECIFIED
  5. ALL WELDS TO BE 3/16" / 5mm MINIMUM CONTINUOUS FILLET UNLESS OTHERWISE SPECIFIED.
  6. ALL HARDWARE MUST BE METRIC CLASS 8.8 OR SAE GR 5 AND ZINC PLATED
  7. MARK ASSEMBLIES AND SUB-ASSEMBLIES (WHERE APPLICABLE) WITH MK IDENTIFIERS.
  8. ALL SLOT LENGTHS ARE END TO END U.N.O.

REV	BY	DATE	DESCRIPTION	APP
A	MC	10/25/22	FOR FABRICATION	

**REVISION HISTORY**

	<b>MILLER INDUSTRIES</b> 3070 W. THOMPSON RD. FENTON, MI 48430 PH: 810.373.0322 FAX: 810.373.0326 www.millc.com	PROPRIETARY AND CONFIDENTIAL INFORMATION CONTAINED IN THIS DRAWING IS THE SOLE PROPERTY OF MILLER INDUSTRIES. ANY REPRODUCTION IN PART OR AS WHOLE WITHOUT THE WRITTEN PERMISSION OF MILLER INDUSTRIES IS PROHIBITED.
--	-----------------------------------------------------------------------------------------------------------------------------	-----------------------------------------------------------------------------------------------------------------------------------------------------------------------------------------------------------------------

TITLE: <b>P6700 CONVEYORS CAMPUS BUILDING</b>	DRAWN BY: <b>RJB</b>
CLIENT: <b>VOLVO</b>	CHECKED BY: <b>CW</b>
DRAWING No. <b>1875D064</b>	DWG DATE: <b>9/26/22</b>
REV: <b>A</b>	JOB No: <b>22096</b>

**MAGNUM CONSULTING**  
41100 Dardickwood Rd.  
Suite 125  
North, MI 48135  
Phone: (248) 772-8800  
Fax: (248) 772-8801  
Web: www.m4magnum.com

UNLESS OTHERWISE NOTED:  
X = ±.060  
XX = ±.030  
XXX = ±.005  
FRACTIONS = ±1/16"  
ANGLES = ±1°30'  
BREAK ALL SHARP EDGES  
DEBURR ALL HOLES  
DO NOT SCALE DRAWING

**GENERAL NOTES:**

**MATERIALS:**  
- ALL WIDE FLG. MATERIAL TO BE ASTM A892-GR50 U.N.O.  
- ALL TUBE MATERIAL TO BE ASTM A500, GRADE B U.N.O.  
- ALL PIPE MATERIAL TO BE ASTM A53, GRADE B U.N.O.  
- ALL OTHER MATERIAL TO BE ASTM-A36 U.N.O.

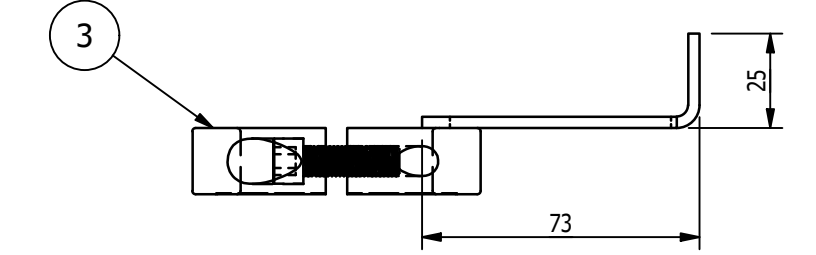
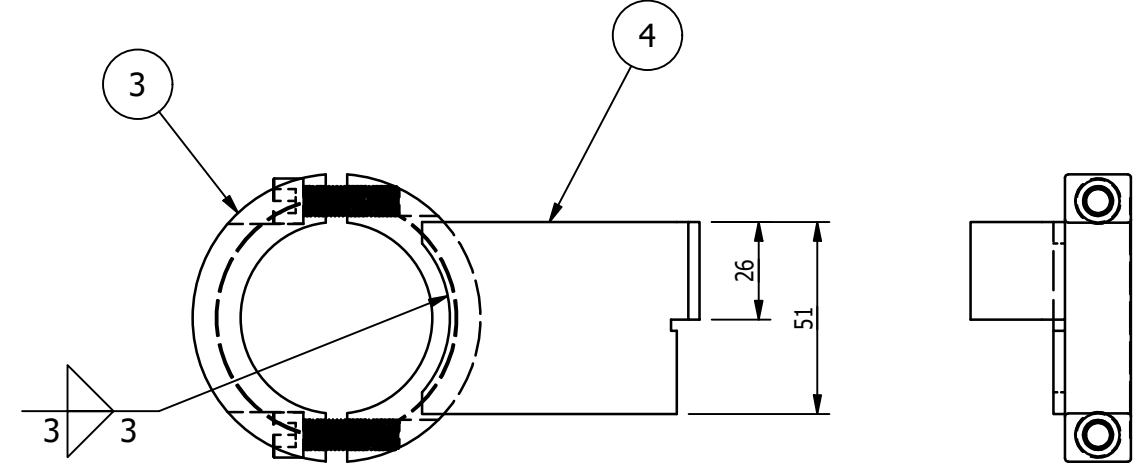
**HOLES:**  
- ALL HOLES ARE 13/16" DIA. U.N.O.  
- ALL BOLTED CONNECTIONS TO BE 3/4" DIA A325-N (SHEAR BEARING TYPE CONNECTIONS) WITH BOLTS INSTALLED IN SLUG TIGHT CONDITION, UNLESS NOTED.

**WELDS:**  
- ALL WELDS TO BE 'E70XX', (PER AWS D1.1)

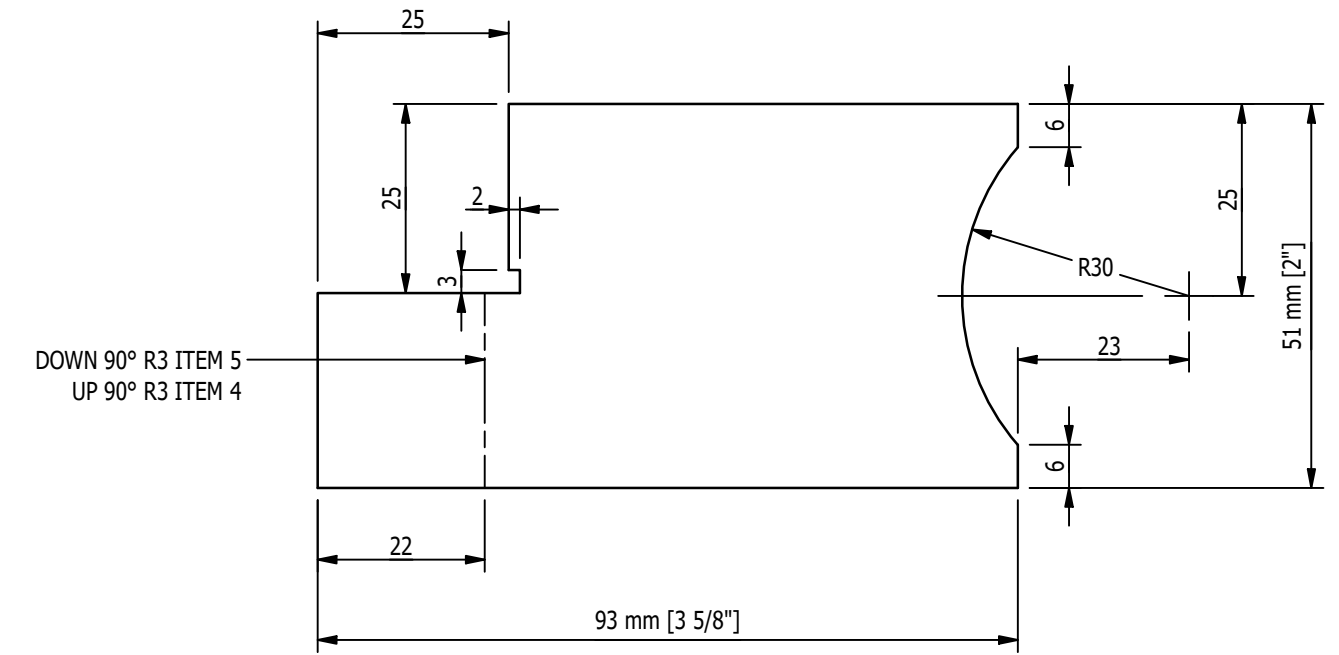
**PAINT:**  
- PAINT PER CUSTOMER SPECIFICATIONS U.N.O.

**COPIES:**  
- ALL REentrant CUTS TO BE A MIN 1/2" RADIUS U.N.O.

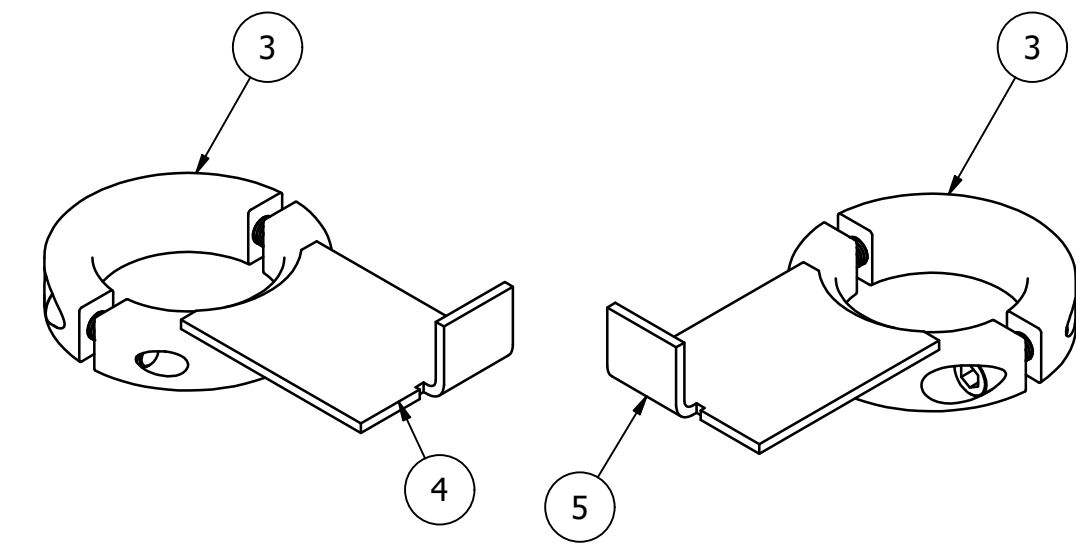
BILL OF MATERIAL					
MARK	QTY	DESCRIPTION	LENGTH	ABM #	REMARKS
		MK-D065A			
1	1	BAR Ø2 (CRS)	7 5/8"		
2	1	BAR 1 3/16" x 1 1/2"	2 7/16"		
		MK-D065B			
3	1	TWO PIECE CLAMP COLLAR ~ MCMaster-CARR # 6436K27		24-7	
4	1	SHT 11 GA x 2	3 5/8"		
		MK-D065C			
3	1	TWO PIECE CLAMP COLLAR ~ MCMaster-CARR # 6436K27		24-7	
5	1	SHT 11 GA x 2	3 5/8"		



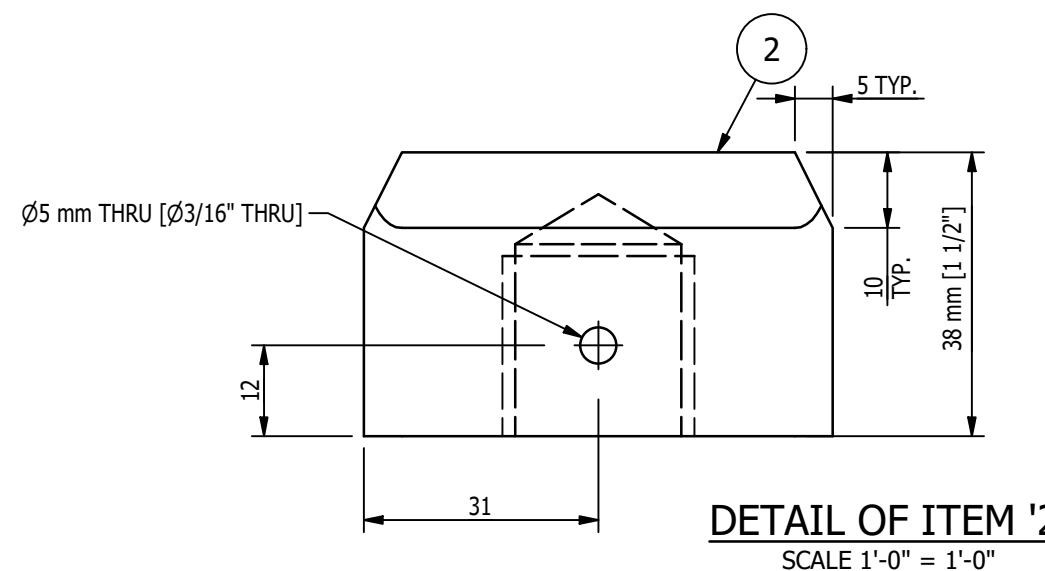
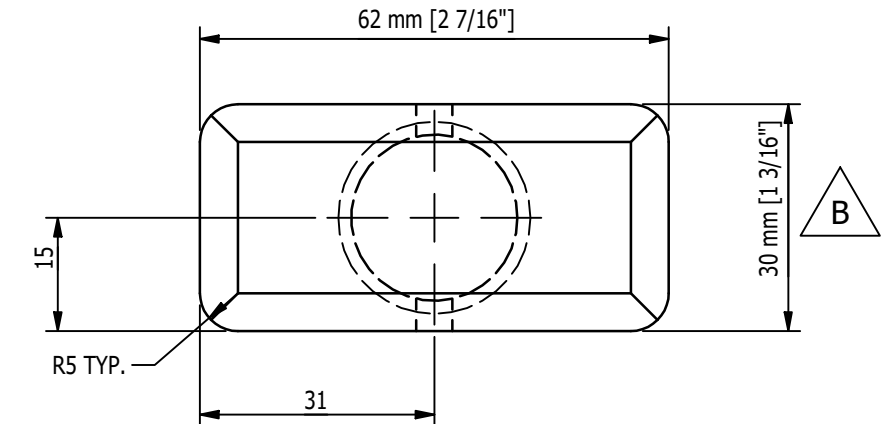
MK-D065B ~ PROX TARGET ASSY (RH SHOWN)  
MK-D065C ~ PROX TARGET ASSY (LH SHOWN)  
SCALE 6"=1'-0"



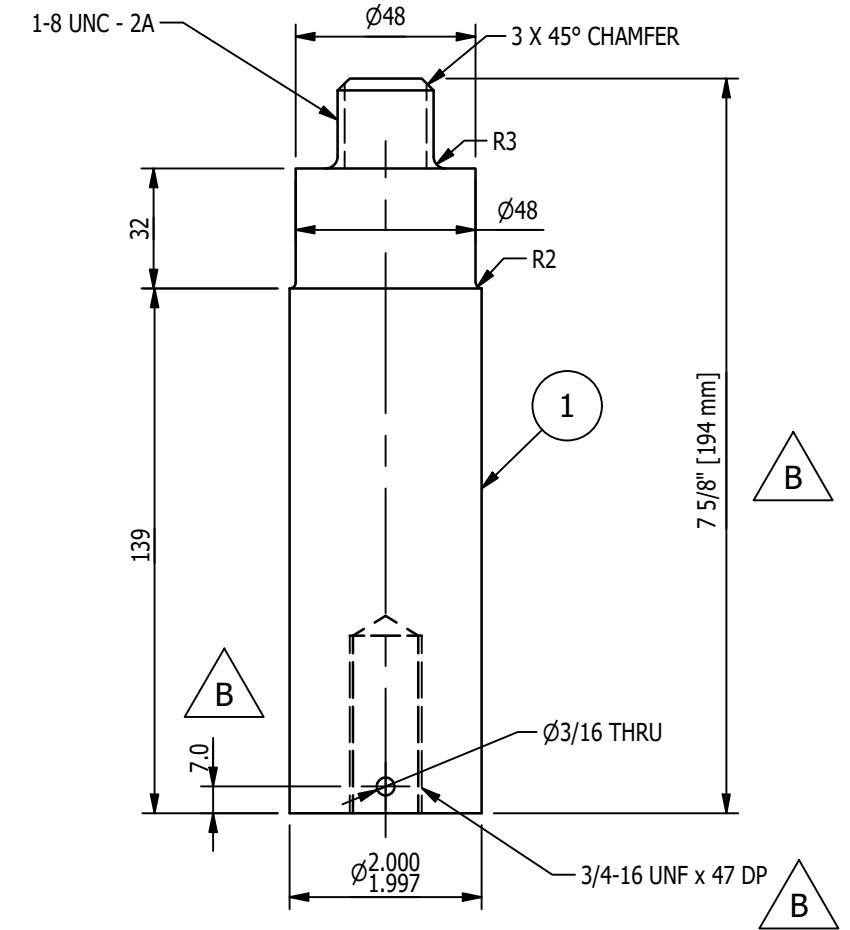
FLAT PATTERN ITEMS '4', '5'  
SCALE 1'-0"= 1'-0"



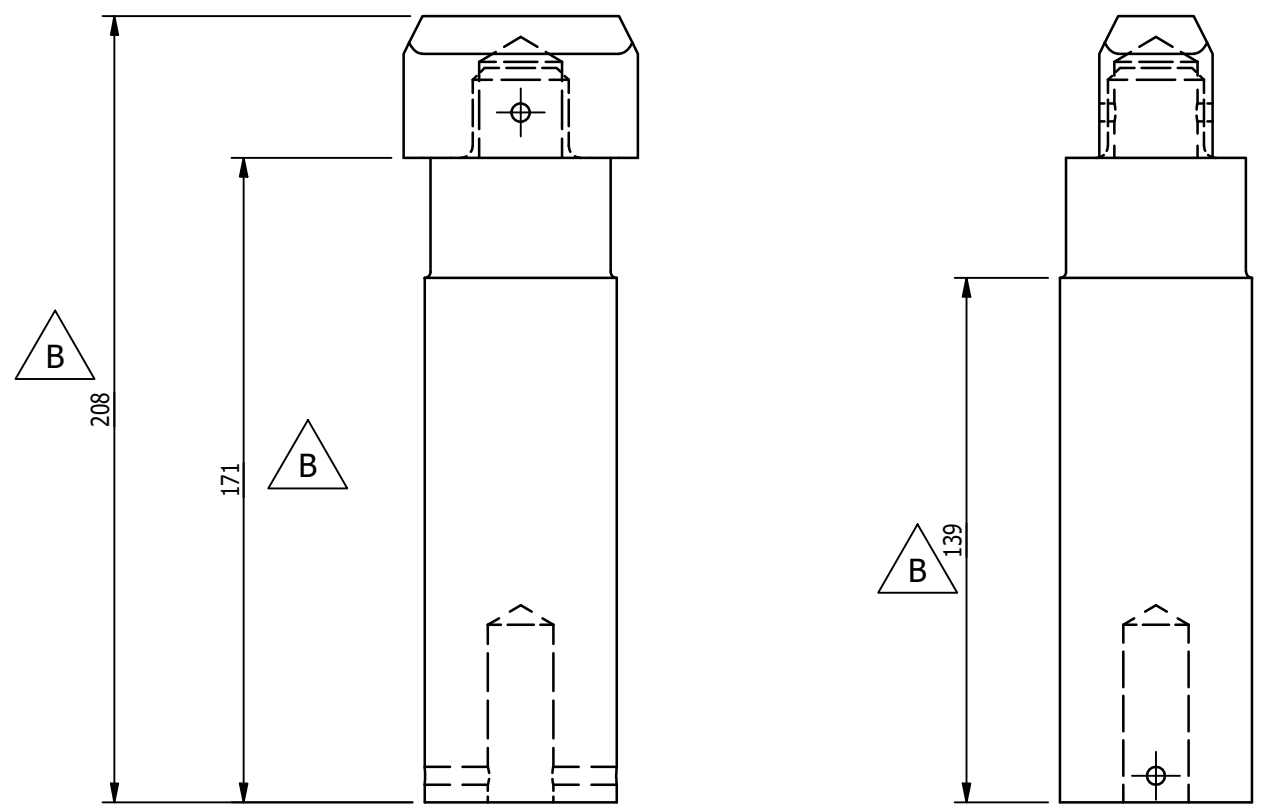
MK-D065B  
SCALE 6"=1'-0"  
MK-D065C  
SCALE 6"=1'-0"



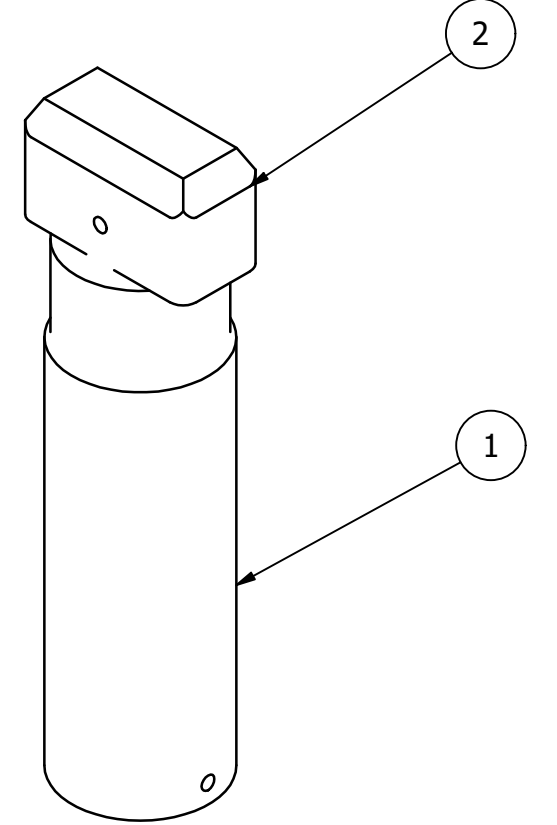
DETAIL OF ITEM '2'  
SCALE 1'-0"= 1'-0"



DETAIL OF ITEM '1'  
SCALE 6"=1'-0"



MK-D065A ~ PIN ASSEMBLY  
SCALE 6"=1'-0"



ISOVIEW OF MK-D065A  
SCALE 6"=1'-0"

**PAINT NOTES:**  
PAINT ONLY ITEMS 3, 4, 5  
ONE SHOP COAT OF PURE ORANGE RAL 2004  
DO NOT PAINT MACHINED ITEMS, FASTENERS  
OF PURCHASED ITEMS.

- SHOP NOTES:**
1. ALL MATERIAL IS TO BE FREE FROM RUST, SCALE & WELD SLAG
  2. ALL WELDS ARE TO BE CLEAN AND NEAT IN APPEARANCE
  3. REMOVE ALL EXPOSED SHARP EDGES AND BURRS
  4. ALL STEEL TO BE ASTM A-36 UNLESS OTHERWISE SPECIFIED
  5. ALL WELDS TO BE 3/16" / 5mm MINIMUM CONTINUOUS FILLET UNLESS OTHERWISE SPECIFIED.
  6. ALL HARDWARE MUST BE METRIC CLASS 8.8 OR SAE GR 5 AND ZINC PLATED
  7. MARK ASSEMBLIES AND SUB-ASSEMBLIES (WHERE APPLICABLE) WITH MK IDENTIFIERS.
  8. ALL SLOT LENGTHS ARE END TO END U.N.O.

REV	BY	DATE	DESCRIPTION	APP
B	MC	11/28/22	REV DIMS ITEMS 1, 2	
A	MC	10/25/22	FOR FABRICATION	

REVISION HISTORY	
REV	APP

**MILLER INDUSTRIES**  
3070 W. THOMPSON RD.  
FENTON, MI 48430  
PH: 810.373.0322 FAX: 810.373.0326  
www.millic.com

TITLE:	P6700 CONVEYORS CAMPUS BUILDING	DRAWN BY:	RJB
CLIENT:	VOLVO	CHECKED BY:	CW
DRAWING No.	1875D065	DWG DATE:	9/26/22
REV:	B	JOB No:	22096

**MAGNUM CONSULTING**  
41100 QuakerRoad Rd.  
Suite 125  
West, MI 48375  
Phone: (248) 772-8822  
Fax: (248) 772-8851  
Web: www.mmagnum.com

UNLESS OTHERWISE NOTED:  
X = ±.060  
XX = ±.030  
XXX = ±.005  
FRACTIONS = ±1/16"  
ANGLES = ±1°30'  
BREAK ALL SHARP EDGES  
DEBURR ALL HOLES  
DO NOT SCALE DRAWING

**GENERAL NOTES:**

MATERIALS:  
- ALL WIDE FLG. MATERIAL TO BE ASTM A892-GR50 U.N.O.  
- ALL TUBE MATERIAL TO BE ASTM A500, GRADE B U.N.O.  
- ALL PIPE MATERIAL TO BE ASTM A53, GRADE B U.N.O.  
- ALL OTHER MATERIAL TO BE ASTM-A36 U.N.O.

HOLES:  
- ALL HOLES ARE 13/16" DIA. U.N.O.  
- ALL BOLTED CONNECTIONS TO BE 3/4" DIA A325-N (SHEAR BEARING TYPE CONNECTIONS) WITH BOLTS INSTALLED IN SLUG TIGHT CONDITION, UNLESS NOTED.

WELDS:  
- ALL WELDS TO BE "E70XX", (PER AWS D1.1)

PAINT:  
- PAINT PER CUSTOMER SPECIFICATIONS U.N.O.

COPIES:  
- ALL REentrant CUTS TO BE A MIN 1/2" RADIUS U.N.O.