

Valiant TMS



Company / customer Volvo Trucks NA
 Project description P6700 Bodyside RH - Robot Cell 2V10
 drawing number 22-16150
 Commission Volvo Trucks North America

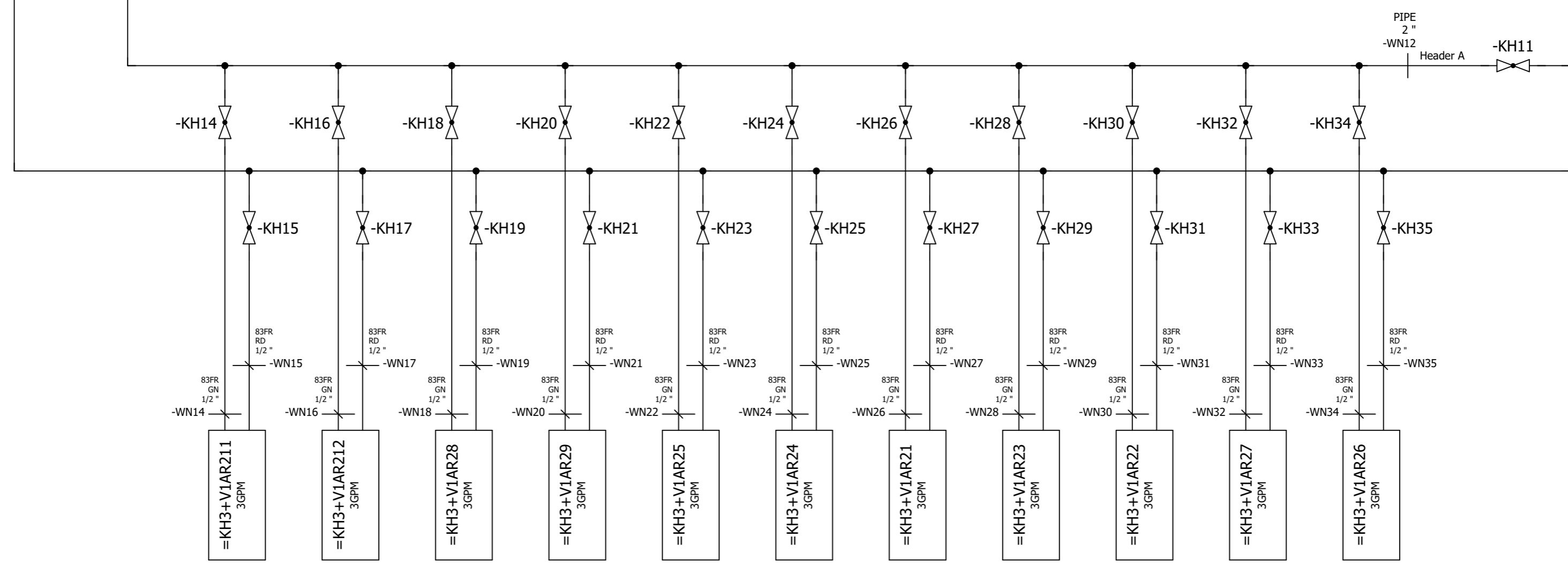
Manufacturer (company) Valiant TMS
 Project name =2V10&MFS-WATER
 Type P6700 Bodyside RH - Robot Cell 2V10

Created on 11/23/2022
 Edit date 11/23/2022 by (short name) MKLEPADLO
 Number of pages 7

Date	11/23/2022	Volvo Trucks North America		Valiant TMS	Title page / cover sheet	Drawing name:	=		
Ed.	MKLEPADLO	P6700 Bodyside RH - Robot Cell 2V10					=2V10&EFS-WATER	+	
Appr						Document type:	Project nr:	Page	1
Modification	Date	Name	Original	Replacement of	Replaced by	MAA	22-16150		7
					Scale 1:1				


1.8
Return to
plant header

1.6
Feed from
plant header



1

&MPB/1

			Date	11/23/2022	Volvo Trucks North America		 Valiant TMS Water distribution	Drawing name:		= KH3	
			Ed.	MKLEPADLO	P6700 Bodyside RH - Robot Cell 2V10			=2V10&EFS-WATER		+ KH3	
			Appr		Replacement of		Scale 1:1	Document type:	Project nr:	Page	
Modification	Date	Name	Original		Replaced by			MFS	22-16150	2	
										7	

Parts list

F01_001

Device tag	Quantity	Designation	Type number	Supplier	Part number
=KH3-A1	1	1/4" Pressure gauge, 0~100PSI 2-1/2" dial w/ABS case	25.110.100	NOSHOK	25.110.100
=KH3-A2	1	1/4" Pressure gauge, 0~100PSI 2-1/2" dial w/ABS case	25.110.100	NOSHOK	25.110.100
=KH3-A3	1	1/4" Pressure gauge, 0~100PSI 2-1/2" dial w/ABS case	25.110.100	NOSHOK	25.110.100
=KH3-BF1	1	Water differential pressure switch w/gage, 1/4 pt	DP-F-KIT	OMNI CONTROLS	DP-F-KIT
=KH3-BF2	1	Water flow switch, 1/2" NPT, PNP N.O., M12, Immersion Sensor	FCS-N1/2A4-AP8X-H1141	TURCK	TUR.FCS-N1/2A4-AP8X-H1141
=KH3-FL1	1	2" CHECK VALVE, IN LINE	61-108-01	CONBRACO	61-108-01
=KH3-HQ1	1	2" Water bag filter; NPT size 2, 200 GPM max flow	20403-001-2"	OMNI CONTROLS	20403-001-2"
=KH3-KH1	1	1-1/2" BALL VALVE, 2PC FULL PORT BRONZE W/LOCK - NPT	77-107-46	APOLLO	77-107-46
=KH3-KH1	1	1-1/2" ~ 2" BALL VALVE HANDLE COVER, RED	W-8374-RED	CONBRACO	W-8374-RED
=KH3-KH2	1	2" BALL VALVE, 2PC FULL PORT BRONZE W/LOCK - NPT	77-108-46	APOLLO	77-108-46
=KH3-KH2	1	1-1/2" ~ 2" BALL VALVE HANDLE COVER, GREEN	W-8374-GREEN	CONBRACO	W-8374-GREEN
=KH3-KH3	1	1/4" BALL VALVE, 2PC FULL PORT BRONZE - NPT	77-101-01	APOLLO	77-101-01
=KH3-KH3	1	1/4"~1/2" BALL VALVE HANDLE COVER, GREEN	W-8368-GREEN	CONBRACO	W-8368-GREEN
=KH3-KH4	1	1/4" BALL VALVE, 2PC FULL PORT BRONZE - NPT	77-101-01	APOLLO	77-101-01
=KH3-KH4	1	1/4"~1/2" BALL VALVE HANDLE COVER, GREEN	W-8368-GREEN	CONBRACO	W-8368-GREEN
=KH3-KH5	1	1/4" BALL VALVE, 2PC FULL PORT BRONZE - NPT	77-101-01	APOLLO	77-101-01
=KH3-KH5	1	1/4"~1/2" BALL VALVE HANDLE COVER, GREEN	W-8368-GREEN	CONBRACO	W-8368-GREEN
=KH3-KH6	1	2" BALL VALVE, 2PC FULL PORT BRONZE W/LOCK - NPT	77-108-46	APOLLO	77-108-46
=KH3-KH6	1	1-1/2" ~ 2" BALL VALVE HANDLE COVER, GREEN	W-8374-GREEN	CONBRACO	W-8374-GREEN
=KH3-KH7	1	2" BALL VALVE, 2PC FULL PORT BRONZE W/LOCK - NPT	77-108-46	APOLLO	77-108-46
=KH3-KH7	1	1-1/2" ~ 2" BALL VALVE HANDLE COVER, GREEN	W-8374-GREEN	CONBRACO	W-8374-GREEN
=KH3-KH8	1	1/4" BALL VALVE, 2PC FULL PORT BRONZE - NPT	77-101-01	APOLLO	77-101-01
=KH3-KH8	1	1/4"~1/2" BALL VALVE HANDLE COVER, GREEN	W-8368-GREEN	CONBRACO	W-8368-GREEN
=KH3-KH9	1	2" BALL VALVE, 2PC FULL PORT BRONZE W/LOCK - NPT	77-108-46	APOLLO	77-108-46
=KH3-KH9	1	1-1/2" ~ 2" BALL VALVE HANDLE COVER, GREEN	W-8374-GREEN	CONBRACO	W-8374-GREEN
=KH3-KH11	1	2" BALL VALVE, 2PC FULL PORT BRONZE W/LOCK - NPT	77-108-46	APOLLO	77-108-46
=KH3-KH11	1	1-1/2" ~ 2" BALL VALVE HANDLE COVER, GREEN	W-8374-GREEN	CONBRACO	W-8374-GREEN
=KH3-KH14	1	1/2" BALL VALVE, 2PC FULL PORT BRONZE W/LOCK - NPT	77-103-46	APOLLO	77-103-46
=KH3-KH14	1	1/4"~1/2" BALL VALVE HANDLE COVER, GREEN	W-8368-GREEN	CONBRACO	W-8368-GREEN
=KH3-KH15	1	1/2" BALL VALVE, 2PC FULL PORT BRONZE W/LOCK - NPT	77-103-46	APOLLO	77-103-46
=KH3-KH15	1	1/4"~1/2" BALL VALVE HANDLE COVER, GREEN	W-8368-GREEN	CONBRACO	W-8368-GREEN
=KH3-KH16	1	1/2" BALL VALVE, 2PC FULL PORT BRONZE W/LOCK - NPT	77-103-46	APOLLO	77-103-46
=KH3-KH16	1	1/4"~1/2" BALL VALVE HANDLE COVER, GREEN	W-8368-GREEN	CONBRACO	W-8368-GREEN
=KH3-KH17	1	1/2" BALL VALVE, 2PC FULL PORT BRONZE W/LOCK - NPT	77-103-46	APOLLO	77-103-46
=KH3-KH17	1	1/4"~1/2" BALL VALVE HANDLE COVER, GREEN	W-8368-GREEN	CONBRACO	W-8368-GREEN
=KH3-KH18	1	1/2" BALL VALVE, 2PC FULL PORT BRONZE W/LOCK - NPT	77-103-46	APOLLO	77-103-46
=KH3-KH18	1	1/4"~1/2" BALL VALVE HANDLE COVER, GREEN	W-8368-GREEN	CONBRACO	W-8368-GREEN
=KH3-KH19	1	1/2" BALL VALVE, 2PC FULL PORT BRONZE W/LOCK - NPT	77-103-46	APOLLO	77-103-46
=KH3-KH19	1	1/4"~1/2" BALL VALVE HANDLE COVER, GREEN	W-8368-GREEN	CONBRACO	W-8368-GREEN
=KH3-KH20	1	1/2" BALL VALVE, 2PC FULL PORT BRONZE W/LOCK - NPT	77-103-46	APOLLO	77-103-46
=KH3-KH20	1	1/4"~1/2" BALL VALVE HANDLE COVER, GREEN	W-8368-GREEN	CONBRACO	W-8368-GREEN
=KH3-KH21	1	1/2" BALL VALVE, 2PC FULL PORT BRONZE W/LOCK - NPT	77-103-46	APOLLO	77-103-46
=KH3-KH21	1	1/4"~1/2" BALL VALVE HANDLE COVER, GREEN	W-8368-GREEN	CONBRACO	W-8368-GREEN
=KH3-KH22	1	1/2" BALL VALVE, 2PC FULL PORT BRONZE W/LOCK - NPT	77-103-46	APOLLO	77-103-46
=KH3-KH22	1	1/4"~1/2" BALL VALVE HANDLE COVER, GREEN	W-8368-GREEN	CONBRACO	W-8368-GREEN
=KH3-KH23	1	1/2" BALL VALVE, 2PC FULL PORT BRONZE W/LOCK - NPT	77-103-46	APOLLO	77-103-46
=KH3-KH23	1	1/4"~1/2" BALL VALVE HANDLE COVER, GREEN	W-8368-GREEN	CONBRACO	W-8368-GREEN
=KH3-KH24	1	1/2" BALL VALVE, 2PC FULL PORT BRONZE W/LOCK - NPT	77-103-46	APOLLO	77-103-46
=KH3-KH24	1	1/4"~1/2" BALL VALVE HANDLE COVER, GREEN	W-8368-GREEN	CONBRACO	W-8368-GREEN
=KH3-KH25	1	1/2" BALL VALVE, 2PC FULL PORT BRONZE W/LOCK - NPT	77-103-46	APOLLO	77-103-46
=KH3-KH25	1	1/4"~1/2" BALL VALVE HANDLE COVER, GREEN	W-8368-GREEN	CONBRACO	W-8368-GREEN
=KH3-KH26	1	1/2" BALL VALVE, 2PC FULL PORT BRONZE W/LOCK - NPT	77-103-46	APOLLO	77-103-46
=KH3-KH26	1	1/4"~1/2" BALL VALVE HANDLE COVER, GREEN	W-8368-GREEN	CONBRACO	W-8368-GREEN
=KH3-KH27	1	1/2" BALL VALVE, 2PC FULL PORT BRONZE W/LOCK - NPT	77-103-46	APOLLO	77-103-46
=KH3-KH27	1	1/4"~1/2" BALL VALVE HANDLE COVER, GREEN	W-8368-GREEN	CONBRACO	W-8368-GREEN
=KH3-KH28	1	1/2" BALL VALVE, 2PC FULL PORT BRONZE W/LOCK - NPT	77-103-46	APOLLO	77-103-46

&MFS=KH3/2

1.a


Date	11/23/2022	Volvo Trucks North America	Valiant TMS	Material specification	Drawing name:	=		
Ed.	MKLEPADLO	P6700 Bodyside RH - Robot Cell 2V10	Scale 1:1		=2V10&EFS-WATER	+ KH3		
Appr					Document type:	Project nr:	Page	1
Modification	Date	Name	Original	Replacement of	Replaced by	MPB	22-16150	7

Cable overview

F10_007 RCN WATER

Cable name	Source (from)	Target (to)	cable type	all conductors	Conductors used	Cross-section ["]	Length [m]	function text	Graphical page of cable diagram
=KH3-WN1			PIPE	1	0	2			
=KH3-WN2	=KH3+KH3-KH1	=KH3+KH3-KH2	PIPE	1	0	1 1/2			
=KH3-WN3	=KH3+KH3-HQ1	=KH3+KH3-KH3	PIPE	1	0	2			
=KH3-WN4	=KH3+KH3-KH14	=KH3+KH3-KH6	PIPE	1	0	2			
=KH3-WN5	=KH3+KH3-KH15	=KH3+KH3-KH7	PIPE	1	0	2			
=KH3-WN6	=KH3+KH3-BF2	=KH3+KH3-FL1	PIPE	1	0	2			
=KH3-WN7	=KH3+KH3-FL1	=KH3+KH3-KH8	PIPE	1	0	2			
=KH3-WN8	=KH3+KH3-KH9	=KH3+KH3-OUT	PIPE	1	0	2			
=KH3-WN9	=KH3+KH3-KH1	=KH3+KH3-KH9	PIPE	1	0	1 1/2			
=KH3-WN12	=KH3+KH3-KH11	=KH3+KH3-KH30	PIPE	1	0	2			
=KH3-WN14			83FR	1	0	1/2			
=KH3-WN15			83FR	1	0	1/2			
=KH3-WN16			83FR	1	0	1/2			
=KH3-WN17			83FR	1	0	1/2			
=KH3-WN18			83FR	1	0	1/2			
=KH3-WN19			83FR	1	0	1/2			
=KH3-WN20			83FR	1	0	1/2			
=KH3-WN21			83FR	1	0	1/2			
=KH3-WN22			83FR	1	0	1/2			
=KH3-WN23			83FR	1	0	1/2			
=KH3-WN24			83FR	1	0	1/2			
=KH3-WN25			83FR	1	0	1/2			
=KH3-WN26			83FR	1	0	1/2			
=KH3-WN27			83FR	1	0	1/2			
=KH3-WN28			83FR	1	0	1/2			
=KH3-WN29			83FR	1	0	1/2			
=KH3-WN30			83FR	1	0	1/2			
=KH3-WN31			83FR	1	0	1/2			
=KH3-WN32			83FR	1	0	1/2			
=KH3-WN33			83FR	1	0	1/2			
=KH3-WN34			83FR	1	0	1/2			
=KH3-WN35			83FR	1	0	1/2			

&MPB+KH3/1.a

Date	11/23/2022	Volvo Trucks North America		Valiant TMS	Cable overview : =KH3+KH3-WN1 - =KH3+KH3-WN35	Drawing name:	=	=2V10&EFS-WATER	Page	1
Ed.	MKLEPADLO	P6700 Bodyside RH - Robot Cell 2V10		Scale 1:1		Document type:	+			MMC
Modification	Date	Name	Original	Replacement of	Replaced by					