


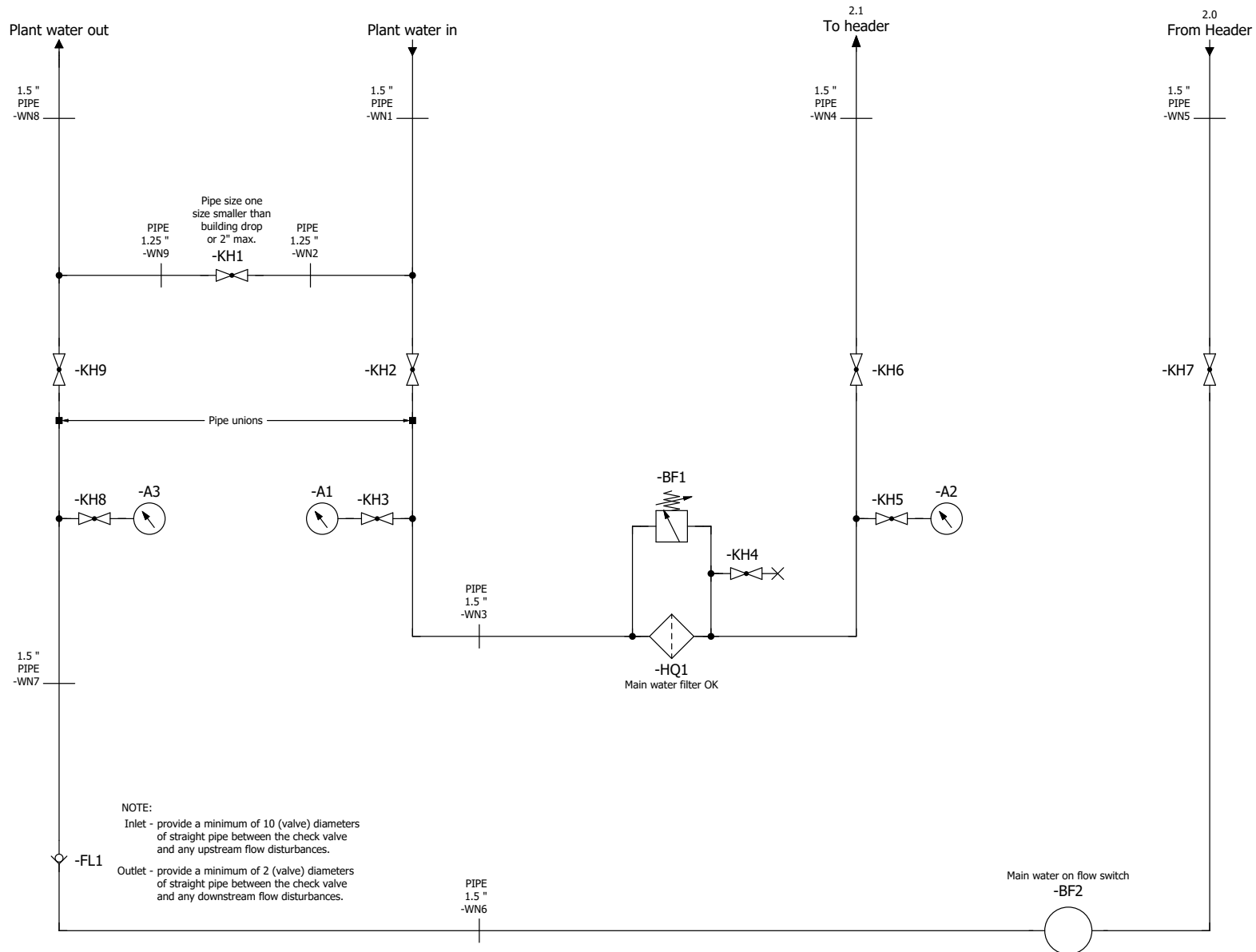


Valiant TMS



Company / customer	Volvo Trucks NA		
Project description	P6700 Bodyside Sub - Robot Cell 2V11		
drawing number	22-16149		
Commission	Volvo Trucks North America		
Manufacturer (company)	Valiant TMS		
Project name	=2V11&MFS-WATER		
Type	P6700 Bodyside Sub - Robot Cell 2V11		
Created on	4/12/2022		
Edit date	6/10/2022	by (short name) KMAFFRE	Number of pages 6

			Date	6/10/2022	Volvo Trucks North America		Valiant TMS		Title page / cover sheet	Drawing name:	=	
			Ed.	KMAFFRE							=2V11&EFS-WATER	+
Modification	Date	Name	Appr		P6700 Bodyside Sub - Robot Cell 2V11					Document type:	Project nr:	Page
			Original		Replacement of	Replaced by				MAA	22-16149	1
									Scale 1:1			6



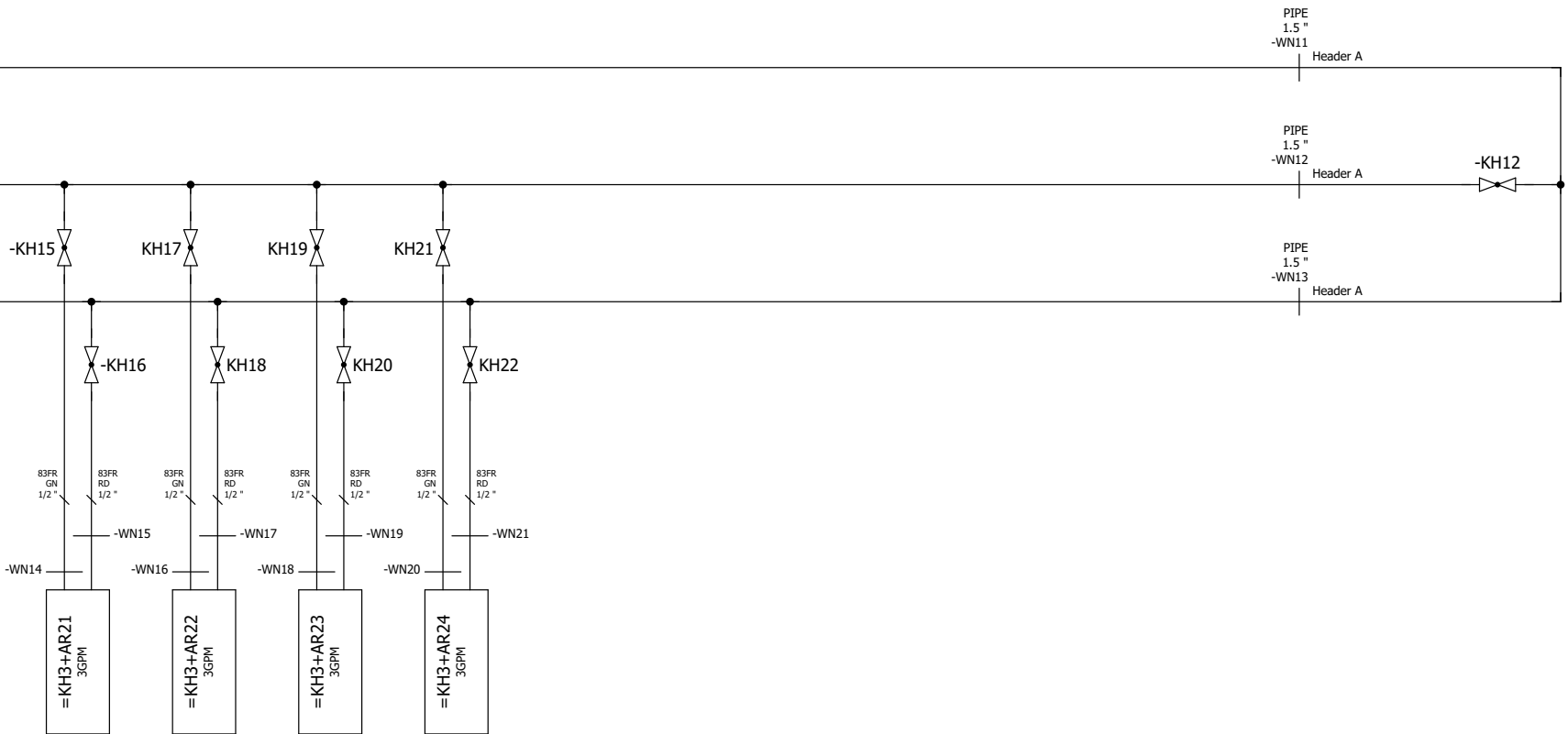
&MAB+/1

2

Date	6/10/2022	Volvo Trucks North America	Valiant TMS	Incoming water supply	Drawing name:	= 2V11&EFS-WATER	= KH3
Ed.	KMAFFRE				Document type:	MFS	+ KH3
Appr		P6700 Bodyside Sub - Robot Cell 2V11			Project nr:	22-16149	Page
Modification	Date	Name	Original	Replacement of	Replaced by	Scale 1:1	1
							6

1.8
Return to
plant header

1.6
Feed from
plant header



1

&MPB/1

Date	6/10/2022	Volvo Trucks North America	Valiant TMS	Water distribution	Drawing name:	= 2V11&EFS-WATER	= KH3
Ed.	KMAFFRE						+ KH3
Appr		P6700 Bodyside Sub - Robot Cell 2V11			Document type:	MFS	Project nr:
Modification	Date	Name	Original	Replacement of	Replaced by	Scale 1:1	22-16149
							Page 2
							6

Parts list

F01_001

Device tag	Quantity	Designation	Type number	Supplier	Part number
=KH3-A1	1	1/4" Pressure gauge, 0~100PSI 2-1/2" dial w/ABS case	25.110.100	NOSHOK	25.110.100
=KH3-A2	1	1/4" Pressure gauge, 0~100PSI 2-1/2" dial w/ABS case	25.110.100	NOSHOK	25.110.100
=KH3-A3	1	1/4" Pressure gauge, 0~100PSI 2-1/2" dial w/ABS case	25.110.100	NOSHOK	25.110.100
=KH3-BF1	1	Water differential pressure switch w/gage, 1/4 pt	DP-F-KIT	OMNI CONTROLS	DP-F-KIT
=KH3-BF2	1	Water flow switch, 1/2" NPT, PNP N.O., M12, Immersion Sensor	FCS-N1/2A4-AP8X-H1141	TURCK	TUR.FCS-N1/2A4-AP8X-H1141
=KH3-FL1	1	1-1/2" CHECK VALVE, IN LINE	61-107-01	CONBRACO	61-107-01
=KH3-HQ1	1	1-1/2" Water bag filter; NPT size 4, 50 GPM max flow	20403-004-1.5"	OMNI CONTROLS	20403-004-1.5"
=KH3-KH1	1	1-1/4" BALL VALVE, 2PC FULL PORT BRONZE W/LOCK - NPT	77-106-46	APOLLO	77-106-46
=KH3-KH1	1	1" ~ 1-1/4" BALL VALVE HANDLE COVER, GREEN	W-8372-GREEN	CONBRACO	W-8372-GREEN
=KH3-KH2	1	1-1/2" BALL VALVE, 2PC FULL PORT BRONZE W/LOCK - NPT	77-107-46	APOLLO	77-107-46
=KH3-KH2	1	1-1/2" ~ 2" BALL VALVE HANDLE COVER, GREEN	W-8374-GREEN	CONBRACO	W-8374-GREEN
=KH3-KH3	1	1/4" BALL VALVE, 2PC FULL PORT BRONZE - NPT	77-101-01	APOLLO	77-101-01
=KH3-KH3	1	1/4"~1/2" BALL VALVE HANDLE COVER, GREEN	W-8368-GREEN	CONBRACO	W-8368-GREEN
=KH3-KH4	1	1/4" BALL VALVE, 2PC FULL PORT BRONZE - NPT	77-101-01	APOLLO	77-101-01
=KH3-KH4	1	1/4"~1/2" BALL VALVE HANDLE COVER, GREEN	W-8368-GREEN	CONBRACO	W-8368-GREEN
=KH3-KH5	1	1/4" BALL VALVE, 2PC FULL PORT BRONZE - NPT	77-101-01	APOLLO	77-101-01
=KH3-KH5	1	1/4"~1/2" BALL VALVE HANDLE COVER, GREEN	W-8368-GREEN	CONBRACO	W-8368-GREEN
=KH3-KH6	1	1-1/2" BALL VALVE, 2PC FULL PORT BRONZE W/LOCK - NPT	77-107-46	APOLLO	77-107-46
=KH3-KH6	1	1-1/2" ~ 2" BALL VALVE HANDLE COVER, GREEN	W-8374-GREEN	CONBRACO	W-8374-GREEN
=KH3-KH7	1	1-1/2" BALL VALVE, 2PC FULL PORT BRONZE W/LOCK - NPT	77-107-46	APOLLO	77-107-46
=KH3-KH7	1	1-1/2" ~ 2" BALL VALVE HANDLE COVER, GREEN	W-8374-GREEN	CONBRACO	W-8374-GREEN
=KH3-KH8	1	1/4" BALL VALVE, 2PC FULL PORT BRONZE - NPT	77-101-01	APOLLO	77-101-01
=KH3-KH8	1	1/4"~1/2" BALL VALVE HANDLE COVER, GREEN	W-8368-GREEN	CONBRACO	W-8368-GREEN
=KH3-KH9	1	1-1/2" BALL VALVE, 2PC FULL PORT BRONZE W/LOCK - NPT	77-107-46	APOLLO	77-107-46
=KH3-KH9	1	1-1/2" ~ 2" BALL VALVE HANDLE COVER, GREEN	W-8374-GREEN	CONBRACO	W-8374-GREEN
=KH3-KH11	1	1-1/2" BALL VALVE, 2PC FULL PORT BRONZE W/LOCK - NPT	77-107-46	APOLLO	77-107-46
=KH3-KH11	1	1-1/2" ~ 2" BALL VALVE HANDLE COVER, GREEN	W-8374-GREEN	CONBRACO	W-8374-GREEN
=KH3-KH12	1	1-1/2" BALL VALVE, 2PC FULL PORT BRONZE W/LOCK - NPT	77-107-46	APOLLO	77-107-46
=KH3-KH12	1	1-1/2" ~ 2" BALL VALVE HANDLE COVER, GREEN	W-8374-GREEN	CONBRACO	W-8374-GREEN
=KH3-KH15	1	1/2" BALL VALVE, 2PC FULL PORT BRONZE W/LOCK - NPT	77-103-46	APOLLO	77-103-46
=KH3-KH15	1	1/4"~1/2" BALL VALVE HANDLE COVER, GREEN	W-8368-GREEN	CONBRACO	W-8368-GREEN
=KH3-KH16	1	1/2" BALL VALVE, 2PC FULL PORT BRONZE W/LOCK - NPT	77-103-46	APOLLO	77-103-46
=KH3-KH16	1	1/4"~1/2" BALL VALVE HANDLE COVER, GREEN	W-8368-GREEN	CONBRACO	W-8368-GREEN
=KH3-KH17	1	1/2" BALL VALVE, 2PC FULL PORT BRONZE W/LOCK - NPT	77-103-46	APOLLO	77-103-46
=KH3-KH17	1	1/4"~1/2" BALL VALVE HANDLE COVER, GREEN	W-8368-GREEN	CONBRACO	W-8368-GREEN
=KH3-KH18	1	1/2" BALL VALVE, 2PC FULL PORT BRONZE W/LOCK - NPT	77-103-46	APOLLO	77-103-46
=KH3-KH18	1	1/4"~1/2" BALL VALVE HANDLE COVER, GREEN	W-8368-GREEN	CONBRACO	W-8368-GREEN
=KH3-KH19	1	1/2" BALL VALVE, 2PC FULL PORT BRONZE W/LOCK - NPT	77-103-46	APOLLO	77-103-46
=KH3-KH19	1	1/4"~1/2" BALL VALVE HANDLE COVER, GREEN	W-8368-GREEN	CONBRACO	W-8368-GREEN
=KH3-KH20	1	1/2" BALL VALVE, 2PC FULL PORT BRONZE W/LOCK - NPT	77-103-46	APOLLO	77-103-46
=KH3-KH20	1	1/4"~1/2" BALL VALVE HANDLE COVER, GREEN	W-8368-GREEN	CONBRACO	W-8368-GREEN
=KH3-KH21	1	1/2" BALL VALVE, 2PC FULL PORT BRONZE W/LOCK - NPT	77-103-46	APOLLO	77-103-46
=KH3-KH21	1	1/4"~1/2" BALL VALVE HANDLE COVER, GREEN	W-8368-GREEN	CONBRACO	W-8368-GREEN
=KH3-KH22	1	1/2" BALL VALVE, 2PC FULL PORT BRONZE W/LOCK - NPT	77-103-46	APOLLO	77-103-46
=KH3-KH22	1	1/4"~1/2" BALL VALVE HANDLE COVER, GREEN	W-8368-GREEN	CONBRACO	W-8368-GREEN

&MFS=KH3/2

&MMC+/1

Date	6/10/2022	Volvo Trucks North America	Valiant TMS	Material specification	Drawing name:	=
Ed.	KMAFFRE					+ KH3
Appr		P6700 Bodyside Sub - Robot Cell 2V11			Document type:	Project nr:
Original		Replacement of	Replaced by		MPB	22-16149
Modification	Date	Name		Scale 1:1		Page 1
						6

