


Valiant TMS



Company / customer	Volvo Trucks NA	
Project description	P6700 Sub Floor Members	
drawing number	22-16146	
Commission	Volvo Trucks North America	
Manufacturer (company)	Valiant TMS	
Project name	=2V13&MFS-HYD	
Type	P6700 Sub Floor Members	
Created on	5/24/2023	
Edit date	6/5/2023	by (short name) MKLEPADLO
		Number of pages 14


Date	5/25/2023	Volvo Trucks North America		Valiant TMS	Title page / cover sheet	Drawing name:	=				
Ed.	MKLEPADLO	P6700 Sub Floor Members					Drawing name:	=			
Appr						Document type:	MAA	Project nr:	22-16146	Page	1
Modification	Date	Name	Original	Replacement of	Replaced by						14

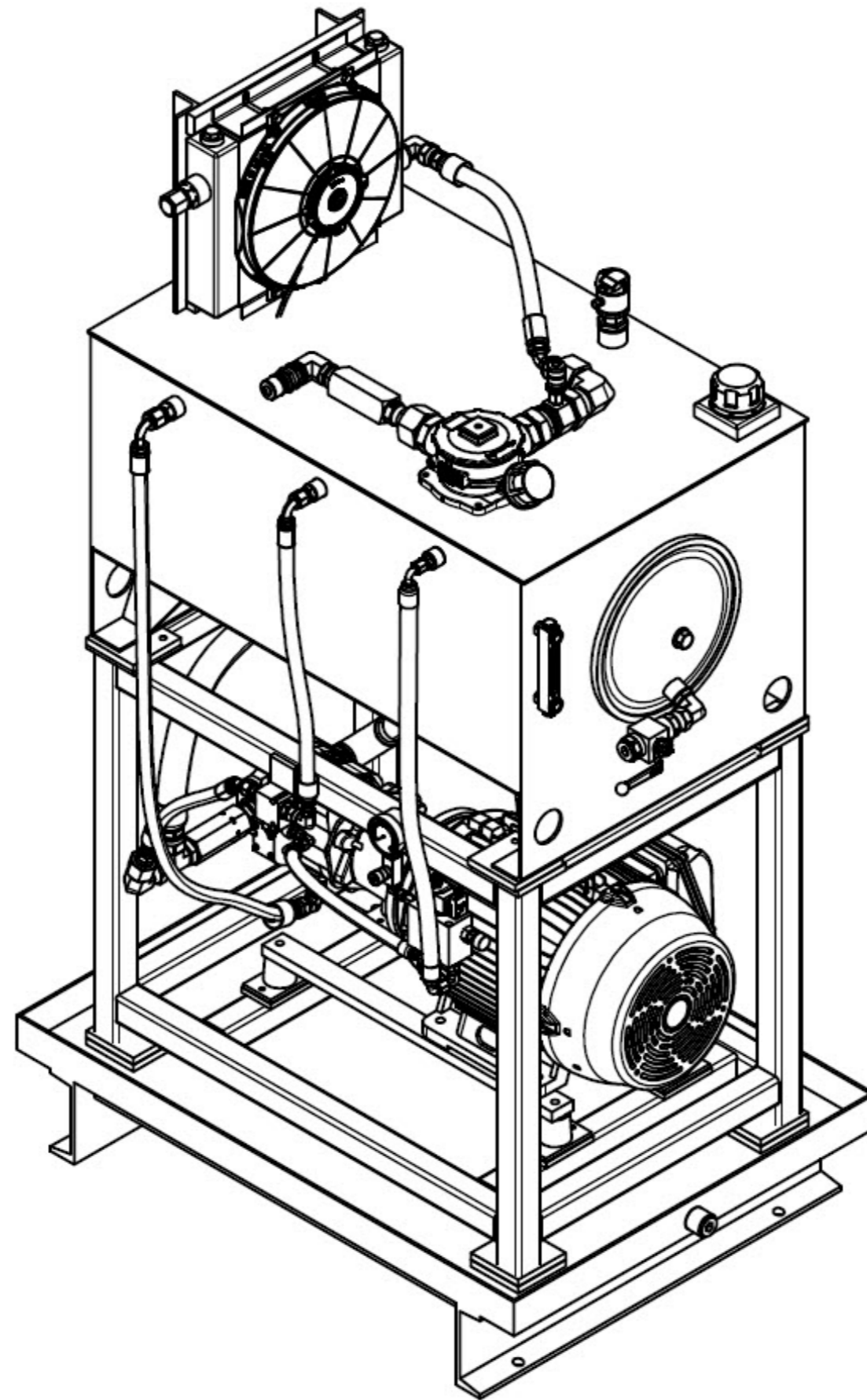
Table of contents

Column X: An automatically generated page was edited

F06_001


Page	Page description	supplementary page field	Date	Edited by	X
&MAA/1	Title page / cover sheet		5/25/2023	MKLEPADLO	
&MAB/1	Table of contents : &MAA/1 - &MAZ/2		5/25/2023	MKLEPADLO	
&MHL/1	HPU Layout		5/25/2023	MKLEPADLO	
&MHL/2	Pierce Unit Layout		5/25/2023	MKLEPADLO	
&MFS=V1UQ53+KH1/1	Incoming Hydraulic Supply (HPU Unit)		5/25/2023	MKLEPADLO	
&MFS=V1UQ53+KH1/2	Hydraulic Distribution		5/25/2023	MKLEPADLO	
&MFS=V1UQ53KH1+V1UQ53/11	Hydraulic Supply		5/25/2023	MKLEPADLO	
&MFS=V1UQ53MM1+V1UQ53/1	Pierce Unit 1		5/25/2023	MKLEPADLO	
&MFS=V1UQ53MM2+V1UQ53/1	Pierce Unit 2		5/25/2023	MKLEPADLO	
&MFS=V1UQ53MM3+V1UQ53/1	Spare		5/25/2023	MKLEPADLO	
&MPB+KH1/1	Parts list : PAR.BVHP16SSS1NA - PAR.C1620S		5/25/2023	MKLEPADLO	
&MPB+V1UQ53/1	Parts list : A-B.836P-D2NMGC58PA-D4 - DAM.DD03CPP		5/25/2023	MKLEPADLO	
&MAZ/1	Amendment page		5/25/2023	MKLEPADLO	
&MAZ/2	Amendment page		5/25/2023	MKLEPADLO	

HPU Unit Layout =V1UQ53

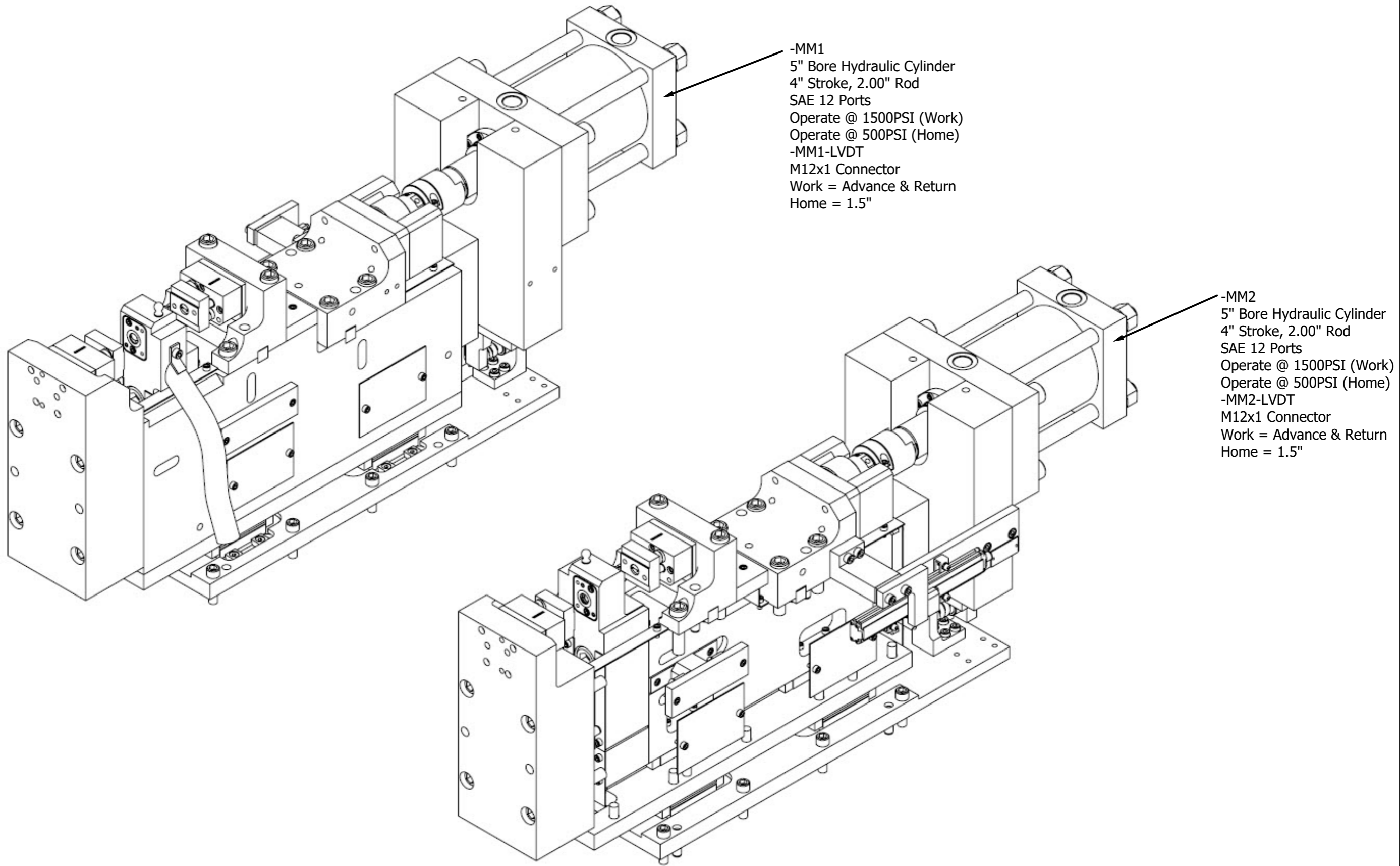


&MAB/1

2


		Date	5/25/2023	Volvo Trucks North America		Valiant TMS	HPU Layout	Drawing name:	=		
		Ed.	MKLEPADLO	P6700 Sub Floor Members					=2V13&MFS-HYD	+	
		Appr.						Document type:	Project nr:	Page	1
Modification	Date	Name	Original	Replacement of	Replaced by	Scale 1:1		MHL	22-16146		14

Pierce Unit Layout =V1UQ53

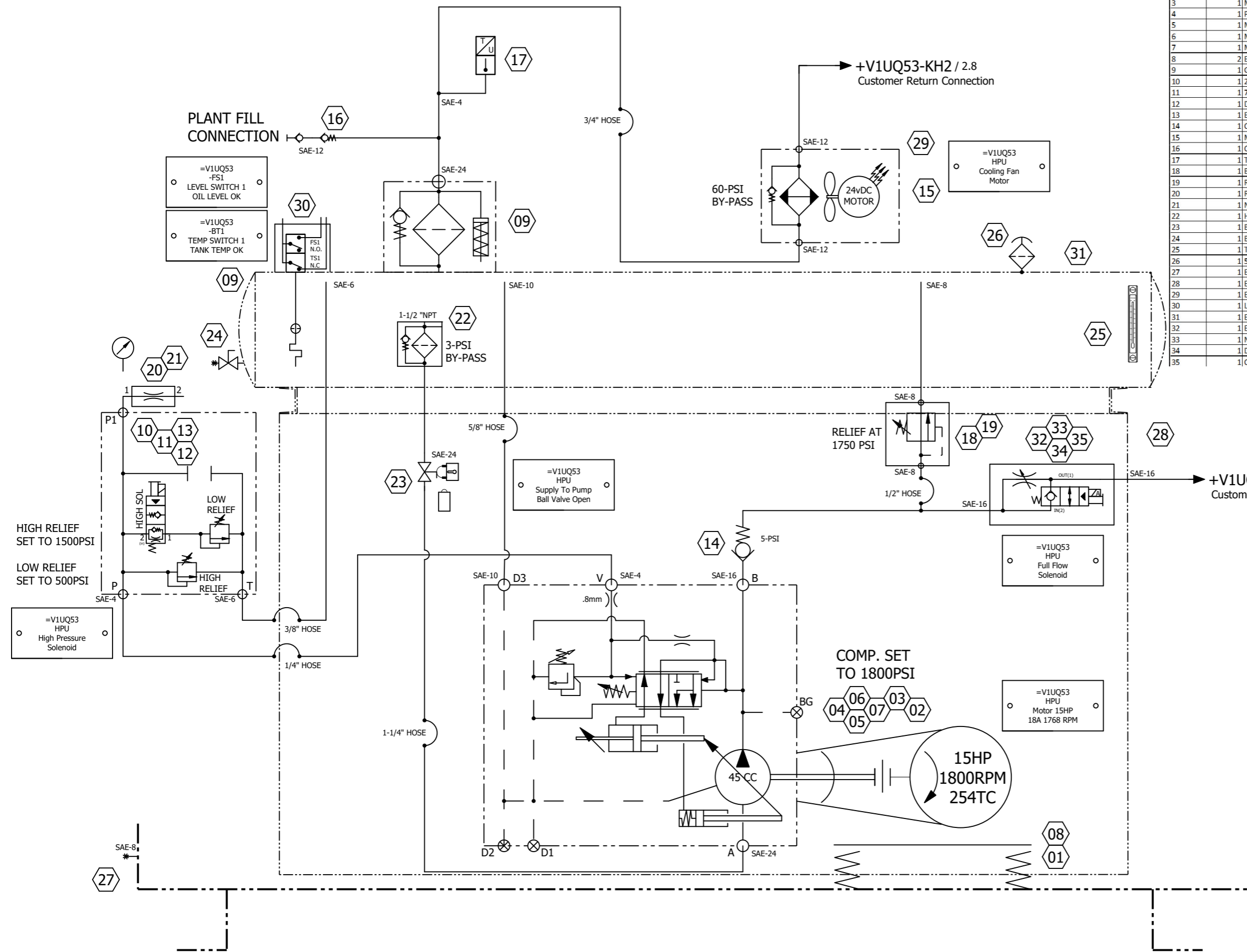


-MM1
 5" Bore Hydraulic Cylinder
 4" Stroke, 2.00" Rod
 SAE 12 Ports
 Operate @ 1500PSI (Work)
 Operate @ 500PSI (Home)
 -MM1-LVDT
 M12x1 Connector
 Work = Advance & Return
 Home = 1.5"

-MM2
 5" Bore Hydraulic Cylinder
 4" Stroke, 2.00" Rod
 SAE 12 Ports
 Operate @ 1500PSI (Work)
 Operate @ 500PSI (Home)
 -MM2-LVDT
 M12x1 Connector
 Work = Advance & Return
 Home = 1.5"

Date		5/25/2023	Volvo Trucks North America		 Valiant TMS Pierce Unit Layout	Drawing name:		=
Ed.		MKLEPADLO	P6700 Sub Floor Members			=2V13&MFS-HYD		+
Appr			Replacement of		Scale 1:1	Document type:	Project nr:	Page
Modification	Date	Name	Original	Replaced by		MHL	22-16146	2
								14

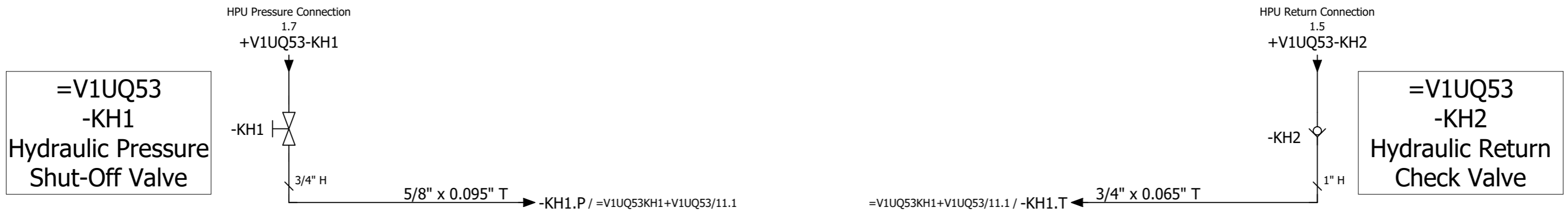
BTM Manufacturer Reference



ITEM	QTY	PART NUMBER	DESCRIPTION
1	4	4C991	SHOCK MOUNTS - SOUND & VIBRATION ISOLATION
2	1	01518ET3E254TC-W22	15 HP 3-PHASE ELECTRIC MOTOR
3	1	M30010008	PUMP COUPLER
4	1	PD045PS02SR55BAMOR1200000	PUMP - VARIABLE DISPLACEMENT 2.75 CIR/ADJUSTABLE SET TO 17.0-GPM @1800-RPM
5	1	M182682BM8	ADAPTER,PUMP/MOTOR,182/SAE-B,2/4 BOLT
6	1	M30012012	MOTOR COUPLER
7	1	M370H5	HYTREL INSERT
8	2	EPM0820377	MOUNT PAD, WELD DOWN, 256TC-MOUNT
9	1	GLF2110Q8PI25241	RETURN FILTER - SAE 24 PORTS
10	1	205745	VALVE, HYDRAULIC, 3/4"-16, RELIEF, CARTRIDGE
11	1	70000414210000000	ELECTRICAL CONNECTOR - 3-POLE TO 4-PIN M12
12	1	DSL081NRM	VALVE, HYDRAULIC, C08-2, CARTRIDGE
13	1	EPM1420998	REMOTE COMPENSATOR WITH LOW PRESSURE STANDBY
14	1	C16205	CHECKVALVE WITH RETURN FLOW BYPASS 5 PSI
15	1	MA-18-2-48-60	FAN-FORCED AIR BRUSHLESS 24VDC MOTOR HEAT EXCHANGER
16	1	C12205	VALVE, CHECK, COLORFLOW
17	1	TK7310	TEMPERATURE SENSOR NO OUTPUTS 500 MA
18	1	B10-2-8T	STANDARD RELIEF BODY
19	1	RAH101S30	OVER-PRESSURE RELIEF VALVE SET AT 2,300 PSI
20	1	RN001-200	GAUGE, PRESSURE, 2.5" DIAL, 1/4" NPT BOTTOM CONNECT
21	1	N4005	VALVE, HYDRAULIC, NEEDLE, GAUGE SNUBBER
22	1	HA-FS-30-RV3	SUCTION STRAINER - VARIABLE PUMP 1-1/4 INCH W/BY-PASS
23	1	BVAL1500S4321AZZN	INLET SUCTION BALL VALVE - 1-1/4 INCH SAE W/HANDLE & LOCK OUT BRACKET
24	1	BVAL-0750N-4321	LOCKABLE BALL VALVE
25	1	TEMP/LEVEL GAUGE	TEMP/LEVEL GAUGE
26	1	5201	BREATHER
27	1	EPM2217710-1	50-GALLON DRIP STAND
28	1	EPM2217709	STACK FRAME 2x2 BOX TUBE
29	1	EPM2217744	HEAT EXCHANGER MOUNT
30	1	LK7022	FLUID LEVEL SWITCH
31	1	EPM2217708	50-GALLON JIC RESERVOIR
32	1	EPM2217260	SPEED CONTROL MANIFOLD
33	1	NVH101S	NEEDLE VALVE FOR FLOW CONTROL
34	1	DSH101CR	2-WAY 2-POSITION VALVE
35	1	CAS024D	24VDC COIL


&MHL+/2

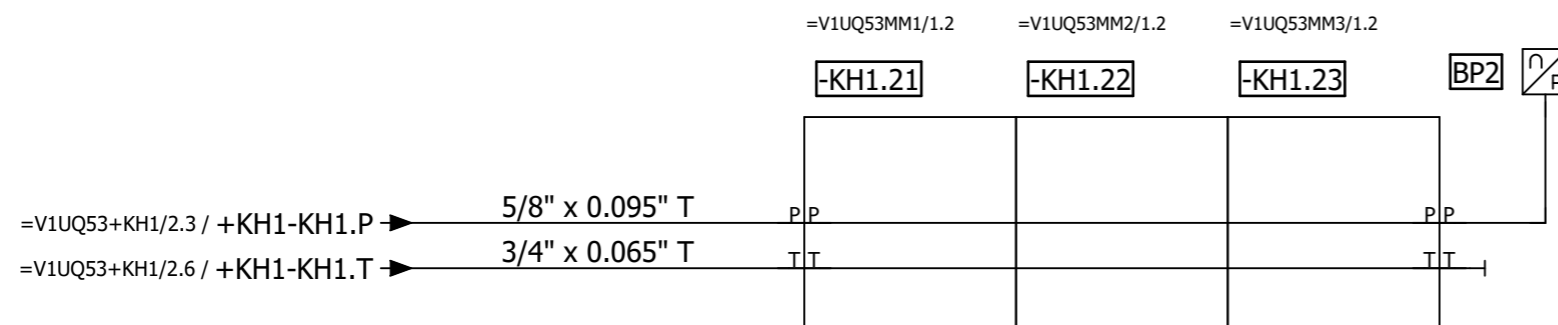
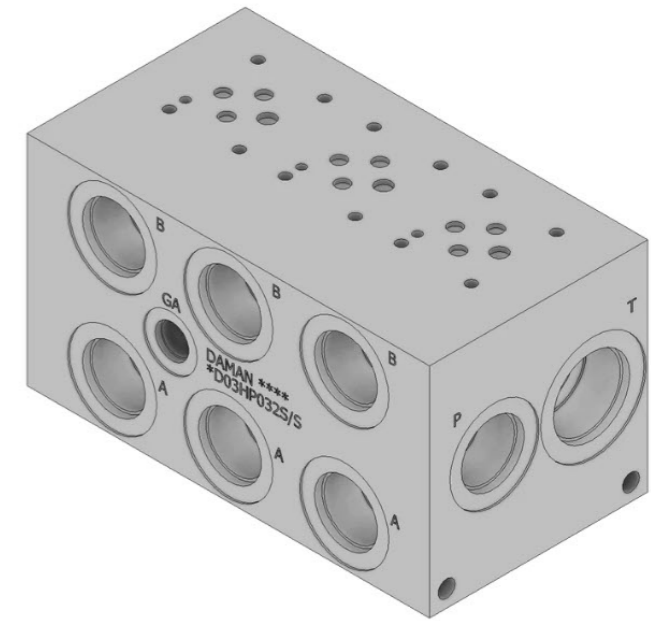
Date	6/5/2023	Volvo Trucks North America	Valiant TMS	Incoming Hydraulic Supply (HPU Unit)	Drawing name:	= V1UQ53
Ed.	MKLEPADLO				=2V13&MFS-HYD	+ KH1
Appr		P6700 Sub Floor Members			Document type:	Project nr:
Modification	Date	Name	Original	Replaced by	MFS	22-16146
				Scale 1:1		Page 1
						14



1

=V1UQ53KH1+V1UQ53/11

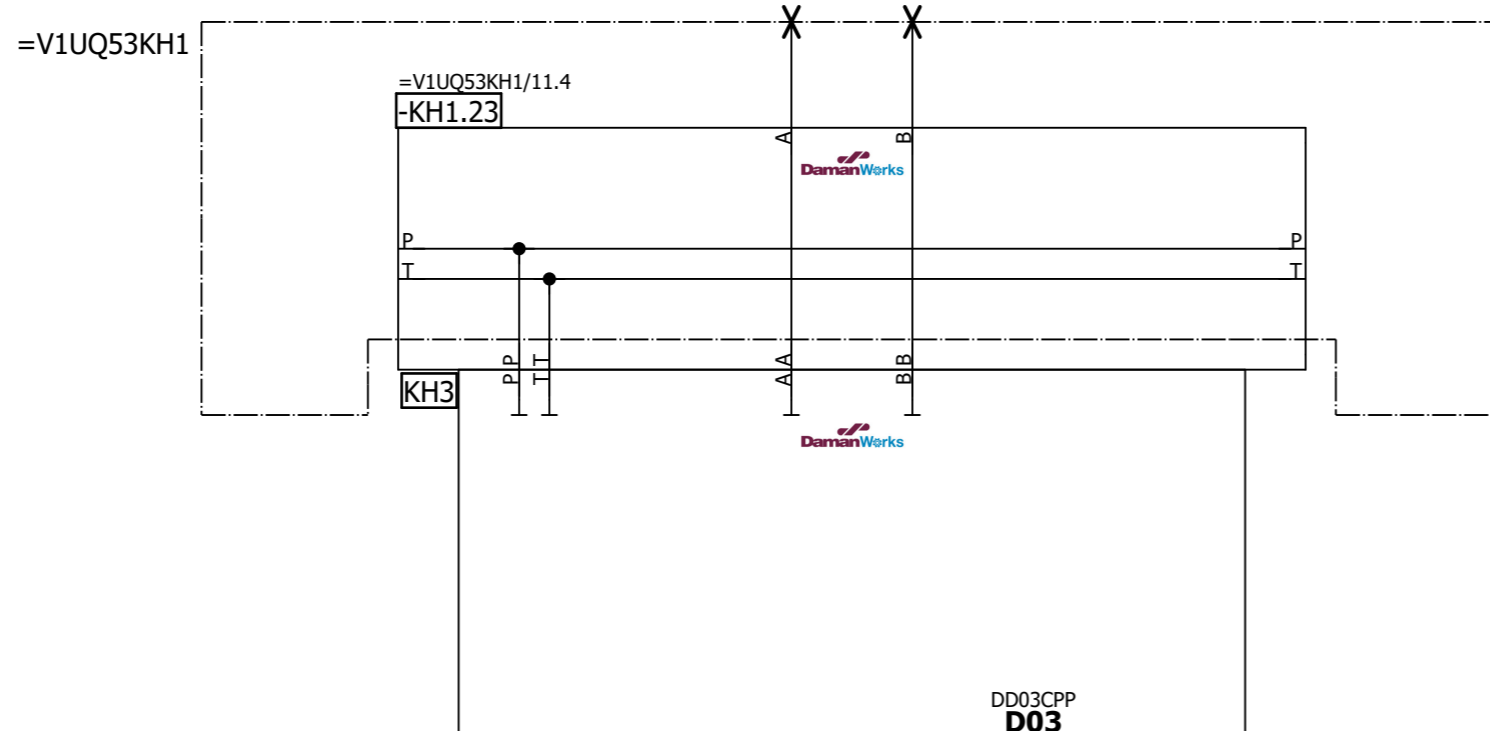
Date		6/5/2023		Volvo Trucks North America			Valiant TMS		Hydraulic Distribution		Drawing name:		= V1UQ53	
Ed.		MKLEPADLO		P6700 Sub Floor Members			Scale 1:1				Document type:		=2V13&MFS-HYD	
Appr				Replacement of		Replaced by				Project nr:		22-16146		
Modification	Date	Name	Original							MFS		Page 2		
												14		




=V1UQ53+KH1/2

=V1UQ53MM1/1

Date		6/3/2023		Volvo Trucks North America		Valiant TMS		Hydraulic Supply		Drawing name:		= V1UQ53KH1	
Ed.		MKLEPADLO		P6700 Sub Floor Members		Scale 1:1				Document type:		= 2V13&MFS-HYD	
Appr.				Replacement of		Replaced by				Project nr:		22-16146	
Modification	Date	Name	Original							MFS		Page 11	
												14	



		Date	6/3/2023	Volvo Trucks North America			Valiant TMS	Spare	Drawing name:		= V1UQ53MM3
		Ed.	MKLEPADLO	P6700 Sub Floor Members						=2V13&MFS-HYD	
		Appr		Replacement of			Scale 1:1		Document type:	Project nr:	Page
Modification	Date	Name	Original	Replaced by					MFS	22-16146	1
											14

