

0

1

2

3

4

5

6

7

8

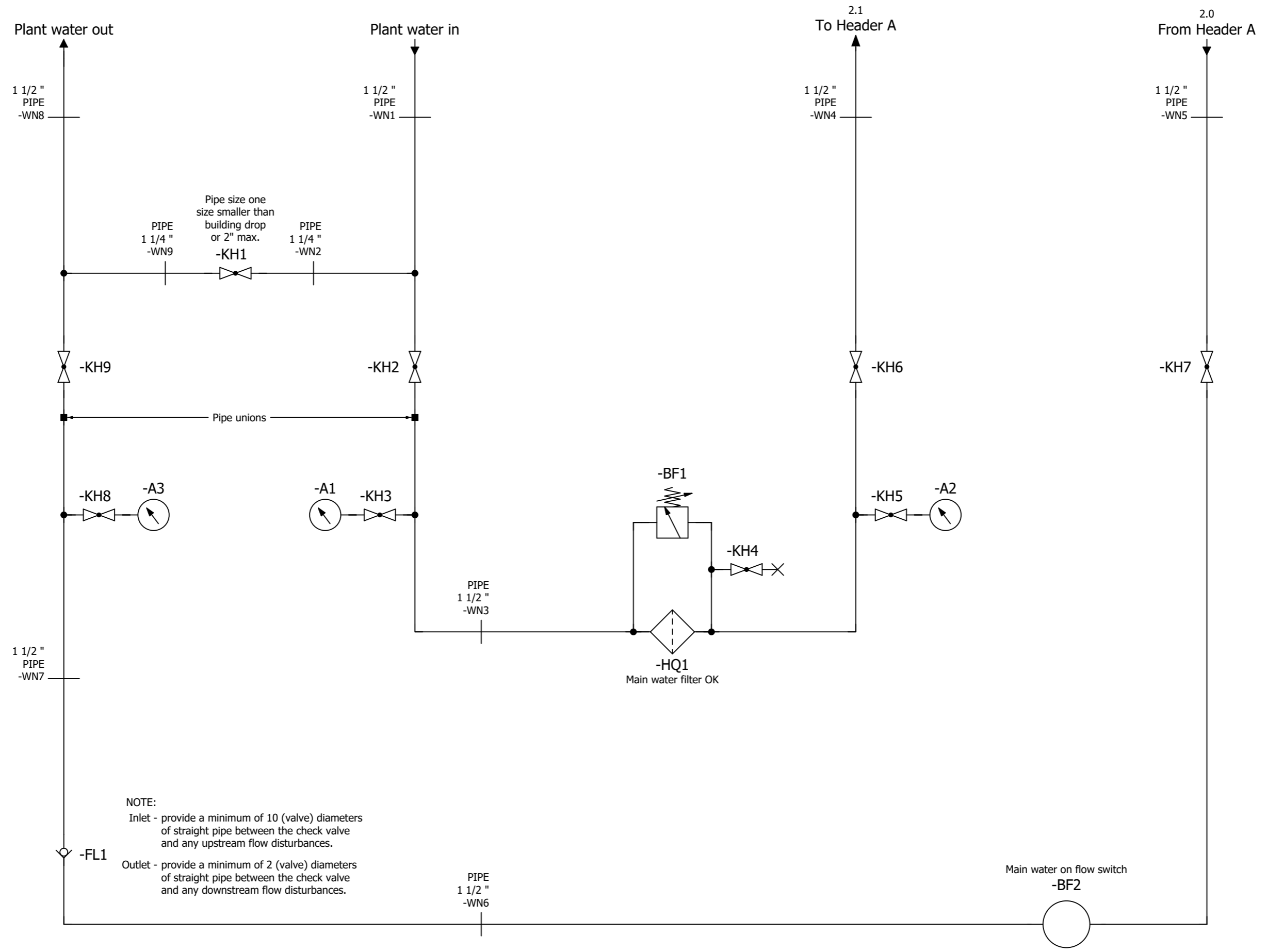
9

Table of contents

Column X: An automatically generated page was edited

F06_001

Page	Page description	supplementary page field	Date	Edited by	X
&MAA/1	Title page / cover sheet		9/28/2022	MKLEPADLO	
&MAB/1	Table of contents		9/28/2022	MKLEPADLO	
&MFS=KH3+KH3/1	Incoming water supply		9/28/2022	MKLEPADLO	
&MFS=KH3+KH3/2	Water distribution		9/28/2022	MKLEPADLO	
&MPB+KH3/1	Material specification		9/28/2022	MKLEPADLO	
&MMC/1	Cable overview : =KH3+KH3-WN1 - =KH3+KH3-WN21		9/28/2022	MKLEPADLO	



&MAB+/1

2

		Date	9/28/2022	Volvo Trucks North America		Valiant TMS	Incoming water supply	Drawing name:	= 2V13&EFS-WATER	= KH3	
		Ed.	MKLEPADLO	P6700 Sub Floor Members		Scale 1:1			Document type:	MFS	+ KH3
Modification	Date	Name	Original	Replacement of	Replaced by			Project nr:	22-16146	Page	1
											6

Parts list

F01_001

Device tag	Quantity	Designation	Type number	Supplier	Part number
=KH3-A1	1	1/4" Pressure gauge, 0~100PSI 2-1/2" dial w/ABS case	25.110.100	NOSHOK	25.110.100
=KH3-A2	1	1/4" Pressure gauge, 0~100PSI 2-1/2" dial w/ABS case	25.110.100	NOSHOK	25.110.100
=KH3-A3	1	1/4" Pressure gauge, 0~100PSI 2-1/2" dial w/ABS case	25.110.100	NOSHOK	25.110.100
=KH3-BF1	1	Water differential pressure switch w/gage, 1/4 pt	DP-F-KIT	OMNI CONTROLS	DP-F-KIT
=KH3-BF2	1	Water flow switch, 1/2" NPT, PNP N.O., M12, Immersion Sensor	FCS-N1/2A4-AP8X-H1141	TURCK	TUR.FCS-N1/2A4-AP8X-H1141
=KH3-FL1	1	1-1/2" CHECK VALVE, IN LINE	61-107-01	CONBRACO	61-107-01
=KH3-HQ1	1	1-1/2" Water bag filter; NPT size 2, 200 GPM max flow	20403-001-1.5"	OMNI CONTROLS	20403-001-1.5"
=KH3-KH1	1	1-1/4" BALL VALVE, 2PC FULL PORT BRONZE W/LOCK - NPT	77-106-46	APOLLO	77-106-46
=KH3-KH1	1	1" ~ 1-1/4" BALL VALVE HANDLE COVER, RED	W-8372-RED	CONBRACO	W-8372-RED
=KH3-KH2	1	1-1/2" BALL VALVE, 2PC FULL PORT BRONZE W/LOCK - NPT	77-107-46	APOLLO	77-107-46
=KH3-KH2	1	1-1/2" ~ 2" BALL VALVE HANDLE COVER, GREEN	W-8374-GREEN	CONBRACO	W-8374-GREEN
=KH3-KH3	1	1/4" BALL VALVE, 2PC FULL PORT BRONZE - NPT	77-101-01	APOLLO	77-101-01
=KH3-KH3	1	1/4"~1/2" BALL VALVE HANDLE COVER, GREEN	W-8368-GREEN	CONBRACO	W-8368-GREEN
=KH3-KH4	1	1/4" BALL VALVE, 2PC FULL PORT BRONZE - NPT	77-101-01	APOLLO	77-101-01
=KH3-KH4	1	1/4"~1/2" BALL VALVE HANDLE COVER, GREEN	W-8368-GREEN	CONBRACO	W-8368-GREEN
=KH3-KH5	1	1/4" BALL VALVE, 2PC FULL PORT BRONZE - NPT	77-101-01	APOLLO	77-101-01
=KH3-KH5	1	1/4"~1/2" BALL VALVE HANDLE COVER, GREEN	W-8368-GREEN	CONBRACO	W-8368-GREEN
=KH3-KH6	1	1-1/2" BALL VALVE, 2PC FULL PORT BRONZE W/LOCK - NPT	77-107-46	APOLLO	77-107-46
=KH3-KH6	1	1-1/2" ~ 2" BALL VALVE HANDLE COVER, GREEN	W-8374-GREEN	CONBRACO	W-8374-GREEN
=KH3-KH7	1	1-1/2" BALL VALVE, 2PC FULL PORT BRONZE W/LOCK - NPT	77-107-46	APOLLO	77-107-46
=KH3-KH7	1	1-1/2" ~ 2" BALL VALVE HANDLE COVER, GREEN	W-8374-GREEN	CONBRACO	W-8374-GREEN
=KH3-KH8	1	1/4" BALL VALVE, 2PC FULL PORT BRONZE - NPT	77-101-01	APOLLO	77-101-01
=KH3-KH8	1	1/4"~1/2" BALL VALVE HANDLE COVER, GREEN	W-8368-GREEN	CONBRACO	W-8368-GREEN
=KH3-KH9	1	1-1/2" BALL VALVE, 2PC FULL PORT BRONZE W/LOCK - NPT	77-107-46	APOLLO	77-107-46
=KH3-KH9	1	1-1/2" ~ 2" BALL VALVE HANDLE COVER, GREEN	W-8374-GREEN	CONBRACO	W-8374-GREEN
=KH3-KH11	1	1-1/2" BALL VALVE, 2PC FULL PORT BRONZE W/LOCK - NPT	77-107-46	APOLLO	77-107-46
=KH3-KH11	1	1-1/2" ~ 2" BALL VALVE HANDLE COVER, GREEN	W-8374-GREEN	CONBRACO	W-8374-GREEN
=KH3-KH14	1	1/2" BALL VALVE, 2PC FULL PORT BRONZE W/LOCK - NPT	77-103-46	APOLLO	77-103-46
=KH3-KH14	1	1/4"~1/2" BALL VALVE HANDLE COVER, GREEN	W-8368-GREEN	CONBRACO	W-8368-GREEN
=KH3-KH15	1	1/2" BALL VALVE, 2PC FULL PORT BRONZE W/LOCK - NPT	77-103-46	APOLLO	77-103-46
=KH3-KH15	1	1/4"~1/2" BALL VALVE HANDLE COVER, GREEN	W-8368-GREEN	CONBRACO	W-8368-GREEN
=KH3-KH16	1	1/2" BALL VALVE, 2PC FULL PORT BRONZE W/LOCK - NPT	77-103-46	APOLLO	77-103-46
=KH3-KH16	1	1/4"~1/2" BALL VALVE HANDLE COVER, GREEN	W-8368-GREEN	CONBRACO	W-8368-GREEN
=KH3-KH17	1	1/2" BALL VALVE, 2PC FULL PORT BRONZE W/LOCK - NPT	77-103-46	APOLLO	77-103-46
=KH3-KH17	1	1/4"~1/2" BALL VALVE HANDLE COVER, GREEN	W-8368-GREEN	CONBRACO	W-8368-GREEN
=KH3-KH18	1	1/2" BALL VALVE, 2PC FULL PORT BRONZE W/LOCK - NPT	77-103-46	APOLLO	77-103-46
=KH3-KH18	1	1/4"~1/2" BALL VALVE HANDLE COVER, GREEN	W-8368-GREEN	CONBRACO	W-8368-GREEN
=KH3-KH19	1	1/2" BALL VALVE, 2PC FULL PORT BRONZE W/LOCK - NPT	77-103-46	APOLLO	77-103-46
=KH3-KH19	1	1/4"~1/2" BALL VALVE HANDLE COVER, GREEN	W-8368-GREEN	CONBRACO	W-8368-GREEN
=KH3-KH20	1	1/2" BALL VALVE, 2PC FULL PORT BRONZE W/LOCK - NPT	77-103-46	APOLLO	77-103-46
=KH3-KH20	1	1/4"~1/2" BALL VALVE HANDLE COVER, GREEN	W-8368-GREEN	CONBRACO	W-8368-GREEN
=KH3-KH21	1	1/2" BALL VALVE, 2PC FULL PORT BRONZE W/LOCK - NPT	77-103-46	APOLLO	77-103-46
=KH3-KH21	1	1/4"~1/2" BALL VALVE HANDLE COVER, GREEN	W-8368-GREEN	CONBRACO	W-8368-GREEN

&MFS=KH3/2

&MMC+/1

Date	9/28/2022	Volvo Trucks North America	Valiant TMS	Material specification	Drawing name:	=		
Ed.	MKLEPADLO	P6700 Sub Floor Members	Scale 1:1		=2V13&EFS-WATER	+ KH3		
Appr					Document type:	Project nr:	Page	1
Modification	Date	Name	Original	Replacement of	Replaced by	MPB	22-16146	6



