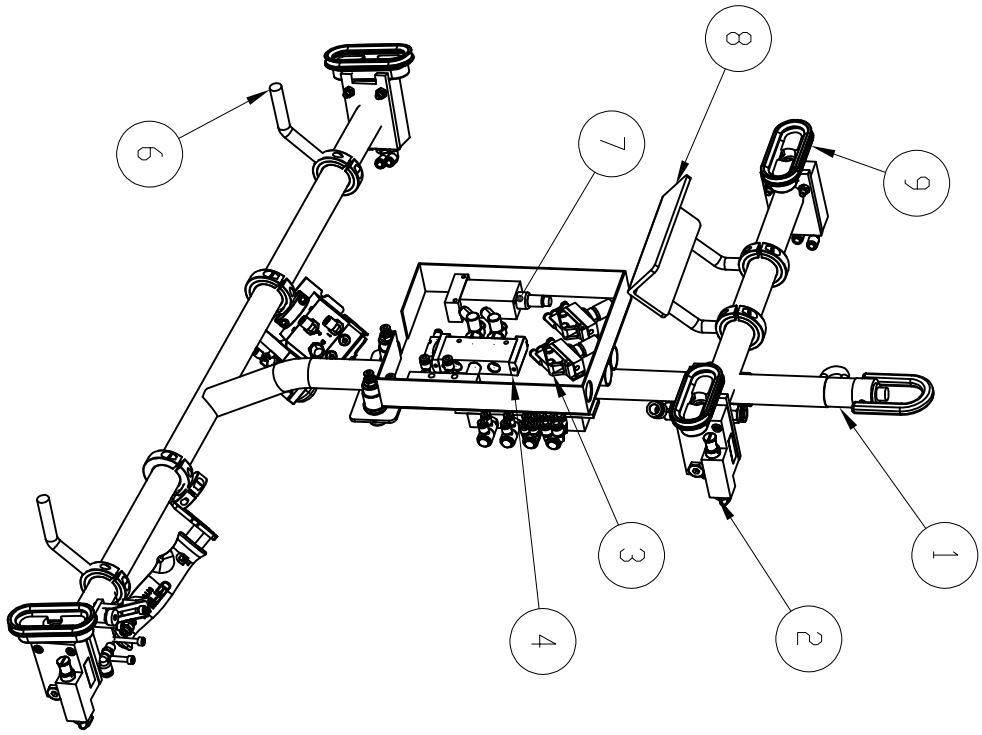
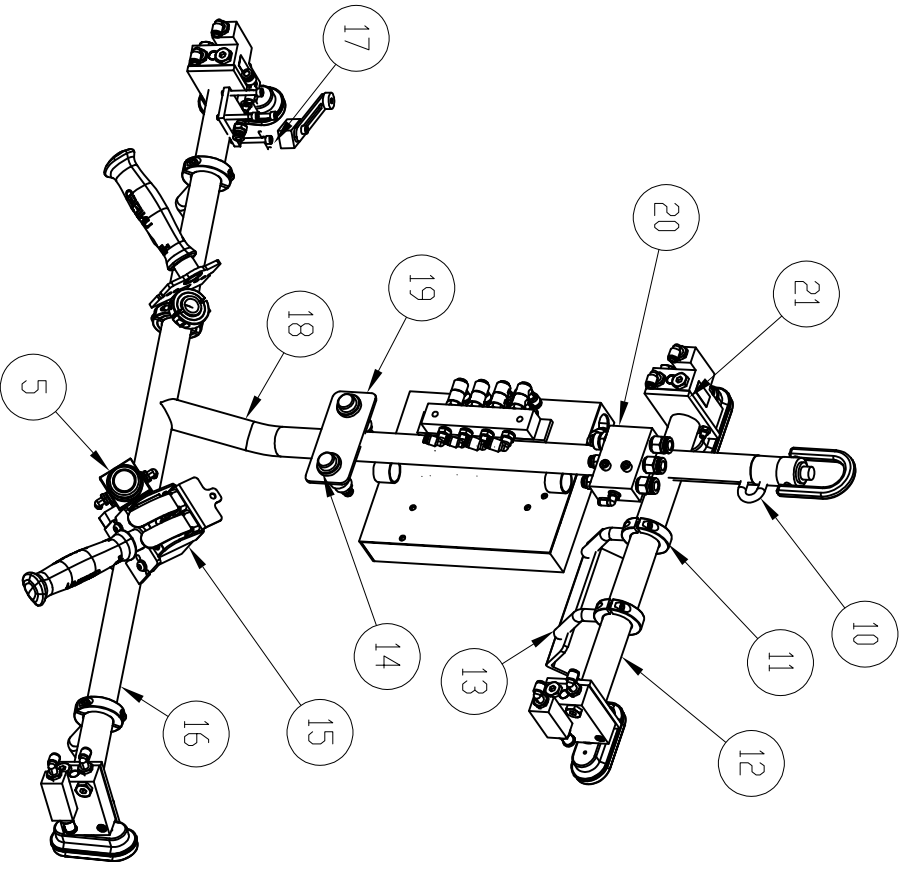


QTY.	MATERIAL	QTY
1	1.25" ROUND BAR 44W, LENGTH: 1.25"	1
2	PIAB VAC CHECK VALVE (PT# X1041 VT1)	4
3	PIAB VACUSTAT (PT# 31.16.063)	2
4	SMC VALVE (PT# SYA7120-02T)	1
5	BUTTON SWITCH (VM130-N01-33A)	1
6	1/2" DIA. ROUND BAR 44W HARDENED TO 52-58 RC. LENGTH: 4"	2
7	CRUZET MANDSTAT (PT# 80-502-160) & BASES (PT# 81-532-001)	1
8	2" X 2" X 3/16" ANGLE IRON HARDENED TO 52-58 RC. LENGTH: 6"	1
9	PIAB VAC CUP (PT# BF110P,SE,G40M)	4
10	5/16" GRADE 100 CHAIN LINK MODIFIED	1
11	1.25" DOUBLE SPLIT COLLARS	6
12	1.25" DIA. X 0.085" AISI 4130 ALLOY STEEL. LENGTH: 14.0"	1
13	1/2" DIA. ROUND BAR 44W HARDENED TO 52-58 RC. LENGTH: 3"	2
14	GREEN LIGHT (PT# VR3100-N01G)	2
15	UNIFIED PENDANT (PT# 99028)	1
16	1.25" DIA. X 0.085" AISI 4130 ALLOY STEEL. LENGTH: 34.0"	1
17	SMC SWITCH (PT# NVM830-N01-13)	1
18	1.25" DIA. X 0.085" AISI 4130 ALLOY STEEL. LENGTH: 30.0"	1
19	2" X 1/8" FLAT PLATE 44W. LENGTH: 4.50"	1
20	MANIFOLD	1
21	2-1/16 X 1/4" FLAT BAR 44W. LENGTH: 3.50"	4



GENERAL NOTES:  
 1. ALL WORK TO COMPLY WITH THE LATEST EDITION OF THE FOLLOWING:  
 • 16-01 LIMIT STATES DESIGN FOR STEEL STRUCTURES  
 • THE OCCUPATIONAL HEALTH AND SAFETY ACT REGULATIONS FOR INDUSTRIAL ESTABLISHMENTS (R.R.D. 1990, REG. 851)  
 • ASME B30.20 BELOW THE HOOK LIFTING DEVICES  
 2. STRUCTURAL STEEL  
 • FLAT & ROUND BAR: CSA G40.21  
 • TUBE: CSA G40.21 GRADE 350W (50W)  
 • PLATE: CSA G40.21 GRADE 300W (44W)  
 3. TUBE BENDING  
 • ALL TUBE BENDING SHALL BE CARRIED OUT WITH A POWERED HANDELL BENDER  
 • MIN BEND RADIUS FOR:  
 7/8" DIA - 18" R  
 1" DIA - 263" RAD  
 1 1/4" DIA - 322 RAD  
 4. WELDING SHALL CONFORM WITH THE LATEST REVISION OF THE FOLLOWING STANDARDS:  
 • SCA W471-09, W48-06 (R2011) & W59-13  
 • ELECTRODES SHALL BE E49XX (E70XX)  
 • MINIMUM 1/8" CONTINUOUS FILLET OR CJP BUTT WELDS UNLD.  
 5. BOLTING:  
 • ALL BOLTS SHALL BE SAE J429 GR 5 MINIMUM.  
 6. CAP ALL OPEN ENDS. REMOVE ALL BURRS & SHARP CORNERS  
 7. LIPAS  
 • PART: 60 lbs  
 • TOOL: 32 lbs  
 • IMPACT FACTOR: 125 DBS 415J11(1)  
 8. ALLOWABLE STRESS: F=ALL-FY/3 ASME B30.20 S20-12.2  
 9. DRAWING IS FOR STRUCTURAL REVIEW ONLY

**COLTECH DESIGN INC.**  
 1180 MIDWAY BLVD., U6  
 MISSISSAUGA, ONT.

DO NOT MAKE MANUAL CHANGES

UNLESS OTHERWISE SPECIFIED THIS DOCUMENT IS IN ACCORDANCE WITH ASME Y14.5M - 1994 AS AMENDED BY THE GLOBAL DIMENSIONING AND TOLERANCING ADDENDUM-1997

UNLESS OTHERWISE SPECIFIED DIM'S ARE IN INCHES

UNLESS OTHERWISE SPECIFIED THIS DOCUMENT IS IN ACCORDANCE WITH ASME Y14.5M - 1994 AS AMENDED BY THE GLOBAL DIMENSIONING AND TOLERANCING ADDENDUM-1997

PLANE OF PROJECTION NEEDS TO BE MARKED BY A DIRECTION ARROW.

N. PART	P. LEC	P. DATE
DRAWING NO.	LEC.	DATE (MM/YY)

ENGINEERING PRINTS USED

PLANT	DEPT. NO.	SCALE
---	---	---
DRW. NO.	REV. NO.	STATION
10278-1	---	---

DESCRIPTION: LHD PARTS FROM LINE TO BACK

PART NAME: DRIVER SIDE TRUCK DOOR

PART NO.	REV.
---	---

DESIGNED BY: R. ROUX	DATE: (YYYYMMDD) 2023122
DRAWN BY: RR & RA	DATE: (YYYYMMDD) 2023122
CHECKED BY: C. ARTHUR	DATE: (YYYYMMDD) 2023122
ENG. APPROVED: D. LUCIER	DATE: (YYYYMMDD) 20240103

SHEET SIZE: CAD  
 SHEETS: 01 OF 02  
 WORK ORDER NO. 20240103  
 DRAWING NO. 10278-1  
 SAFETY ITEM TYPE: ASSY

SAFETY HAS BEEN GIVEN CONSIDERATION IN THIS DESIGN

DO NOT SCALE DRAWING

BREAK OR DEBURR EDGES UNLESS OTHERWISE SPECIFIED ACCORDING TO KNOWLEDGE AND EXPERIENCE OF MANUFACTURER