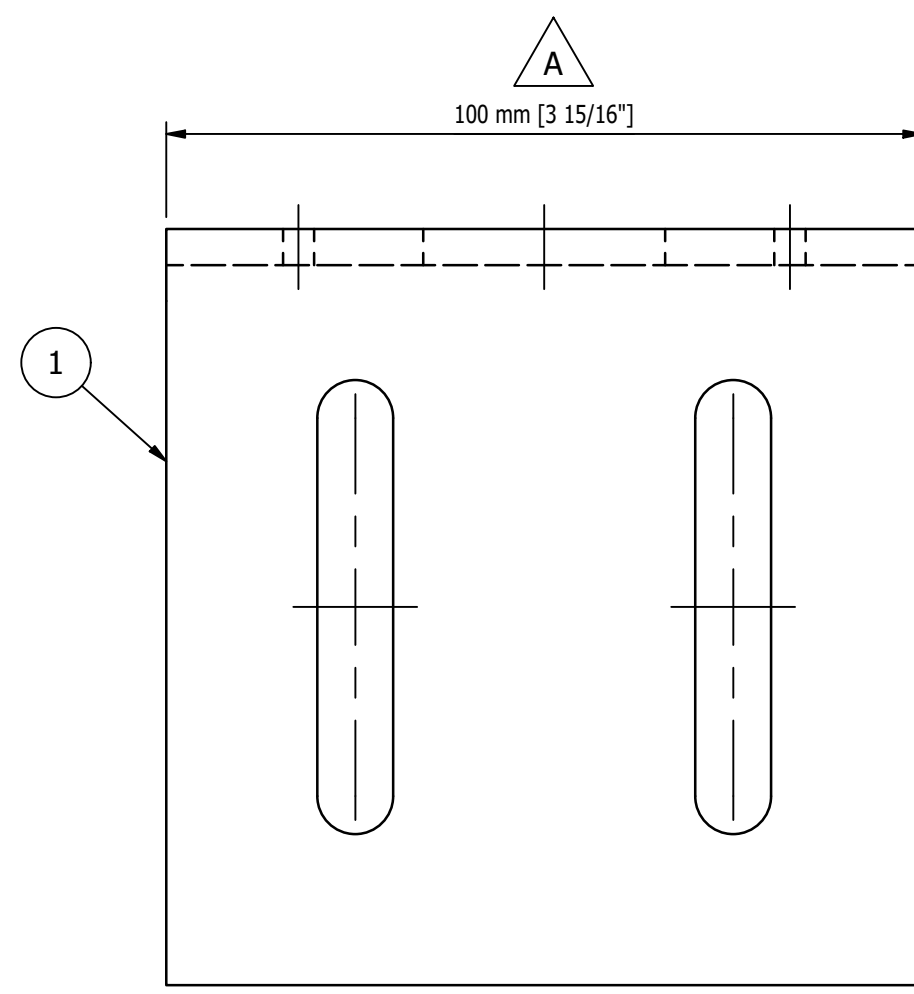
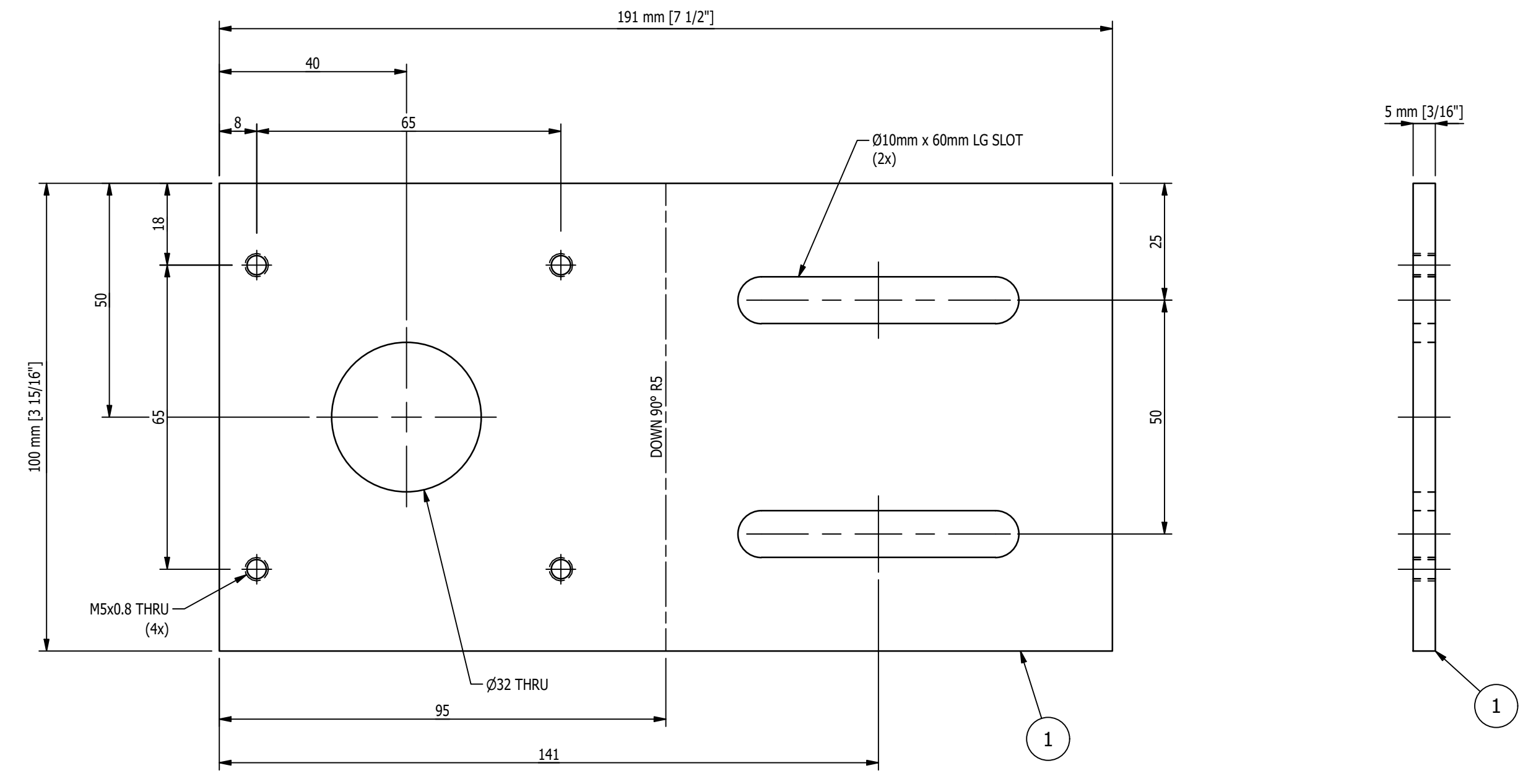
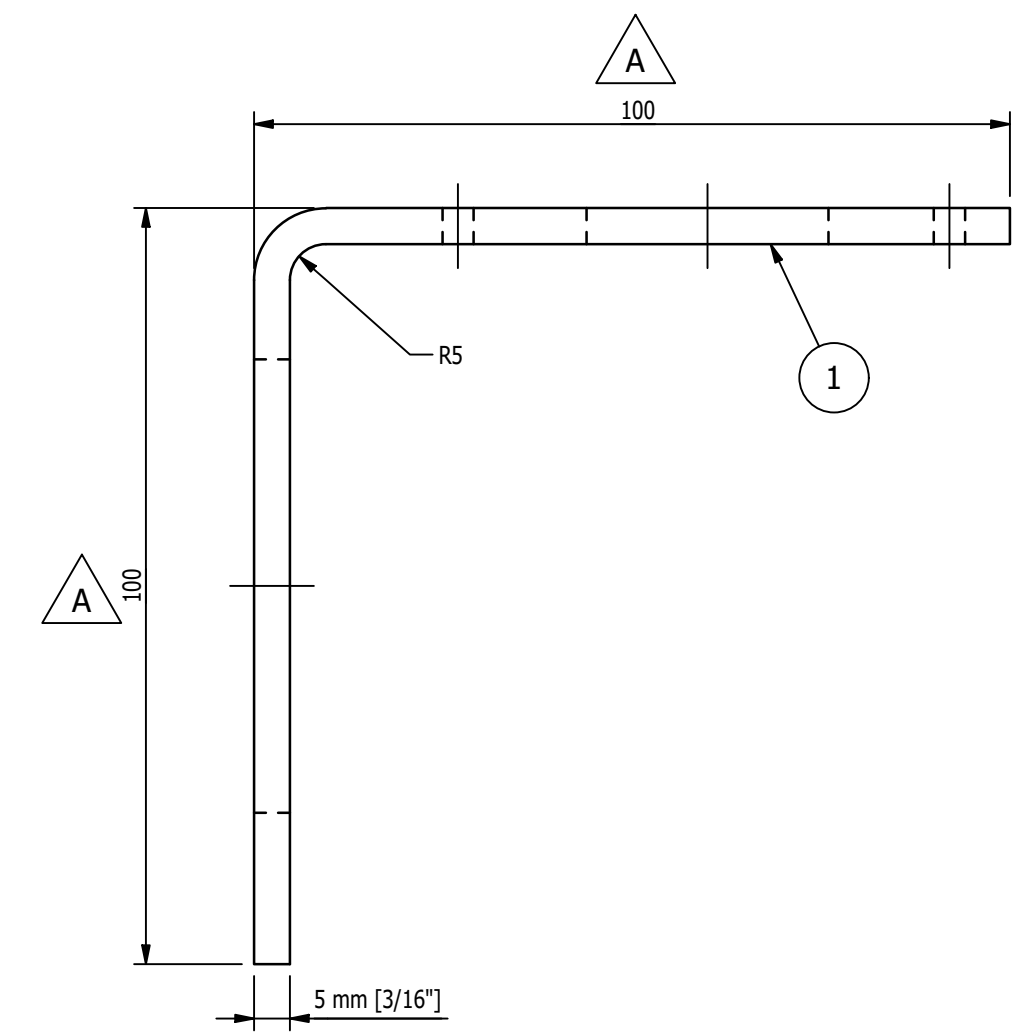


BILL OF MATERIAL					
MARK	QTY	DESCRIPTION	LENGTH	ABM #	REMARKS
		MK-D034A			
1	1	BAR 3/16 x 3 15/16	7 1/2"		
		TOTAL WEIGHT ~ 1.5 LBS			



MK-D034A ~ PROX BRACKET
SCALE 1'-0" = 1'-0"



FLAT PATTERN OF ITEM '1'
SCALE 1'-0" = 1'-0"

PAINT NOTES:
 24 REQ'D ONE SHOP COAT OF PURE ORANGE RAL 2004
 76 REQ'D ONE SHOP COAT OF LIGHT GREY RAL 7035

UNIT 001

- SHOP NOTES:**
1. ALL MATERIAL IS TO BE FREE FROM RUST, SCALE & WELD SLAG
 2. ALL WELDS ARE TO BE CLEAN AND NEAT IN APPEARANCE
 3. REMOVE ALL EXPOSED SHARP EDGES AND BURRS
 4. ALL STEEL TO BE ASTM A-36 UNLESS OTHERWISE SPECIFIED
 5. ALL WELDS TO BE 3/16" / 5mm MINIMUM CONTINUOUS FILLET UNLESS OTHERWISE SPECIFIED.
 6. ALL HARDWARE MUST BE METRIC CLASS 8.8 OR SAE GR 5 AND ZINC PLATED
 7. MARK ASSEMBLIES AND SUB-ASSEMBLIES (WHERE APPLICABLE) WITH MK IDENTIFIERS.
 8. ALL SLOT LENGTHS ARE END TO END U.N.O.

PAINT NOTES:
 PAINT ALL FABRICATED STEEL
 ONE SHOP COAT OF LIGHT GREY RAL 7035
 DO NOT PAINT MACHINED ITEMS, FASTENERS
 OF PURCHASED ITEMS.

16175-1001-126-1-001-0003

REV	BY	DATE	DESCRIPTION	APP
A	MC	7/27/2022	REVISED PAINT NOTES; ADDED DIMENSIONS	
0	MC	7/19/2022	FOR FABRICATION	

MILLER INDUSTRIES 3070 W. THOMPSON RD. FENTON, MI 48430 PH: 810.373.0322 FAX: 810.373.0326 www.millic.com		PROPRIETARY AND CONFIDENTIAL INFORMATION CONTAINED IN THIS DRAWING IS THE SOLE PROPERTY OF MILLER INDUSTRIES. ANY REPRODUCTION IN PART OR AS WHOLE WITHOUT THE WRITTEN PERMISSION OF MILLER INDUSTRIES IS PROHIBITED.
TITLE: P6700 CONVEYORS CAMPUS BUILDING		DRAWN BY: RJB
CLIENT: VOLVO		CHECKED BY: CW
DRAWING No. 1875D034		DWG DATE: 6/15/22
REV: A		JOB No: 22096

MAGNUM CONSULTING
 41100 QuakerRoad Rd.
 Suite 125
 Novi, MI 48275
 Phone: (248) 772-8822
 Fax: (248) 772-8851
 Web: www.mmagnum.com

MAGNUM JOB #: 1875
 MAGNUM DRAWING #: 1875D034 - REV A

UNLESS OTHERWISE NOTED:
 X = ±.060
 XX = ±.030
 XXX = ±.005
 FRACTIONS = ±1/16"
 ANGLES = ±1°30'
 BREAK ALL SHARP EDGES
 DEBURR ALL HOLES
 DO NOT SCALE DRAWING

GENERAL NOTES:

MATERIALS:
 - ALL WIDE FLG. MATERIAL TO BE ASTM A992-GR50 U.N.O.
 - ALL TUBE MATERIAL TO BE ASTM A500, GRADE B U.N.O.
 - ALL PIPE MATERIAL TO BE ASTM A53, GRADE B U.N.O.
 - ALL OTHER MATERIAL TO BE ASTM-A36 U.N.O.

HOLES:
 - ALL HOLES ARE 13/16" DIA. U.N.O.
 - ALL BOLTED CONNECTIONS TO BE 3/4" DIA A325-N (SHEAR BEARING TYPE CONNECTIONS) WITH BOLTS INSTALLED IN SNUG TIGHT CONDITION, UNLESS NOTED.

WELDS:
 - ALL WELDS TO BE "E70XX", (PER AWS D1.1)

PAINT:
 - PAINT PER CUSTOMER SPECIFICATIONS U.N.O.

COPIES:
 - ALL REentrant CUTS TO BE A MIN 1/2" RADIUS U.N.O.