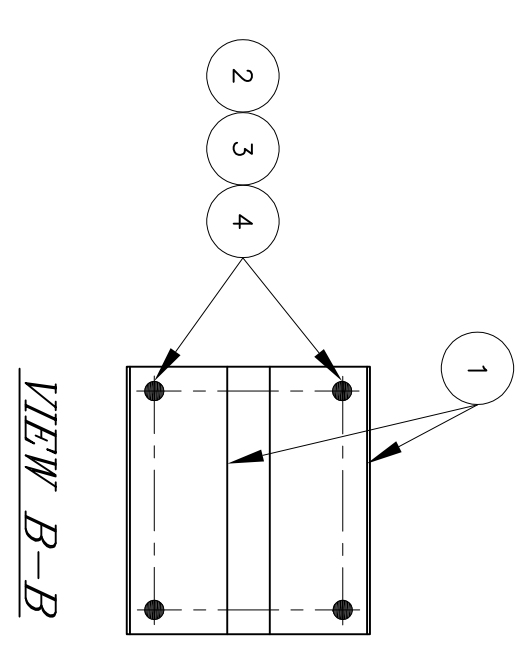
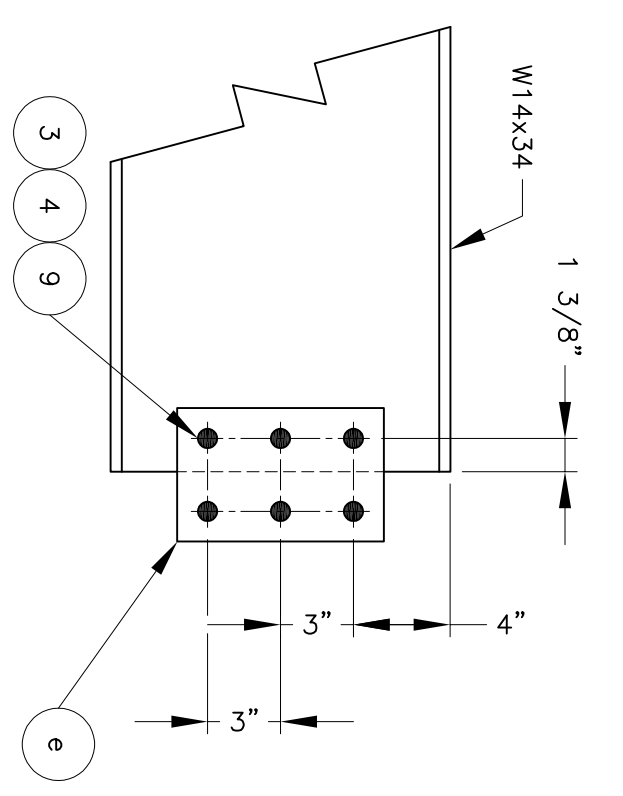


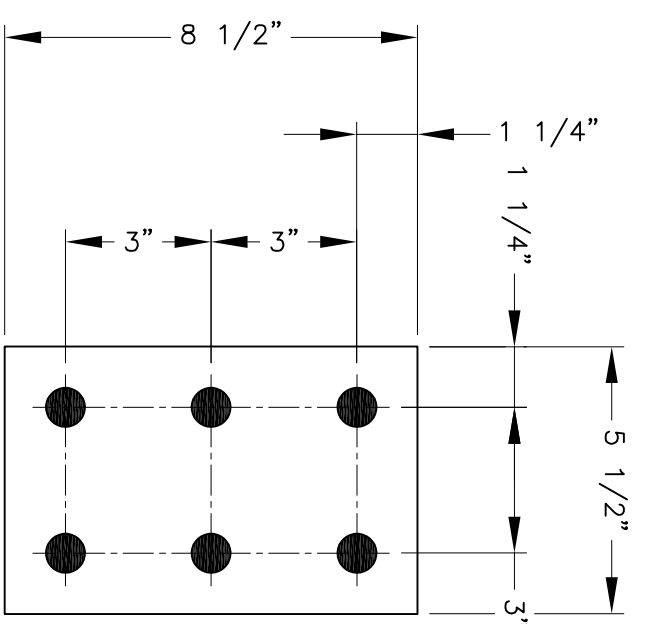
(12) REQ'D COLUMN 71704-D02A



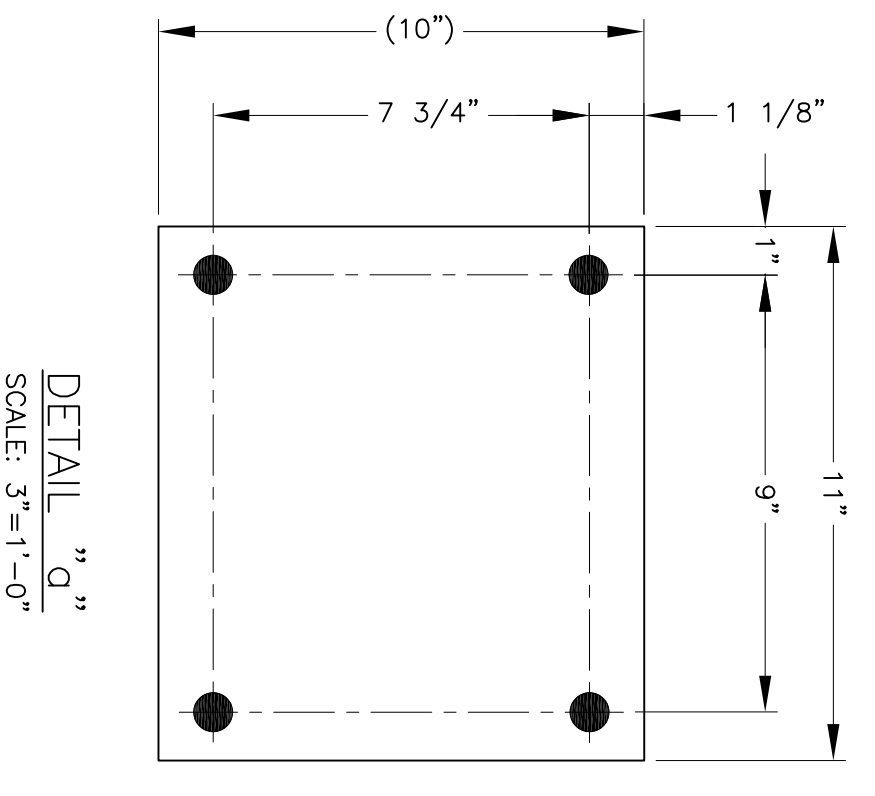
VIEW B-B



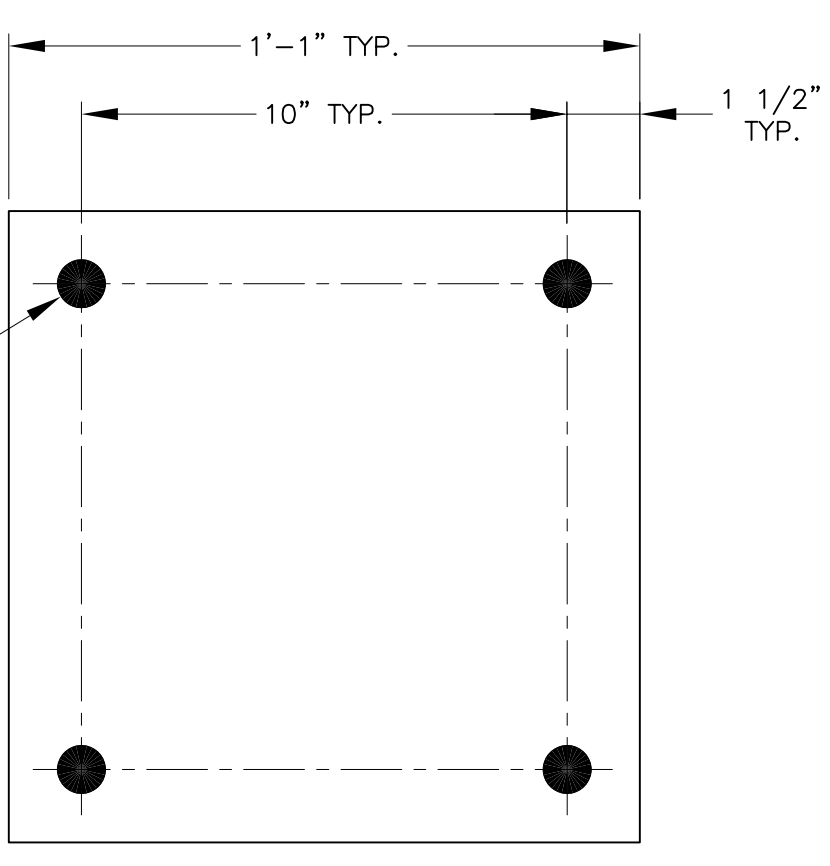
TYP. BEAM SPlice DETAIL
 (4) REQ'D BEAM 71760-D02B
 (4) REQ'D BEAM 71760-D02C



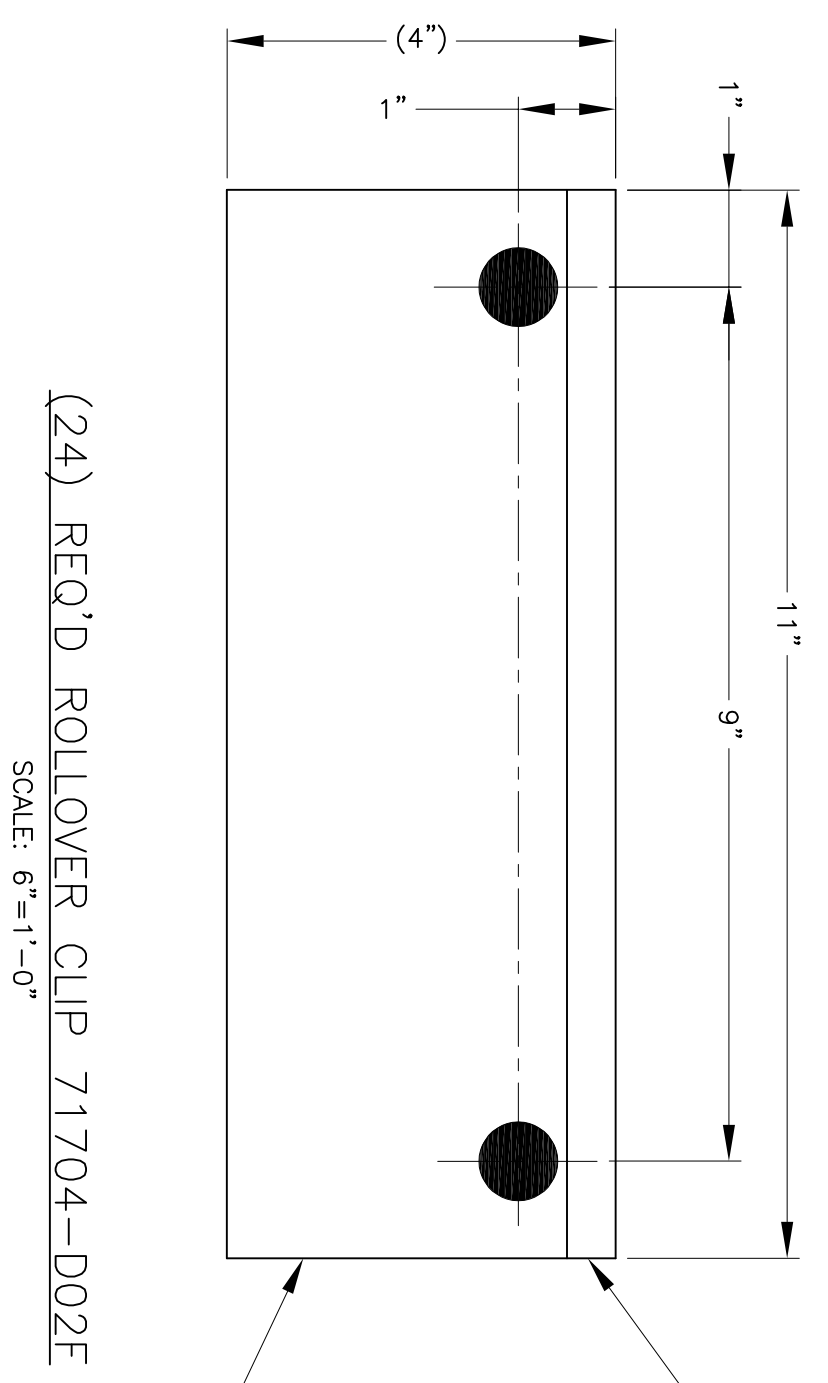
DETAIL "e"
 SCALE: 3"=1'-0"



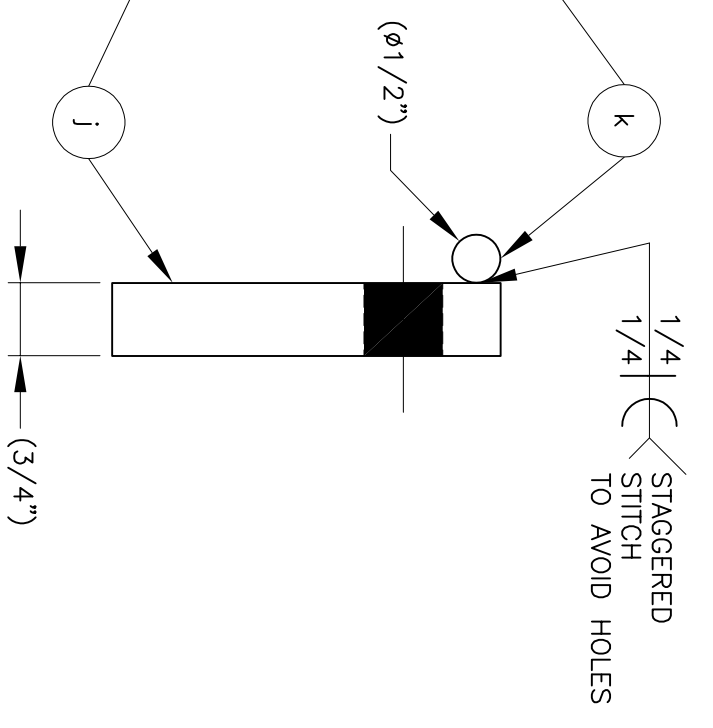
DETAIL "d"
 SCALE: 3"=1'-0"



DETAIL "c"
 SCALE: 3"=1'-0"



(24) REQ'D ROLLover CLIP 71704-D02F
 SCALE: 6"=1'-0"

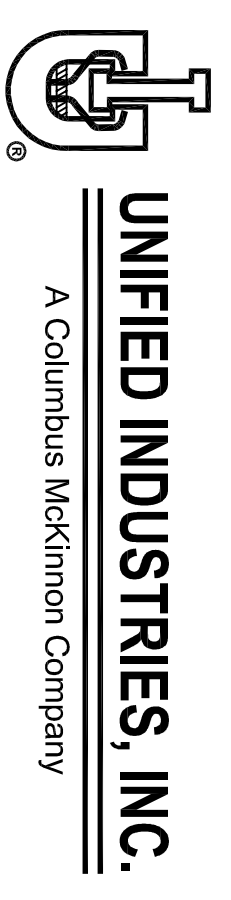


1/4" STAGGERED SITCH TO AVOID HOLES

- SHOP NOTES:
- ALL HOLES $\phi 13/16"$ U.N.O.
 - ALL WEIDS ARE TO BE PERFORMED BY AWS CERTIFIED WELDERS USING A MINIMUM OF 70KSI ELECTRODE.
 - UNIFIED TO PROVIDE HARDWARE.
 - ALL W/ SHAPES TO BE ASTM A992, A36.
 - ALL HSS TUBE TO BE ASTM A500, GB, B.
 - STRUCTURE PAINT COLOR LIGHT GRAY RAL 7035.
 - MARK ALL STEEL, ON TOP OF BEAMS AND ON TOP PLATE OF COLUMNS, MARK ALL PARTS, SAMPLE 71704-D02X.
 - ALL DIMENSIONS IN (XXXX) REFERENCE ONLY.

ITEM	QTY	DESCRIPTION	PART NO.
71704-D02F			
k	1	BAR, $\phi 1/2"$ x 11" STL.	
j	1	BAR, $3/4"$ x 4" x 11" STL.	
71704-D02E			
h	1	W14x43 x 31'-3 1/2" (CUT & PAINT ONLY)	
71704-D02D			
g	1	W14x43 x 21'-6 1/2" (CUT & PAINT ONLY)	
71704-D02C			
9	3	3/4"-10 x 2" A325 HHB	
4	3	3/4"-10 A194 2H PIN LOCK NUT	
3	3	3/4" F436 FLAT WASHER	
f	1	W14x43 x 16'-3 3/8" (PREP FOR SPlice ONE END)	
e	1	PL, 1/4" x 5 1/2" x 8-1/2" STL.	
71704-D02B			
9	3	3/4"-10 x 2" A325 HHB	
4	3	3/4"-10 A194 2H PIN LOCK NUT	
3	3	3/4" F436 FLAT WASHER	
d	1	W14x43 x 44'-11 3/8" (PREP FOR SPlice ONE END)	
71704-D02A			
7	4	3/4"-10 GR-5 HEX JAM NUT	
4	3	3/4"-10 x 3" GR-5 FULL THREAD HHB	81081
6	1	6" COLUMN BASE PLATE	
5	2	GUSSET FOR 6" x 6" COLUMN	79590
3	4	3/4"-10 A194 2H PIN LOCK NUT	
4	4	3/4" F436 FLAT WASHER	
2	4	3/4"-10 x 3" A325 HHB	
1	2	ROLLover CLIP 71704-D02F	
c	1	PL, 3/8" x 1'-1" x 1'-1" STL.	
b	1	HSS 6 x 6 x 1/4 x 15'-4 5/8"	
a	1	PL, 1/2" x 10" x 11" STL.	

UNLESS OTHERWISE NOTED:
 X = ±0.030 FRACTIONS = ±1/16"
 .XX = ±0.010 ANGLES = ±1°/30"
 .XXX = 1.005
 *BREAK ALL SHARP EDGES WITH COR MAXIMUM
 DO NOT SCALE DRAWING



RHINO ASSEMBLY CORPORATION/VOLVO
 LH & RH DOOR LOAD & LID GEO
 S1 & S2 FREE STAND DETAILS

REV	DATE	BY	DESCRIPTION
INITIAL	12/28/23	SMK	DRAWING RELEASE

DATE	DATE	DATE
12/28/2023	12/28/2023	12/28/2023

APPROVALS	DATE
<i>SMK</i>	12/28/2023
<i>SMK</i>	12/28/2023

DRWN	CHECKED	ENGR	PLT DATE	SHOP ORDER#	SCALE	DWG NO.	PART. NO.	REF. FREE	SHEET	OF
<i>SMK</i>	<i>SMK</i>	<i>SMK</i>	12/28/2023	71704	1/4"=1'-0"	71704D01.DWG			4	5

NOTICE TO PERSONS RECEIVING THIS DRAWING AND/OR TECHNICAL INFORMATION:
 Unified Industries Inc. claims proprietary rights in the material disclosed herein.
 This drawing and/or technical information is loaned for mutual assistance and is subject to recall by Unified Industries at any time. This drawing and/or technical information is the property of Unified Industries.
 without direct permission from Unified Industries.