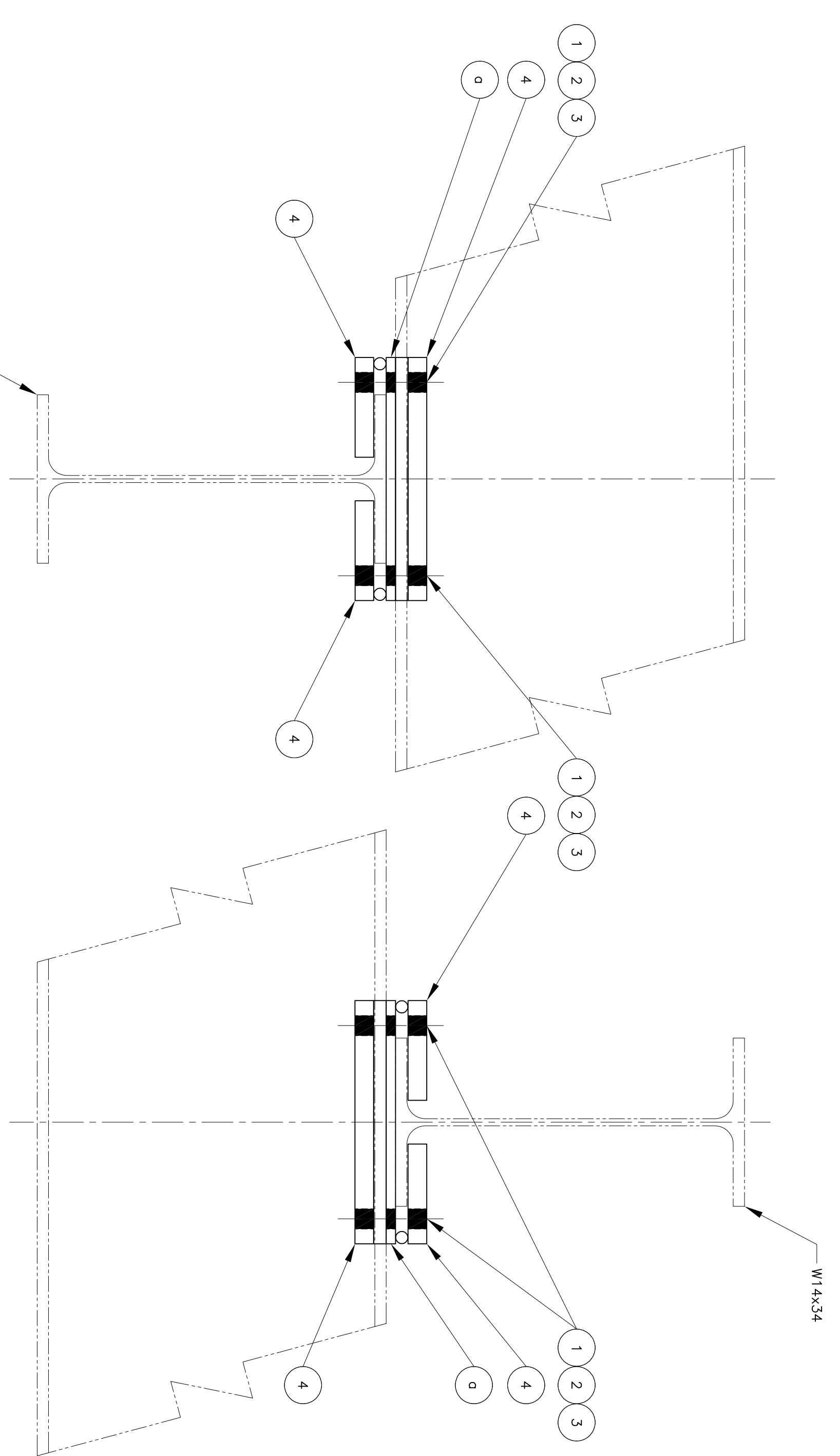
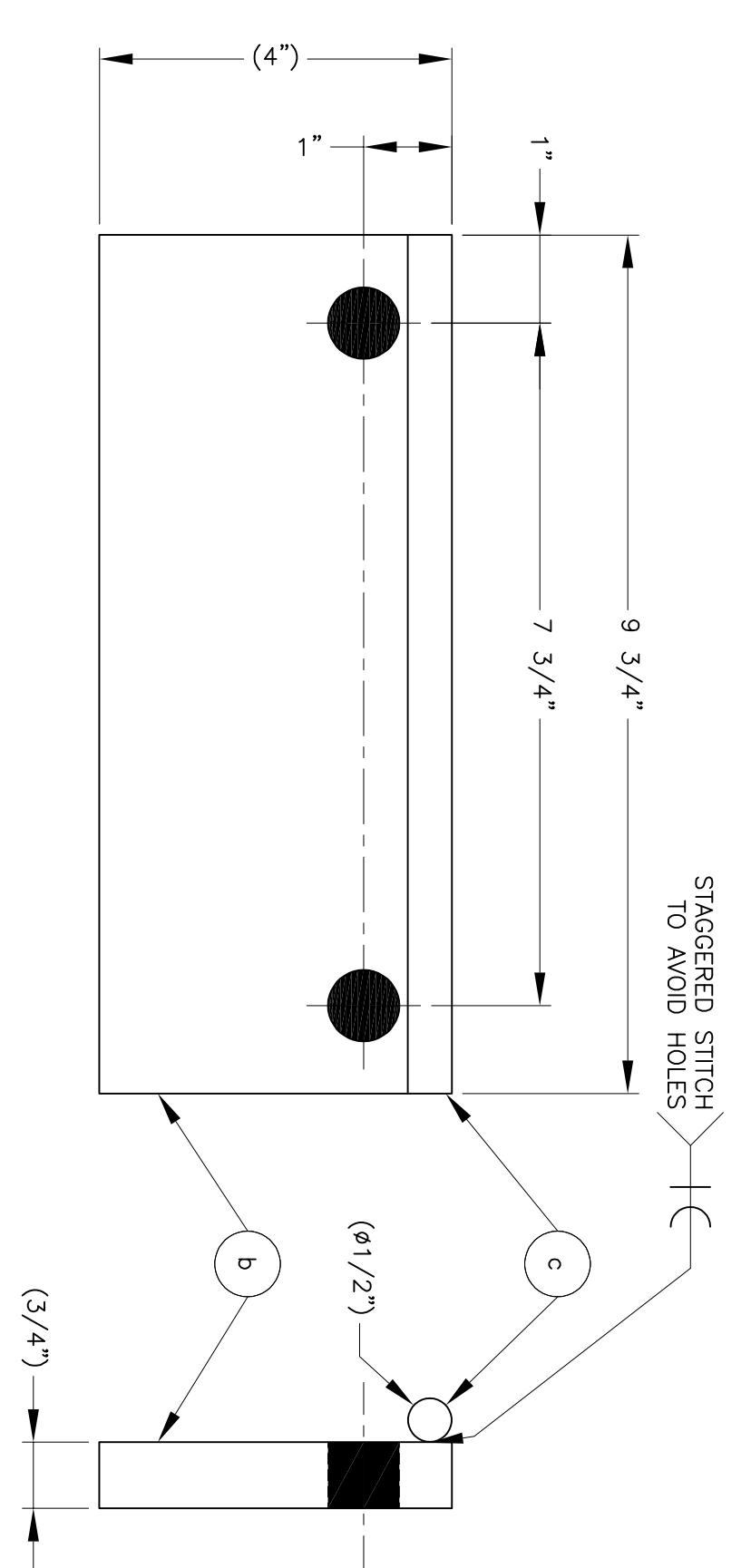


REV	DESCRIPTION	DATE	BY
-	INITIAL DRAWING RELEASE	1/22/24	SMK

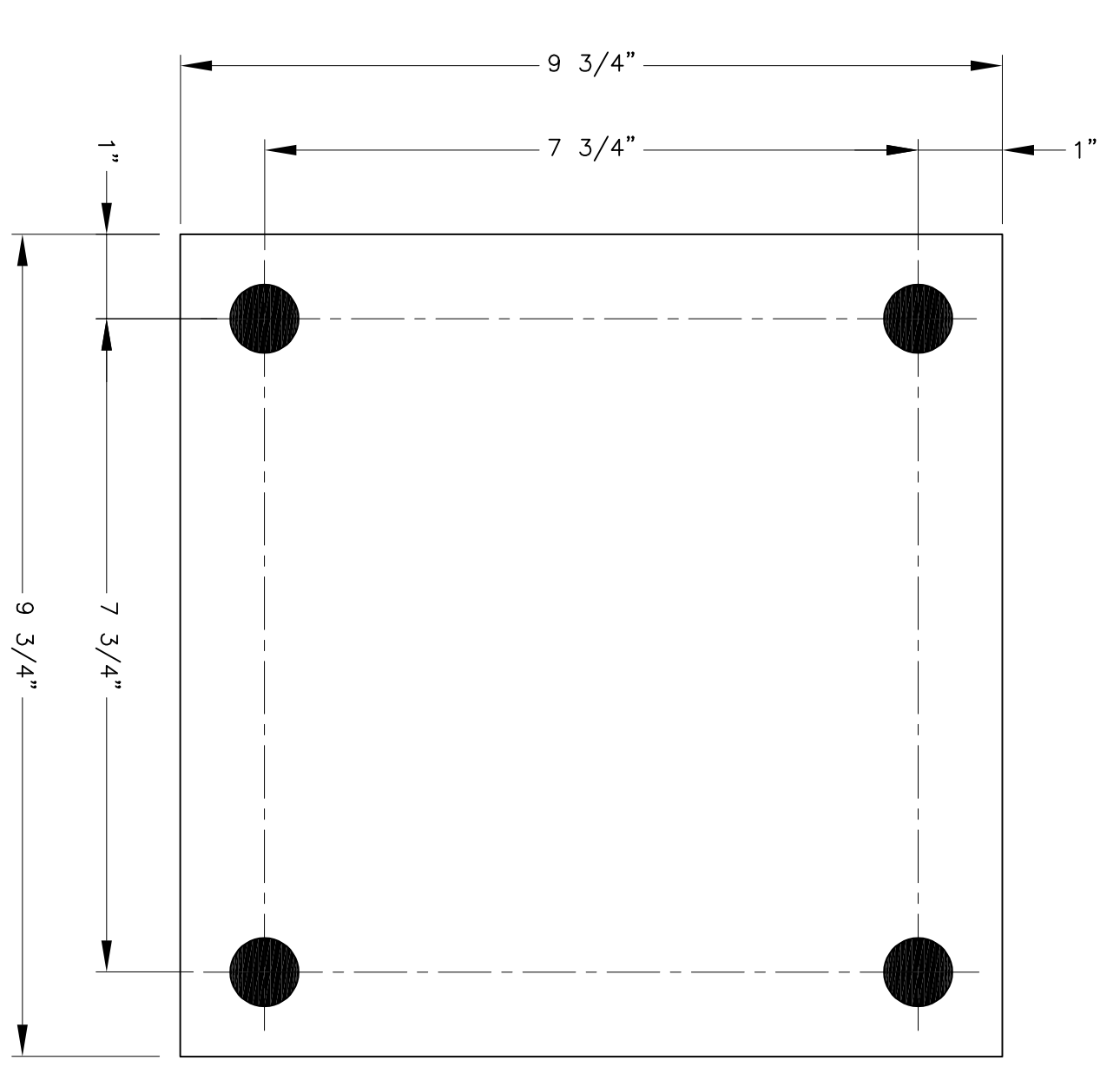
DATE PLOTTED: 1/17/24 ~ Rhino Assembly - Mount-(2) Free Stands (RS) (RHINER 71704D03) DWG SHEET 5 OF 5



(12) REQ'D BEAM CLAMP 71704-D03A



(48) REQ'D ROLLER CLIP 71704-D03B  
SCALE: 6=1"-0"



DETAIL "a"

- SHOP NOTES:
1. ALL HOLES ARE #13/16" U.N.O.
  2. FABRICATOR TO PROVIDE HARDWARE.
  3. ASSEMBLE BEAM CLAMPS WITH HARDWARE HAND TIGHT.
  4. ALL DIMENSIONS ARE TO FACE UNLESS NOTED OTHERWISE.
  5. ALL WELDS ARE TO BE PERFORMED BY AWS CERTIFIED WELDERS USING A MINIMUM OF 70KSI ELECTRODE.
  6. PAINT LIGHT GRAY RAL 7035.
  7. ALL DIMENSIONS IN (XXXX) REFERENCE ONLY.

ITEM	QTY	DESCRIPTION	PART NO.
1	1	BAR, #1/2" x 9 3/4" STL	71704-D03B
2	1	BAR, 3/4 x 4" x 9 3/4" STL	(48) REQ'D
3	4	ROLLER CLIP 71704-D03B	71704-D03A
4	4	3/4-10 A194 2H FIN LOCK NUT	(12) REQ'D
5	4	3/4" F436 FLAT WASHER	
6	1	3/4-10 x 4 1/4" A325 HHB	
7	1	PL, 3/8 x 9 3/4 x 9 3/4" STL	

UNLESS OTHERWISE NOTED:  
 X = ±.030 FRACTIONS = ±1/16"  
 XX = ±.010 ANGLES = ±1°/30"  
 .XXX = 1.005  
 \*BREAK ALL SHARP EDGES WITH COR MAXIMUM  
 DO NOT SCALE DRAWING

**UNIFIED INDUSTRIES, INC.**  
 A Columbus McKinnon Company

RHINO ASSEMBLY/WALANT  
 W14x34/W14x34 PERPENDICULAR  
 S1 & S2 BEAM CLAMPS

APPROVALS	DATE
<i>JALC</i>	1/22/2024
<i>JSP</i>	1/22/2024
<i>JALC</i>	1/22/2024

SIZE D DWG NO: 71704D03.DWG  
 SCALE: 3"=1'-0" PART. NO. REF. FREE SHEET 5 OF 5

NOTICE TO PERSONS RECEIVING THIS DRAWING: THIS DRAWING AND/OR TECHNICAL INFORMATION IS ISSUED IN CONFIDENCE FOR MUTUAL ASSISTANCE AND IS LOANED FOR YOUR USE ONLY. THIS DRAWING AND/OR TECHNICAL INFORMATION IS THE PROPERTY OF UNIFIED INDUSTRIES, INC. AND IS NOT TO BE REPRODUCED OR TRANSMITTED IN ANY FORM OR BY ANY MEANS, ELECTRONIC OR MECHANICAL, INCLUDING PHOTOCOPYING, RECORDING, OR BY ANY INFORMATION STORAGE AND RETRIEVAL SYSTEM, WITHOUT THE WRITTEN PERMISSION OF UNIFIED INDUSTRIES, INC. CLAIMS PROPRIETARY RIGHTS IN THE MATERIAL DESCRIBED HEREIN.