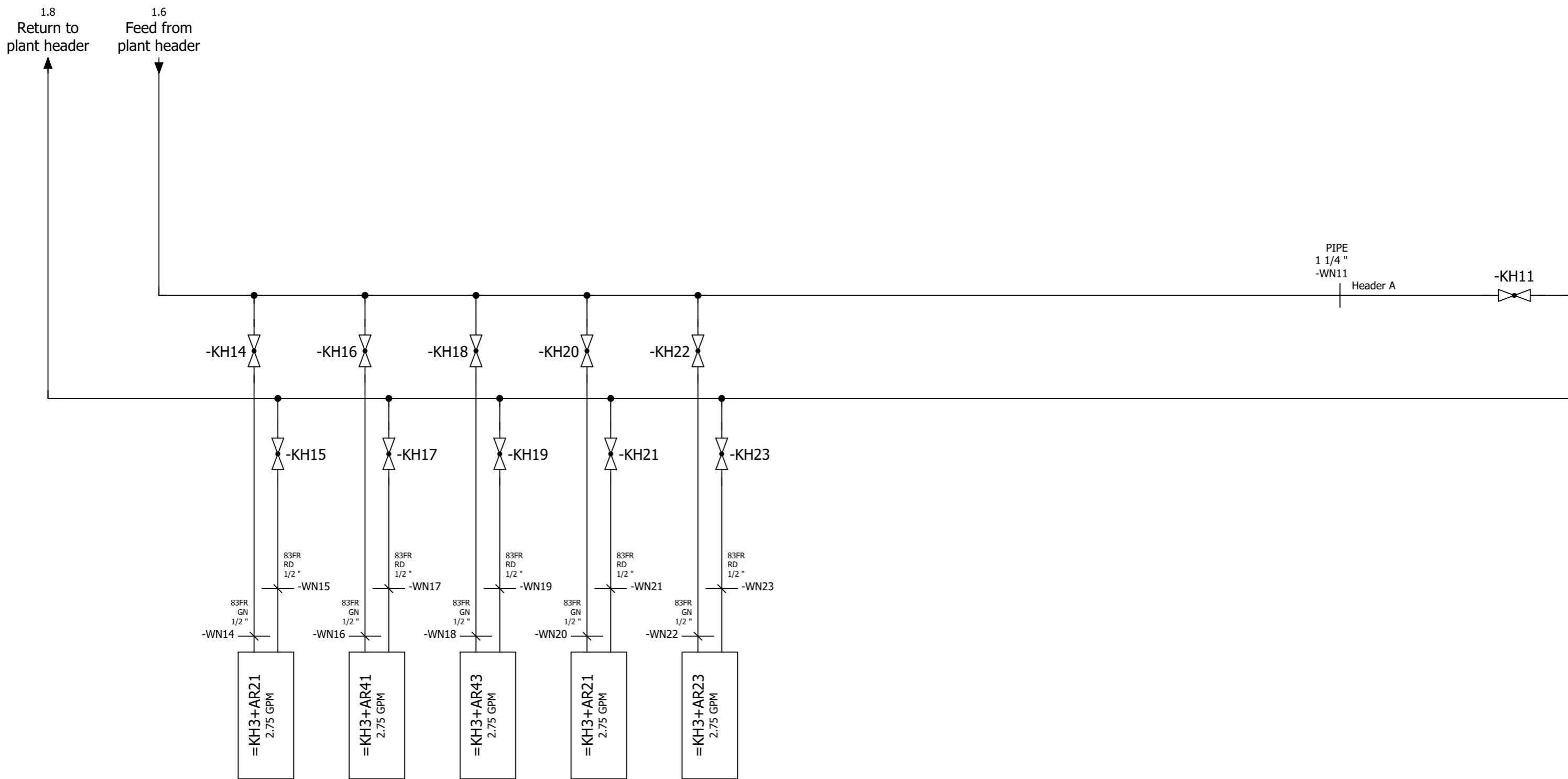


Date		12/15/2022		Volvo Trucks North America		Valiant TMS		Incoming water supply		Drawing name:		= KH3	
Ed.		MKLEPADLO		P6700 Framing - Cell 2V01, KF1		Scale 1:1				=2V01&MFS-WATER_KF1		+ KH3	
Appr.				Replacement of		Replaced by				Document type:		Project nr:	
Modification		Date		Name		Original				MFS		22-16152	
											Page	1	
												8	



Date	12/15/2022	Volvo Trucks North America	Valiant TMS	Water distribution Header A	Drawing name:	= KH3	
Ed.	MKLEPADLO	P6700 Framing - Cell 2V01, KF1	Scale 1:1		=2V01&MFS-WATER_KF1	+ KH3	
Appr					Document type:	Project nr:	Page
Modification	Date	Name	Original	Replacement of	MFS	22-16152	8



# Parts list

F01\_001

Device tag	Quantity	Designation	Type number	Supplier	Part number
=KH3-A1	1	1/4" Pressure gauge, 0~100PSI 2-1/2" dial w/ABS case	25.110.100	NOSHOK	25.110.100
=KH3-A2	1	1/4" Pressure gauge, 0~100PSI 2-1/2" dial w/ABS case	25.110.100	NOSHOK	25.110.100
=KH3-A3	1	1/4" Pressure gauge, 0~100PSI 2-1/2" dial w/ABS case	25.110.100	NOSHOK	25.110.100
=KH3-BF1	1	Water differential pressure switch w/gage, 1/4 pt	DP-F-KIT	OMNI CONTROLS	DP-F-KIT
=KH3-BF2	1	Water flow switch, 1/2" NPT, PNP N.O., M12, Immersion Sensor	FCS-N1/2A4-AP8X-H1141	TURCK	TUR.FCS-N1/2A4-AP8X-H1141
=KH3-FL1	1	2" CHECK VALVE, IN LINE	61-108-01	CONBRACO	61-108-01
=KH3-HQ1	1	2" Water bag filter; NPT size 2, 200 GPM max flow	20403-001-2"	OMNI CONTROLS	20403-001-2"
=KH3-KH1	1	1-1/2" BALL VALVE, 2PC FULL PORT BRONZE W/LOCK - NPT	77-107-46	APOLLO	77-107-46
=KH3-KH1	1	1-1/2" ~ 2" BALL VALVE HANDLE COVER, RED	W-8374-RED	CONBRACO	W-8374-RED
=KH3-KH2	1	2" BALL VALVE, 2PC FULL PORT BRONZE W/LOCK - NPT	77-108-46	APOLLO	77-108-46
=KH3-KH2	1	1-1/2" ~ 2" BALL VALVE HANDLE COVER, GREEN	W-8374-GREEN	CONBRACO	W-8374-GREEN
=KH3-KH3	1	1/4" BALL VALVE, 2PC FULL PORT BRONZE - NPT	77-101-01	APOLLO	77-101-01
=KH3-KH3	1	1/4"~1/2" BALL VALVE HANDLE COVER, GREEN	W-8368-GREEN	CONBRACO	W-8368-GREEN
=KH3-KH4	1	1/4" BALL VALVE, 2PC FULL PORT BRONZE - NPT	77-101-01	APOLLO	77-101-01
=KH3-KH4	1	1/4"~1/2" BALL VALVE HANDLE COVER, GREEN	W-8368-GREEN	CONBRACO	W-8368-GREEN
=KH3-KH5	1	1/4" BALL VALVE, 2PC FULL PORT BRONZE - NPT	77-101-01	APOLLO	77-101-01
=KH3-KH5	1	1/4"~1/2" BALL VALVE HANDLE COVER, GREEN	W-8368-GREEN	CONBRACO	W-8368-GREEN
=KH3-KH6	1	2" BALL VALVE, 2PC FULL PORT BRONZE W/LOCK - NPT	77-108-46	APOLLO	77-108-46
=KH3-KH6	1	1-1/2" ~ 2" BALL VALVE HANDLE COVER, GREEN	W-8374-GREEN	CONBRACO	W-8374-GREEN
=KH3-KH7	1	2" BALL VALVE, 2PC FULL PORT BRONZE W/LOCK - NPT	77-108-46	APOLLO	77-108-46
=KH3-KH7	1	1-1/2" ~ 2" BALL VALVE HANDLE COVER, GREEN	W-8374-GREEN	CONBRACO	W-8374-GREEN
=KH3-KH8	1	1/4" BALL VALVE, 2PC FULL PORT BRONZE - NPT	77-101-01	APOLLO	77-101-01
=KH3-KH8	1	1/4"~1/2" BALL VALVE HANDLE COVER, GREEN	W-8368-GREEN	CONBRACO	W-8368-GREEN
=KH3-KH9	1	2" BALL VALVE, 2PC FULL PORT BRONZE W/LOCK - NPT	77-108-46	APOLLO	77-108-46
=KH3-KH9	1	1-1/2" ~ 2" BALL VALVE HANDLE COVER, GREEN	W-8374-GREEN	CONBRACO	W-8374-GREEN
=KH3-KH11	1	1-1/4" BALL VALVE, 2PC FULL PORT BRONZE W/LOCK - NPT	77-106-46	APOLLO	77-106-46
=KH3-KH11	1	1" ~ 1-1/4" BALL VALVE HANDLE COVER, GREEN	W-8372-GREEN	CONBRACO	W-8372-GREEN
=KH3-KH14	1	1/2" BALL VALVE, 2PC FULL PORT BRONZE W/LOCK - NPT	77-103-46	APOLLO	77-103-46
=KH3-KH14	1	1/4"~1/2" BALL VALVE HANDLE COVER, GREEN	W-8368-GREEN	CONBRACO	W-8368-GREEN
=KH3-KH15	1	1/2" BALL VALVE, 2PC FULL PORT BRONZE W/LOCK - NPT	77-103-46	APOLLO	77-103-46
=KH3-KH15	1	1/4"~1/2" BALL VALVE HANDLE COVER, GREEN	W-8368-GREEN	CONBRACO	W-8368-GREEN
=KH3-KH16	1	1/2" BALL VALVE, 2PC FULL PORT BRONZE W/LOCK - NPT	77-103-46	APOLLO	77-103-46
=KH3-KH16	1	1/4"~1/2" BALL VALVE HANDLE COVER, GREEN	W-8368-GREEN	CONBRACO	W-8368-GREEN
=KH3-KH17	1	1/2" BALL VALVE, 2PC FULL PORT BRONZE W/LOCK - NPT	77-103-46	APOLLO	77-103-46
=KH3-KH17	1	1/4"~1/2" BALL VALVE HANDLE COVER, GREEN	W-8368-GREEN	CONBRACO	W-8368-GREEN
=KH3-KH18	1	1/2" BALL VALVE, 2PC FULL PORT BRONZE W/LOCK - NPT	77-103-46	APOLLO	77-103-46
=KH3-KH18	1	1/4"~1/2" BALL VALVE HANDLE COVER, GREEN	W-8368-GREEN	CONBRACO	W-8368-GREEN
=KH3-KH19	1	1/2" BALL VALVE, 2PC FULL PORT BRONZE W/LOCK - NPT	77-103-46	APOLLO	77-103-46
=KH3-KH19	1	1/4"~1/2" BALL VALVE HANDLE COVER, GREEN	W-8368-GREEN	CONBRACO	W-8368-GREEN
=KH3-KH20	1	1/2" BALL VALVE, 2PC FULL PORT BRONZE W/LOCK - NPT	77-103-46	APOLLO	77-103-46
=KH3-KH20	1	1/4"~1/2" BALL VALVE HANDLE COVER, GREEN	W-8368-GREEN	CONBRACO	W-8368-GREEN
=KH3-KH21	1	1/2" BALL VALVE, 2PC FULL PORT BRONZE W/LOCK - NPT	77-103-46	APOLLO	77-103-46
=KH3-KH21	1	1/4"~1/2" BALL VALVE HANDLE COVER, GREEN	W-8368-GREEN	CONBRACO	W-8368-GREEN
=KH3-KH22	1	1/2" BALL VALVE, 2PC FULL PORT BRONZE W/LOCK - NPT	77-103-46	APOLLO	77-103-46
=KH3-KH22	1	1/4"~1/2" BALL VALVE HANDLE COVER, GREEN	W-8368-GREEN	CONBRACO	W-8368-GREEN
=KH3-KH23	1	1/2" BALL VALVE, 2PC FULL PORT BRONZE W/LOCK - NPT	77-103-46	APOLLO	77-103-46
=KH3-KH23	1	1/4"~1/2" BALL VALVE HANDLE COVER, GREEN	W-8368-GREEN	CONBRACO	W-8368-GREEN
=KH3-KH31	1	1-1/4" BALL VALVE, 2PC FULL PORT BRONZE W/LOCK - NPT	77-106-46	APOLLO	77-106-46
=KH3-KH31	1	1" ~ 1-1/4" BALL VALVE HANDLE COVER, GREEN	W-8372-GREEN	CONBRACO	W-8372-GREEN
=KH3-KH34	1	1/2" BALL VALVE, 2PC FULL PORT BRONZE W/LOCK - NPT	77-103-46	APOLLO	77-103-46
=KH3-KH34	1	1/4"~1/2" BALL VALVE HANDLE COVER, GREEN	W-8368-GREEN	CONBRACO	W-8368-GREEN
=KH3-KH35	1	1/2" BALL VALVE, 2PC FULL PORT BRONZE W/LOCK - NPT	77-103-46	APOLLO	77-103-46
=KH3-KH35	1	1/4"~1/2" BALL VALVE HANDLE COVER, GREEN	W-8368-GREEN	CONBRACO	W-8368-GREEN
=KH3-KH36	1	1/2" BALL VALVE, 2PC FULL PORT BRONZE W/LOCK - NPT	77-103-46	APOLLO	77-103-46
=KH3-KH36	1	1/4"~1/2" BALL VALVE HANDLE COVER, GREEN	W-8368-GREEN	CONBRACO	W-8368-GREEN
=KH3-KH37	1	1/2" BALL VALVE, 2PC FULL PORT BRONZE W/LOCK - NPT	77-103-46	APOLLO	77-103-46

&MFS=KH3/3

2

Date	12/15/2022	Volvo Trucks North America	Valiant TMS	Parts list : 25.110.100 - 77-103-46	Drawing name:	=	
Ed.	MKLEPADLO	P6700 Framing - Cell 2V01, KF1	Scale 1:1		=2V01&MFS-WATER_KF1	+ KH3	
Appr					Document type:	Project nr:	Page
Modification	Date	Name	Original	Replaced by	MPB	22-16152	8



